

目 次

1. 概況	1
2. 観測状況一覧	2
3. 地下水位・沈下量・降水量グラフ（4丁目）	3
地下水位・沈下量・降水量グラフ（6丁目）	4
地下水位・沈下量・降水量グラフ（7・12丁目）	5
地下水位・沈下量・降水量グラフ（8丁目）	6
地下水位・沈下量・降水量グラフ（10丁目）	7
地下水位・沈下量・降水量グラフ（11丁目）	8
地下水位・沈下量・降水量グラフ（12丁目）	9
地下水位・降水量グラフ（対象範囲外）	10
4. 地下水位・沈下量データ（4丁目）	11
地下水位・沈下量データ（6丁目）	15
地下水位・沈下量データ（7・12丁目）	19
地下水位・沈下量データ（8丁目）	23
地下水位・沈下量データ（10丁目）	27
地下水位・沈下量データ（11丁目）	31
地下水位・沈下量データ（12丁目）	35
地下水位データ（対象範囲外）	40

[概況]

[測定日] 2020年2月7日

[概況]

水位につきましては、すべての地点で、液状化に対して所定の安全性が確保された状態まで水位が低下しております。沈下に対しては第17回委員会において設定された一次管理値沈下量4cm以下の状態であり、問題はありません。

引き続き、水位状況、沈下状況を監視してまいります。第19回委員会において4丁目・6丁目・8丁目の沈下収束傾向の確認および地区外への影響がないことの確認がなされたことから、4丁目・6丁目・8丁目・地区外は計測C、D、Eに移行いたします。

※地下水位の測定値はGL表示値とT.P.表示値があります（表示単位：m）。

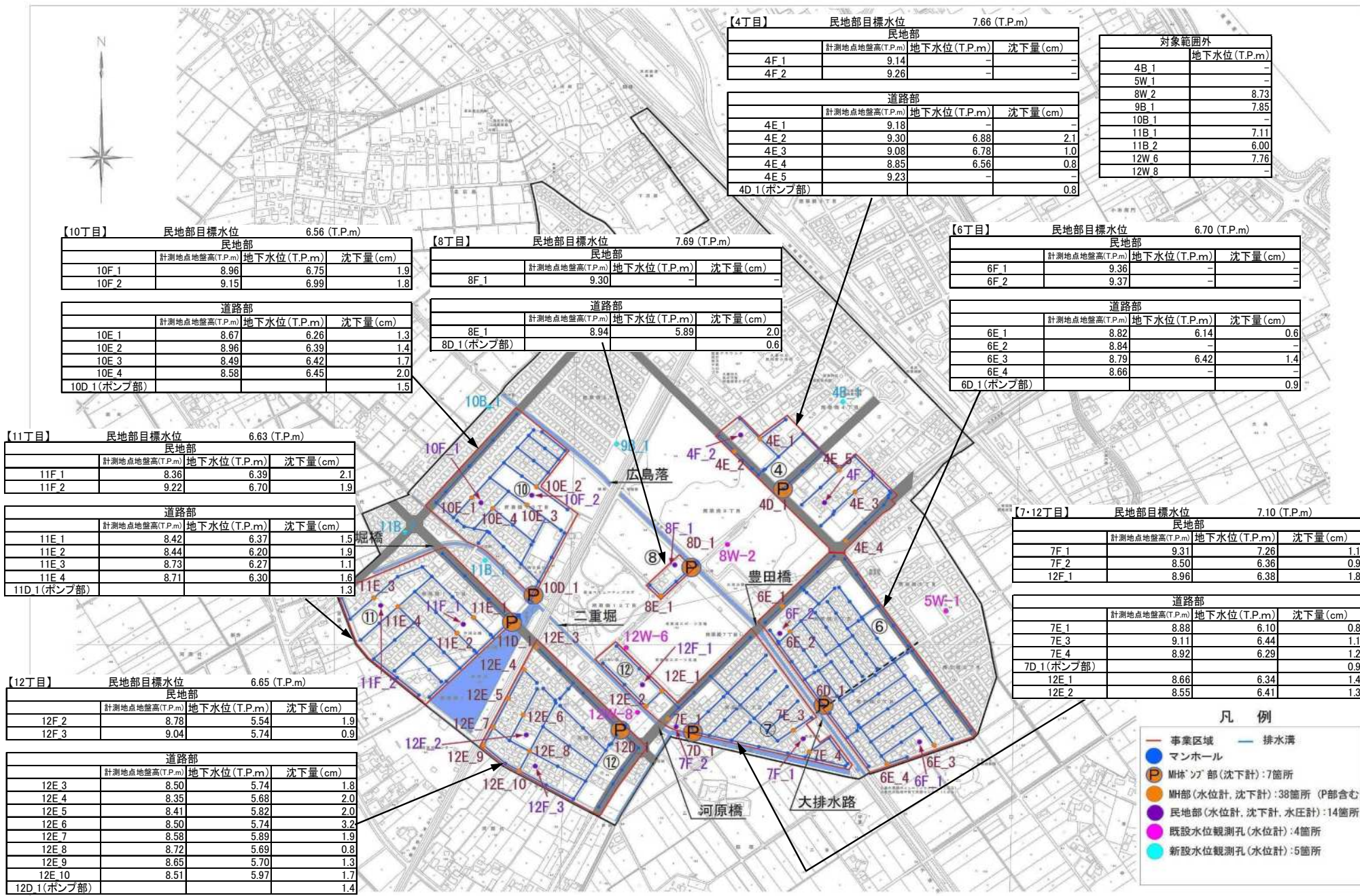
- GLとはGround Level（地盤面）の略です。GL-1.00mは、地盤面から1m下がった高さを表します。
- T.P.とはTokyo Peil（東京湾平均海面）の略です。東京湾の平均海面を0mとした時の高さを表し、測量法にて定めている高さの基準になります。

※降水量データは、気象庁（久喜）観測データを示す。

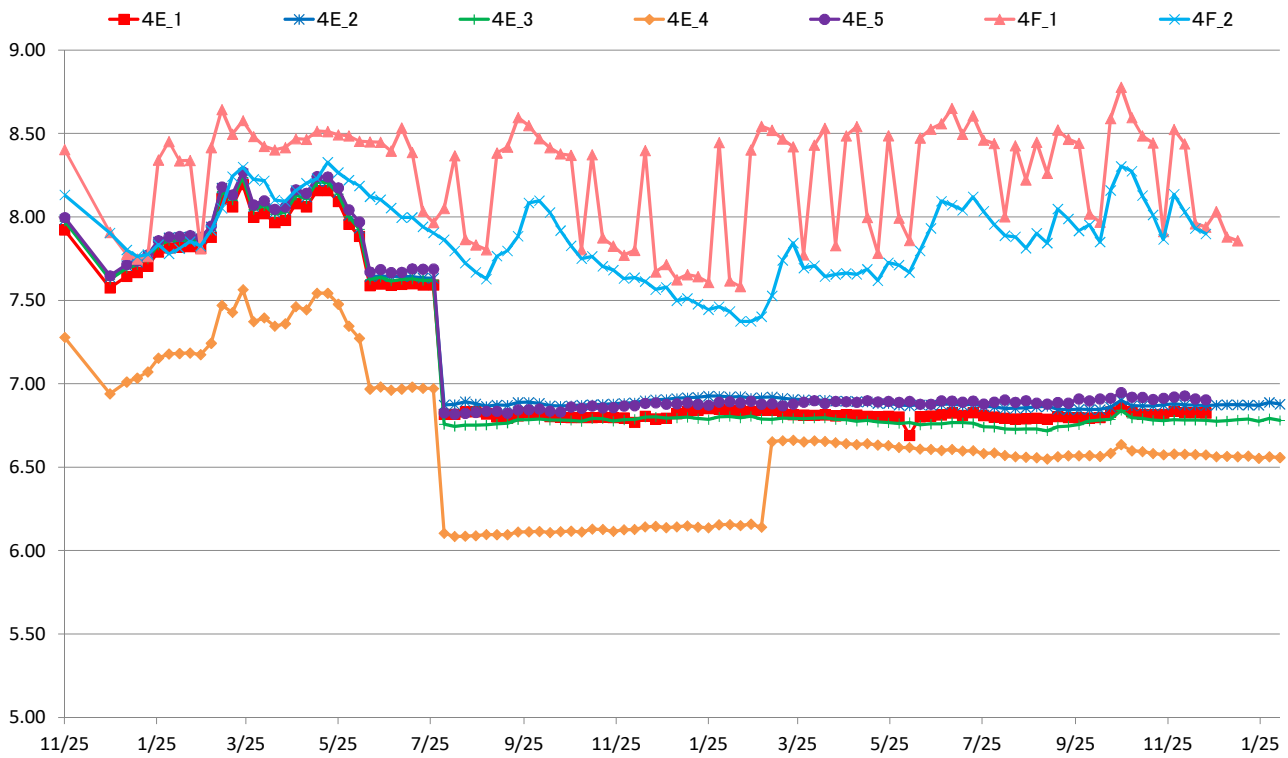
- 計測A（常時測定 沈下：自動観測、水位：自動観測 データは通信管理）
- 計測B（1回測定/1か月 沈下：地表面水準測量、水位：ロープ式水位計）
- 計測C（1回測定/3か月 沈下：地表面水準測量、水位：ロープ式水位計）
- 計測D（1回測定/6か月 沈下：地表面水準測量、水位：ロープ式水位計）
- 計測E（常時測定 沈下：自動観測、水位：自動観測 データは現地で回収 頻度は計測B,C,Dに合わせる）

※自動観測終了地点

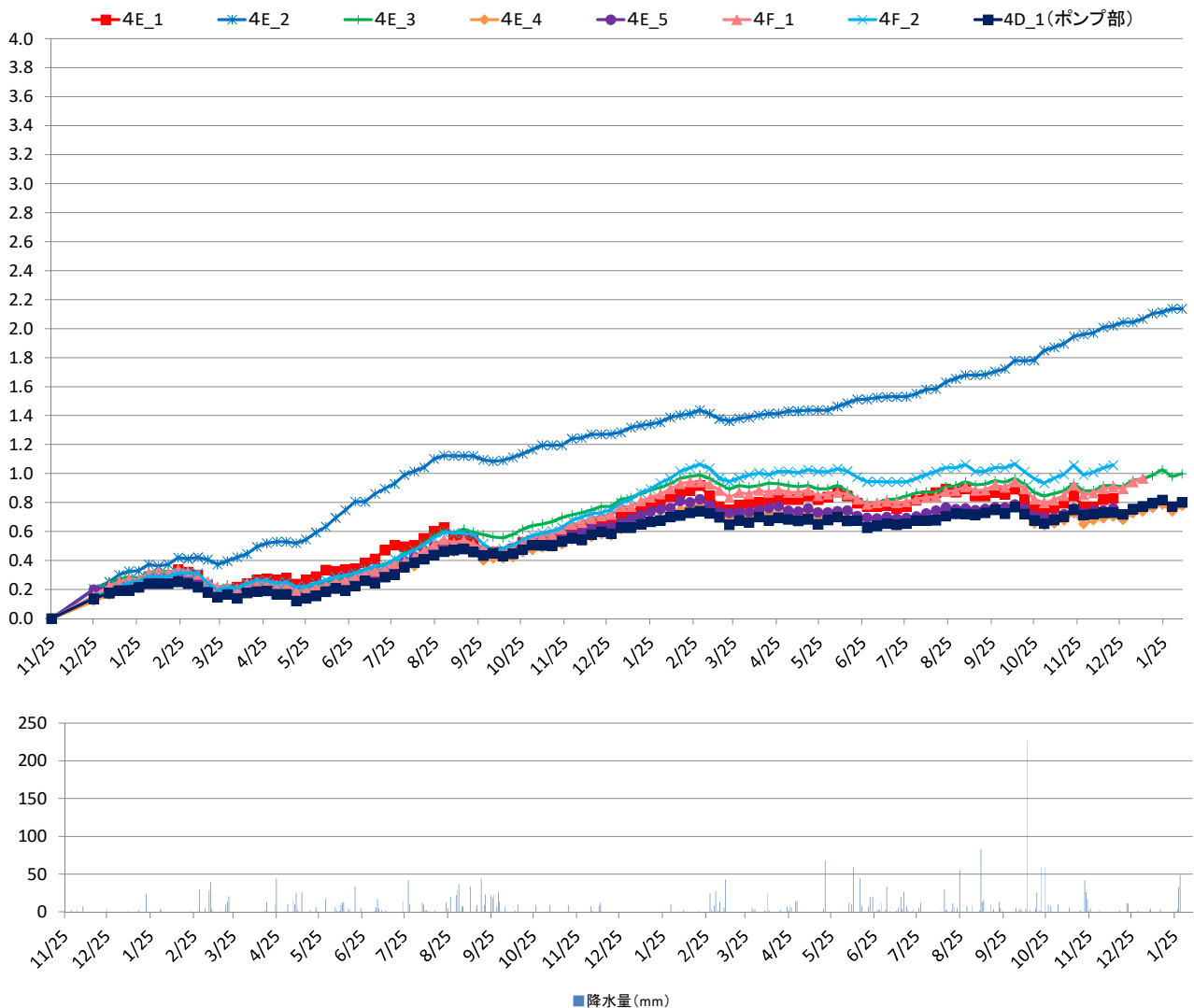
- 4丁目 4F_1：1/12、4F_2：12/23、4E_1：12/25、4E_5：12/24
- 6丁目 6E_2：12/21、6E_4：1/9、6F_1：12/26、6F_2：12/27
- 8丁目 8F_1：12/21
- 地区外 4B_1：12/26、5W_1：11/18、10B_1：2/6、12W_8：11/26



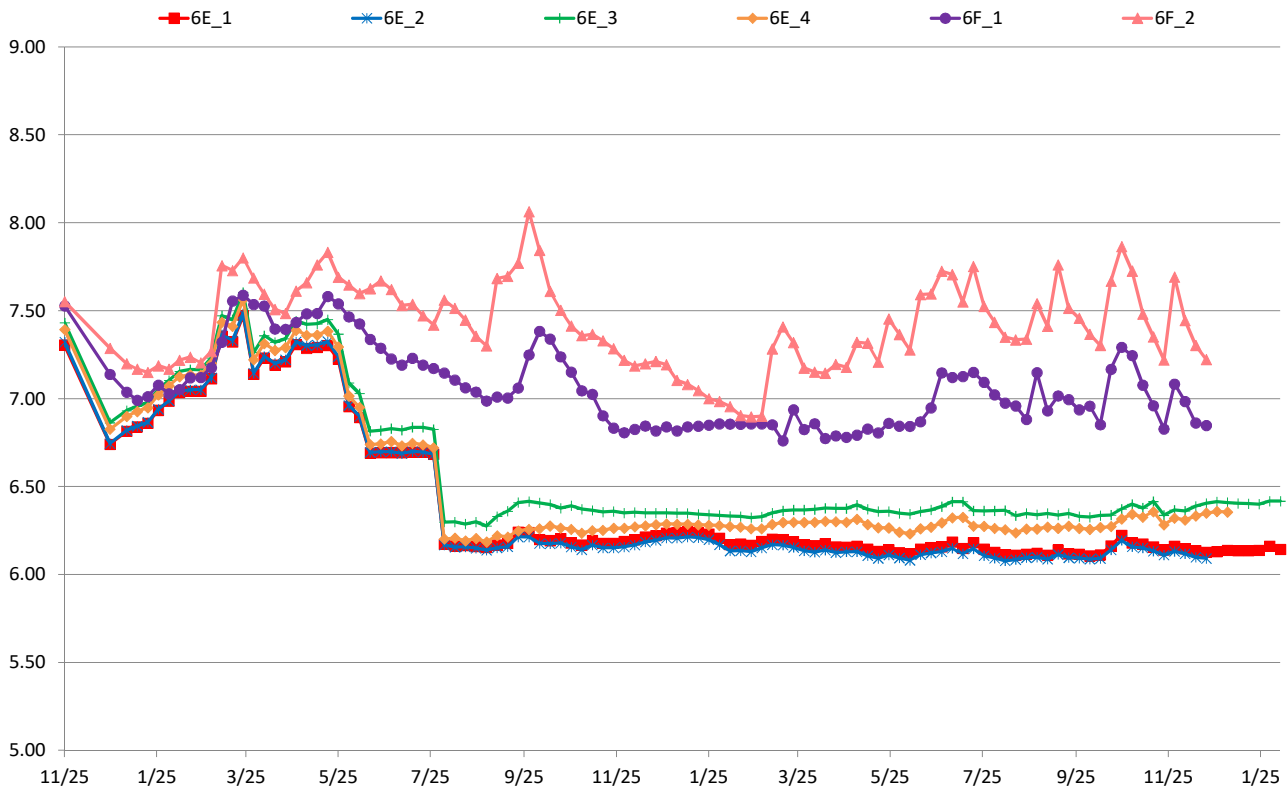
4丁目水位 (T.P+m)



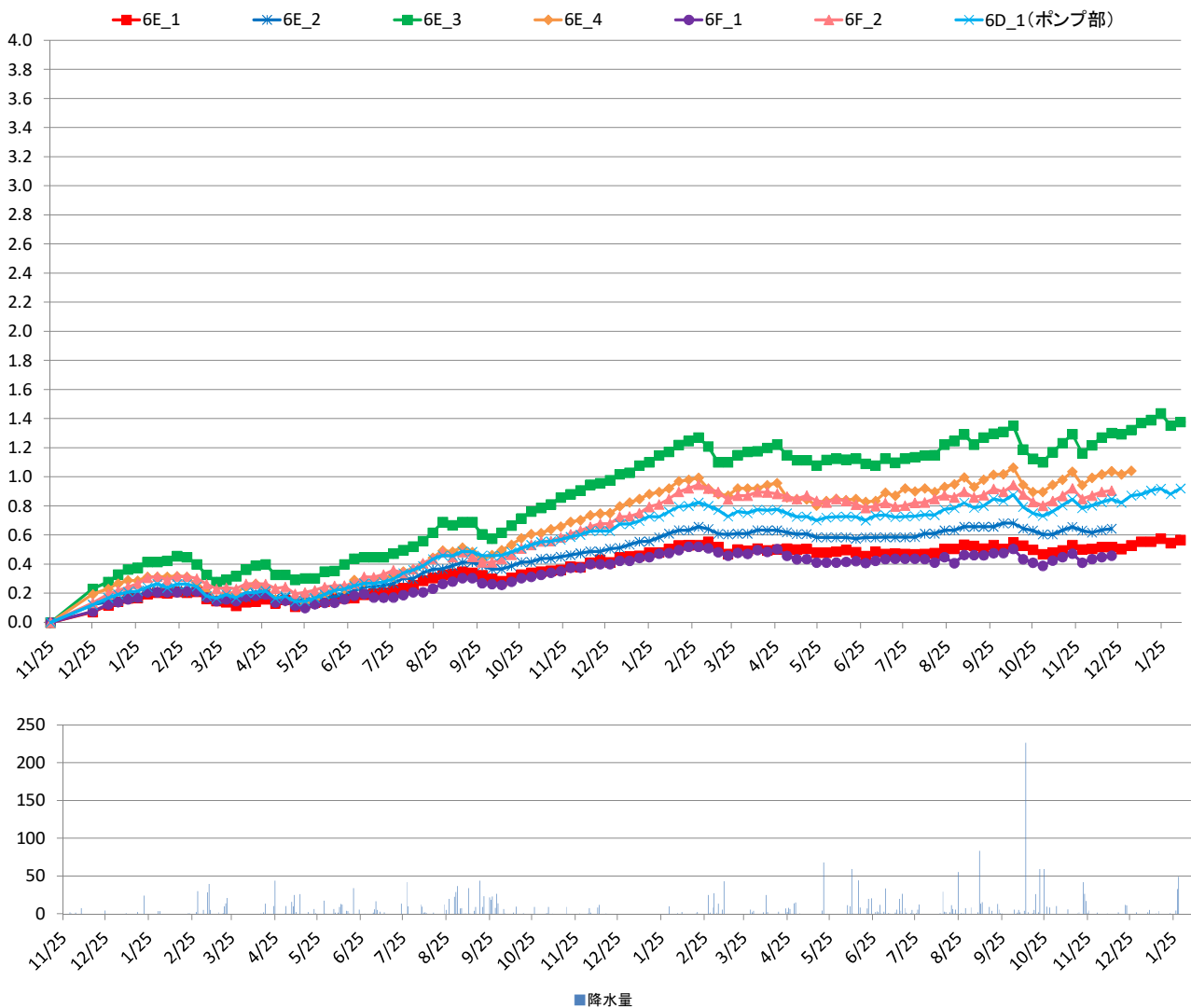
4丁目沈下 (G.L-cm)



6丁目水位 (T.P+m)

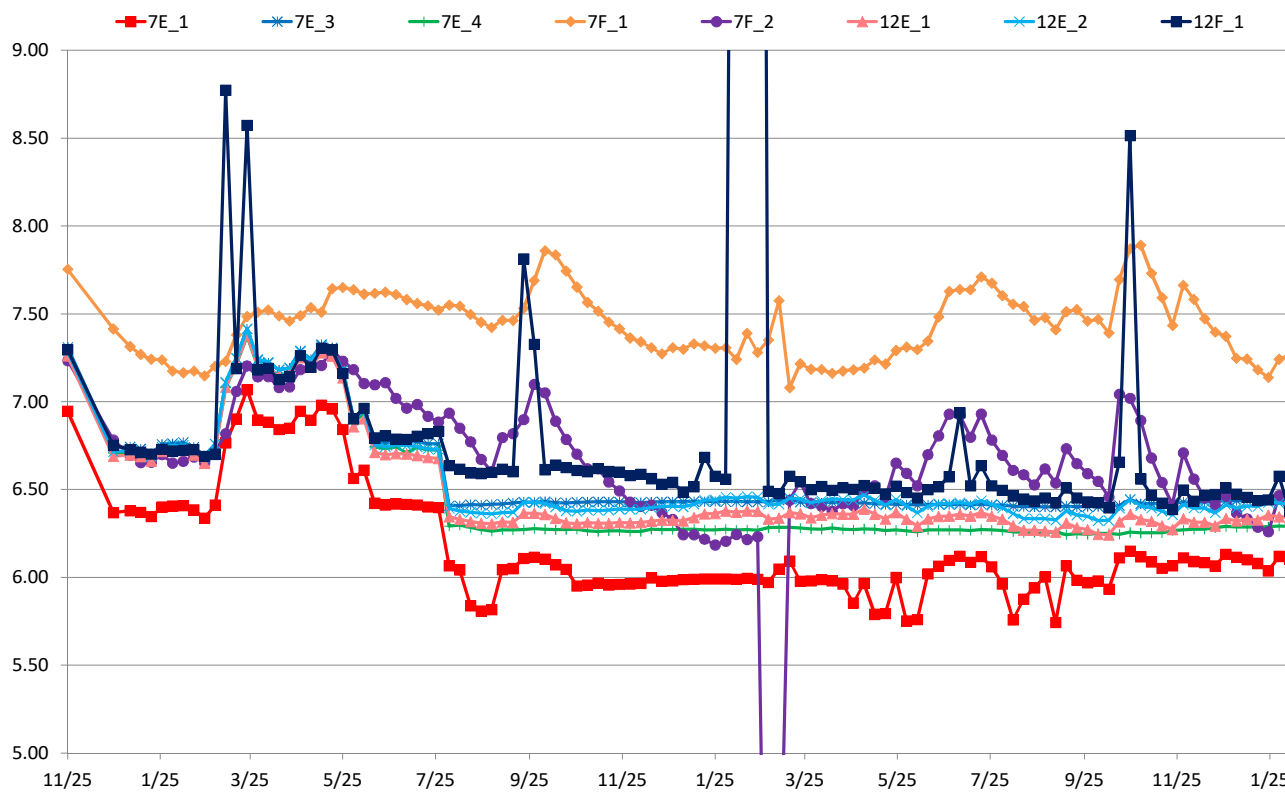


6丁目沈下 (G.L-cm)

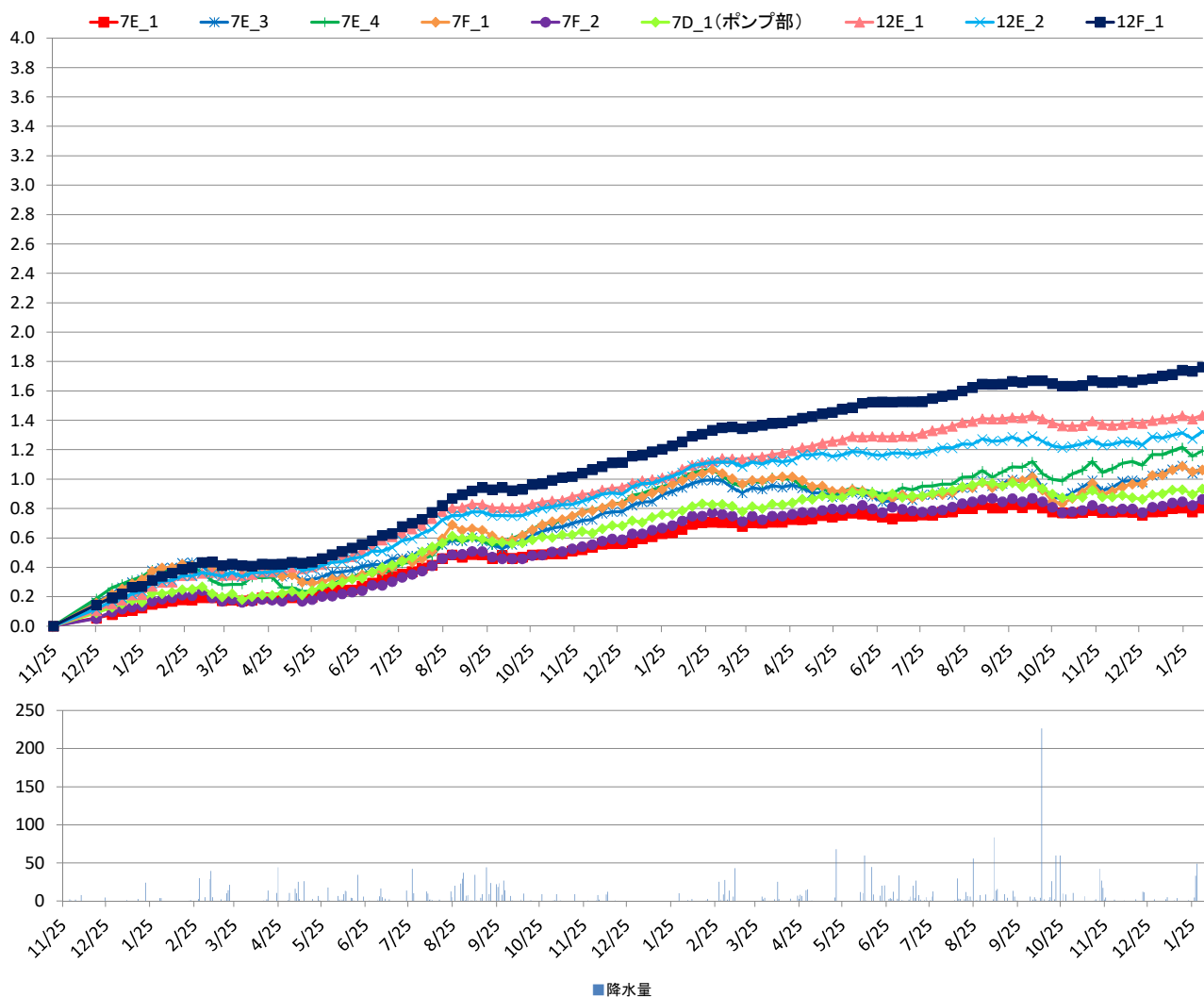


■降水量

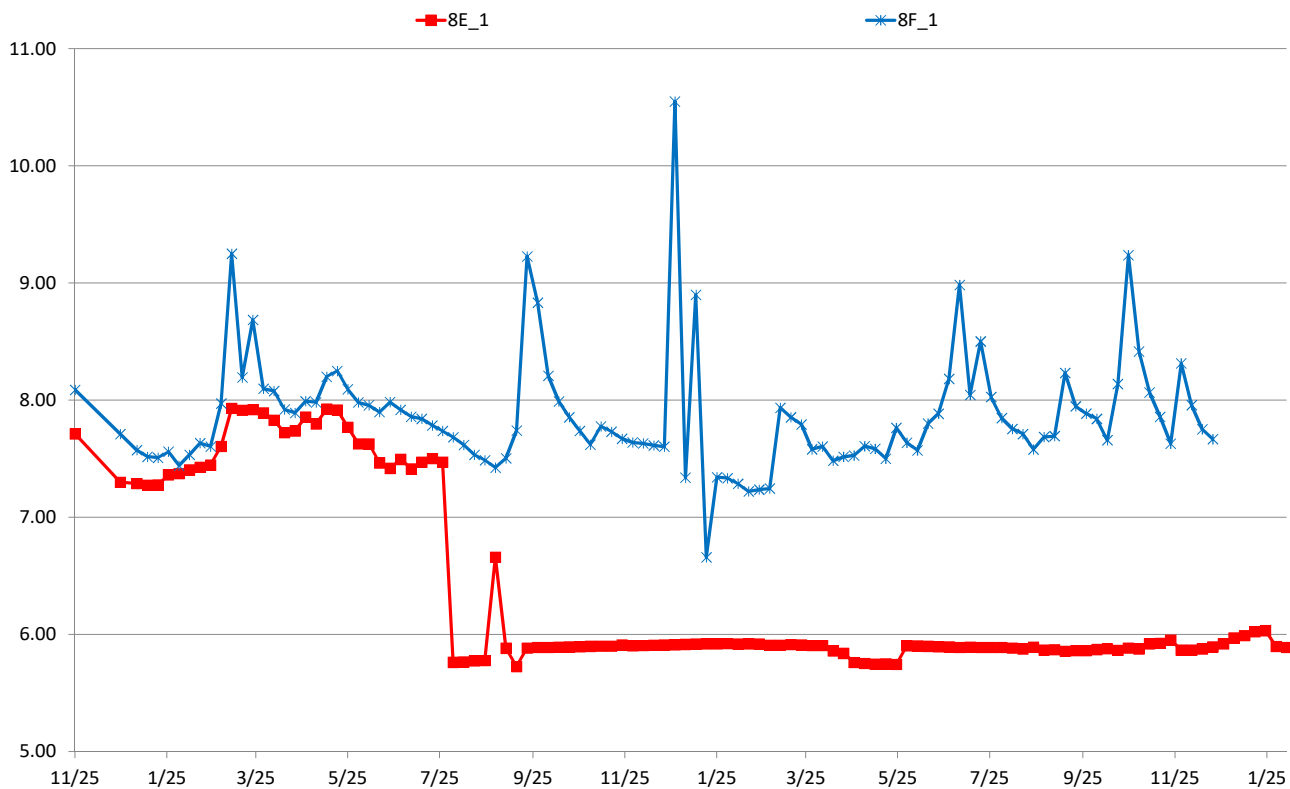
7・12丁目水位 (T.P+m)



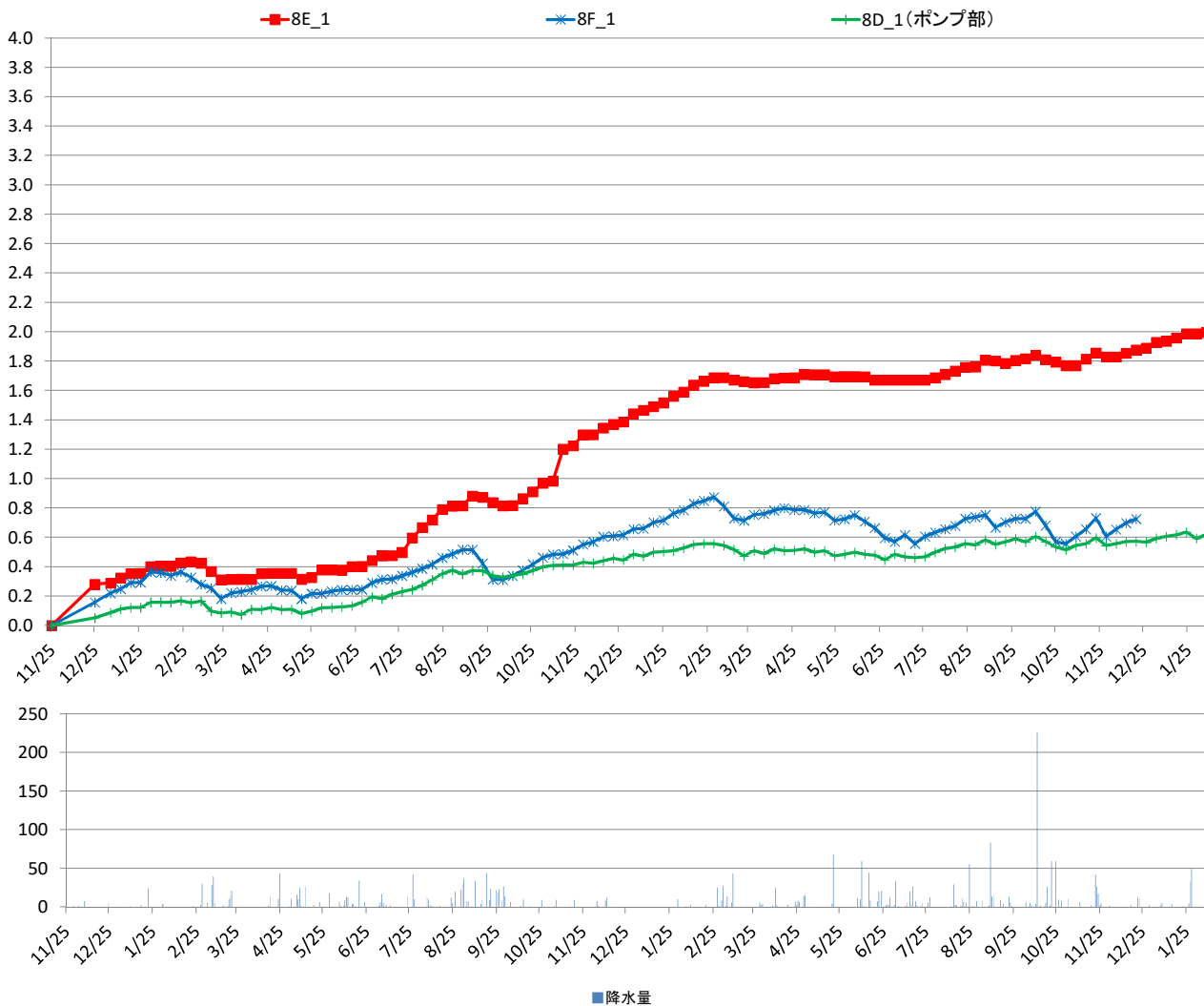
7・12丁目沈下 (G.L-cm)



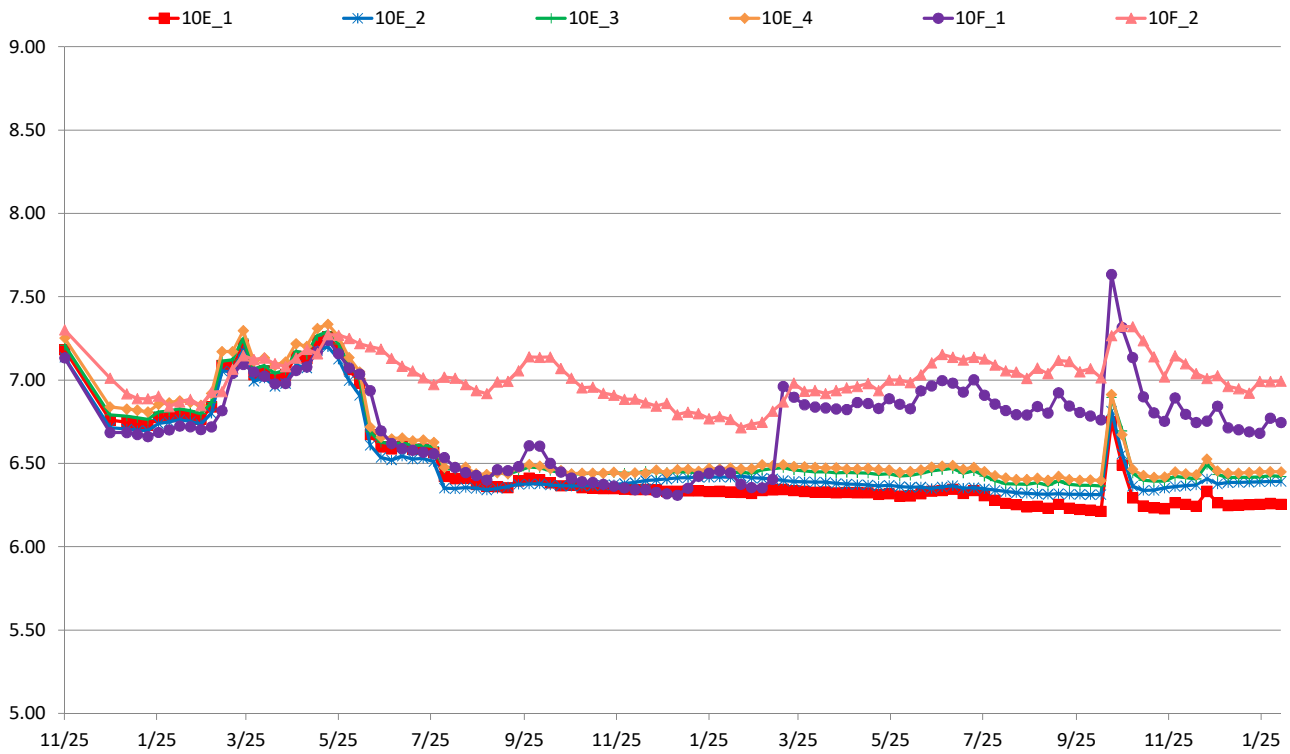
8丁目水位 (T.P+m)



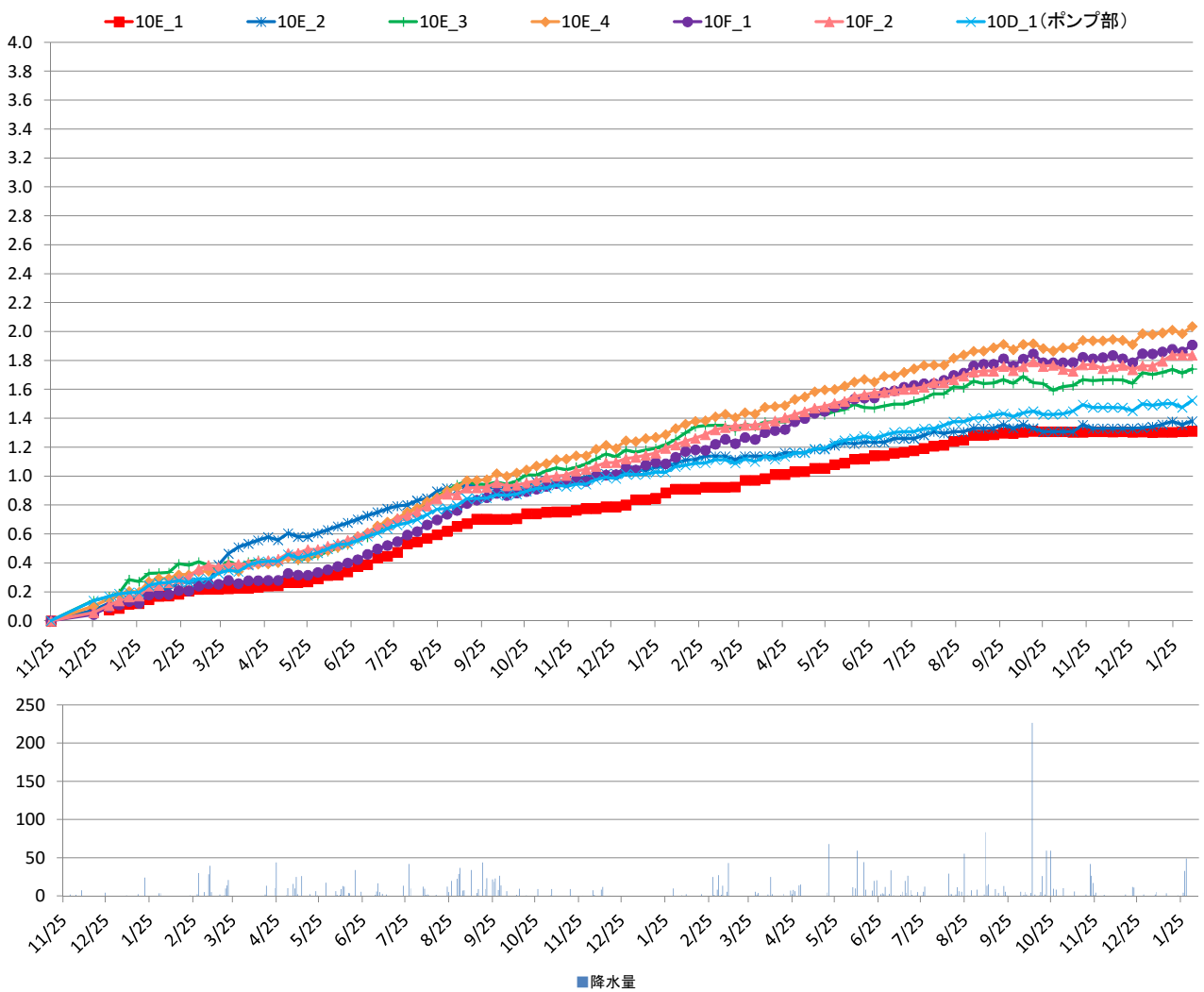
8丁目沈下 (G.L-cm)



10丁目水位 (T.P+m)

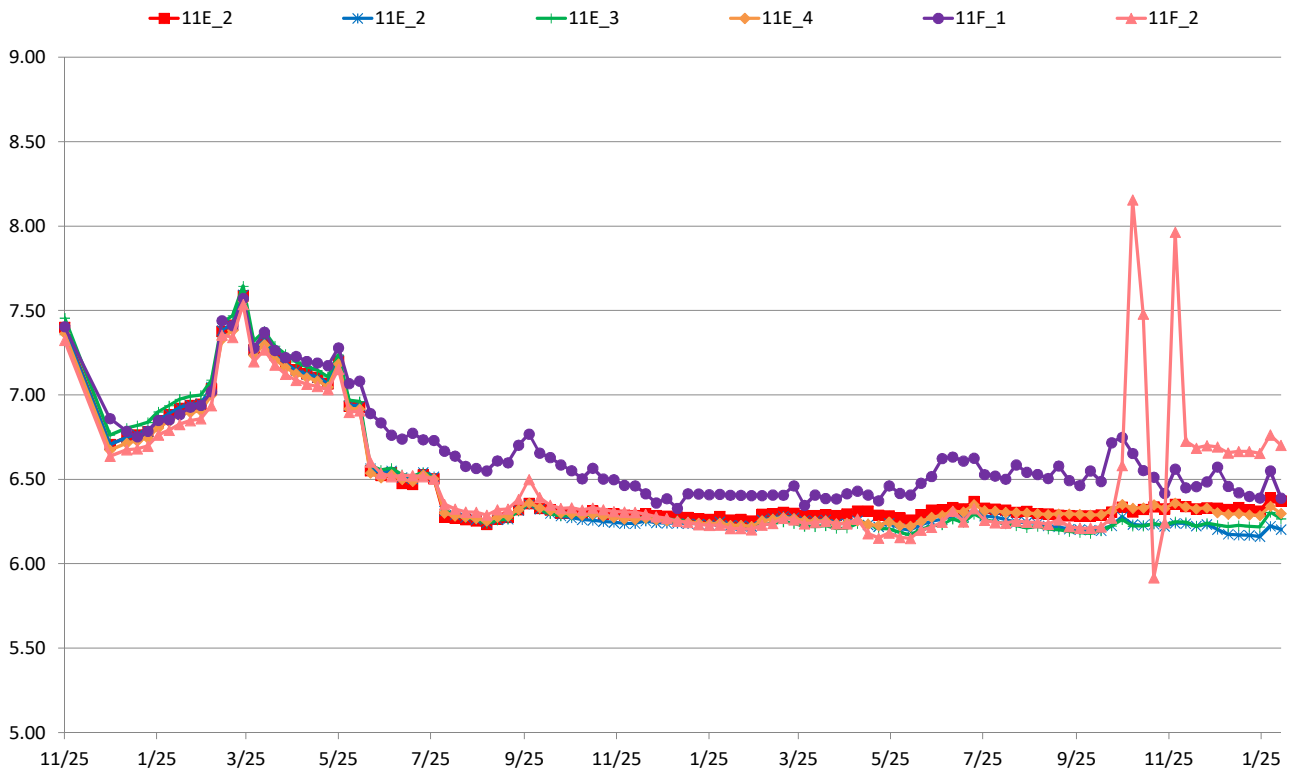


10丁目沈下 (G.L-cm)

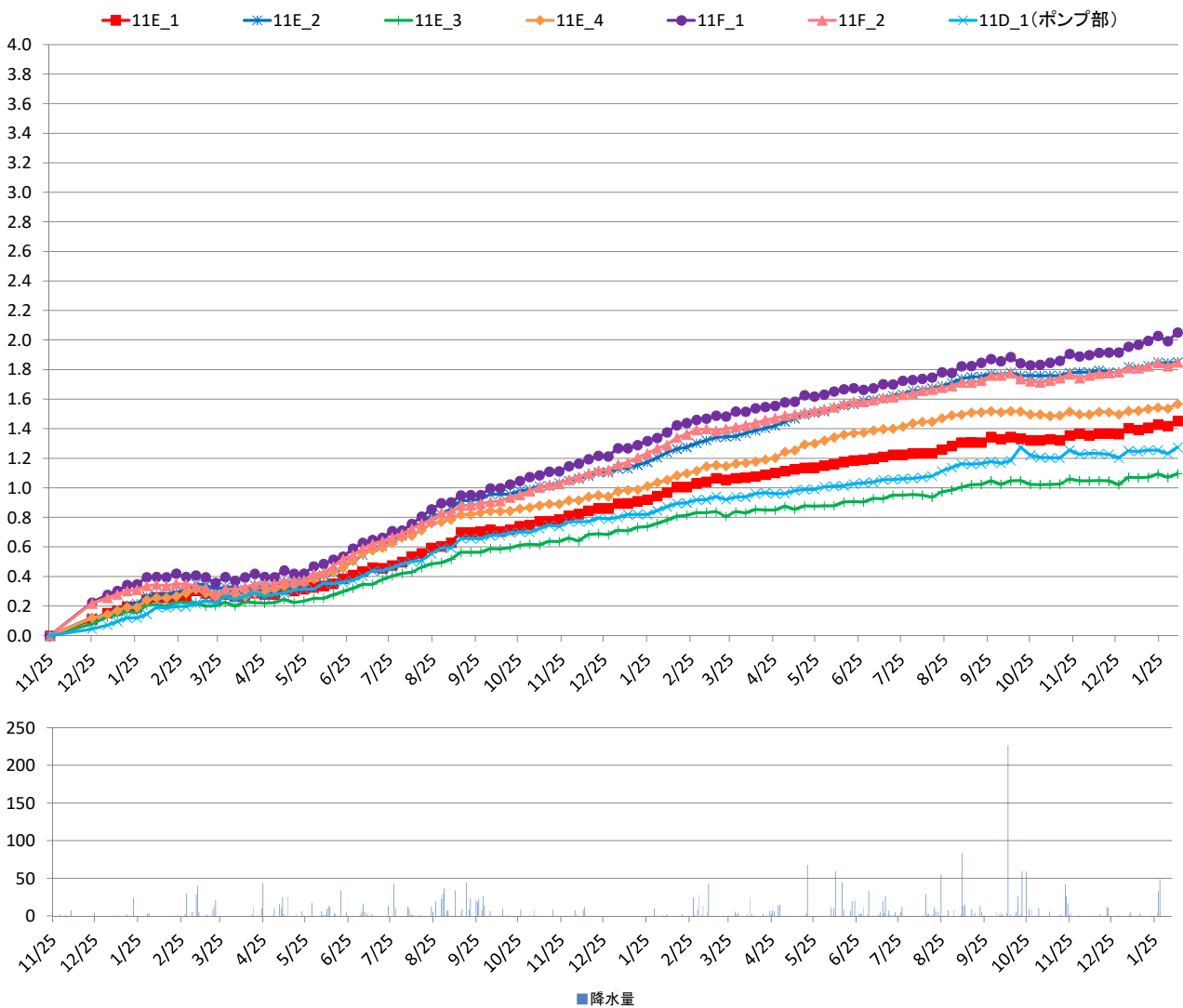


■降水量

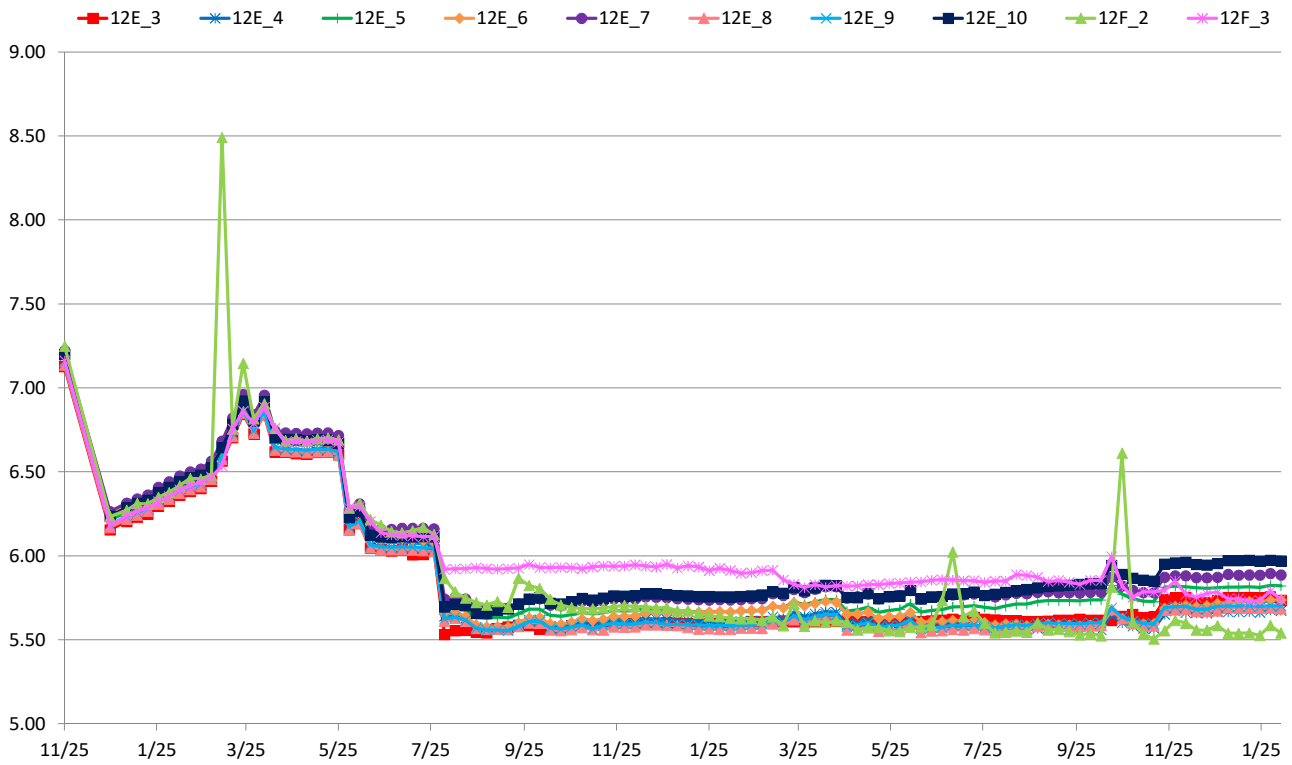
11丁目水位 (T.P+m)



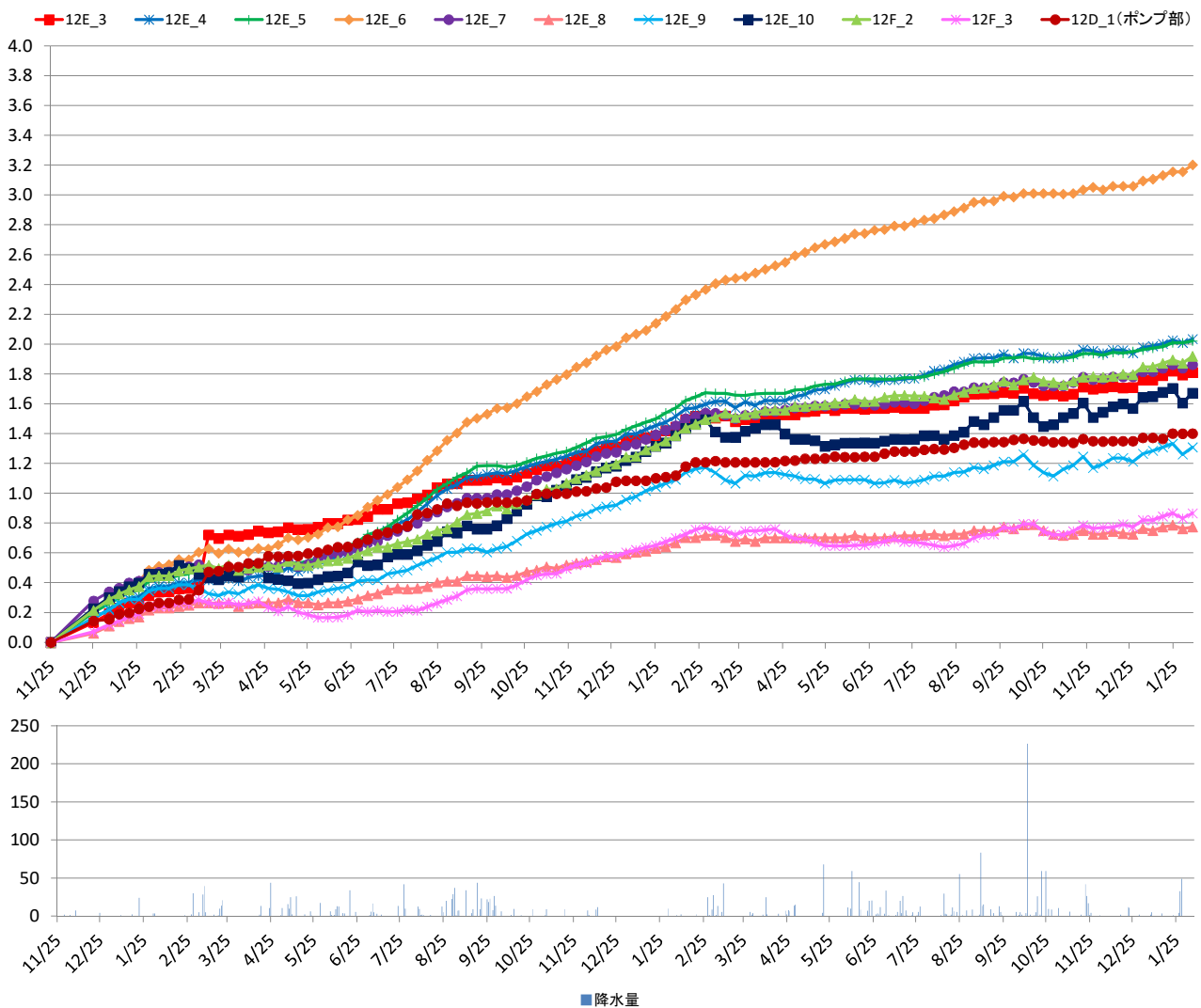
11丁目沈下 (G.L-cm)



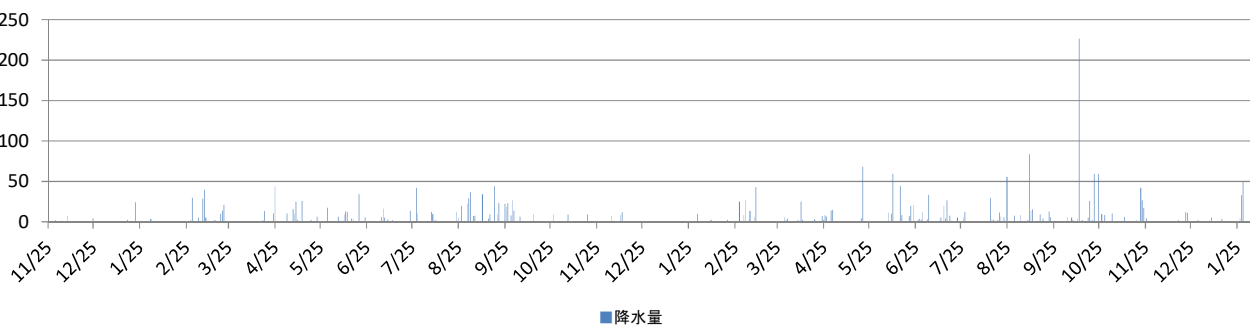
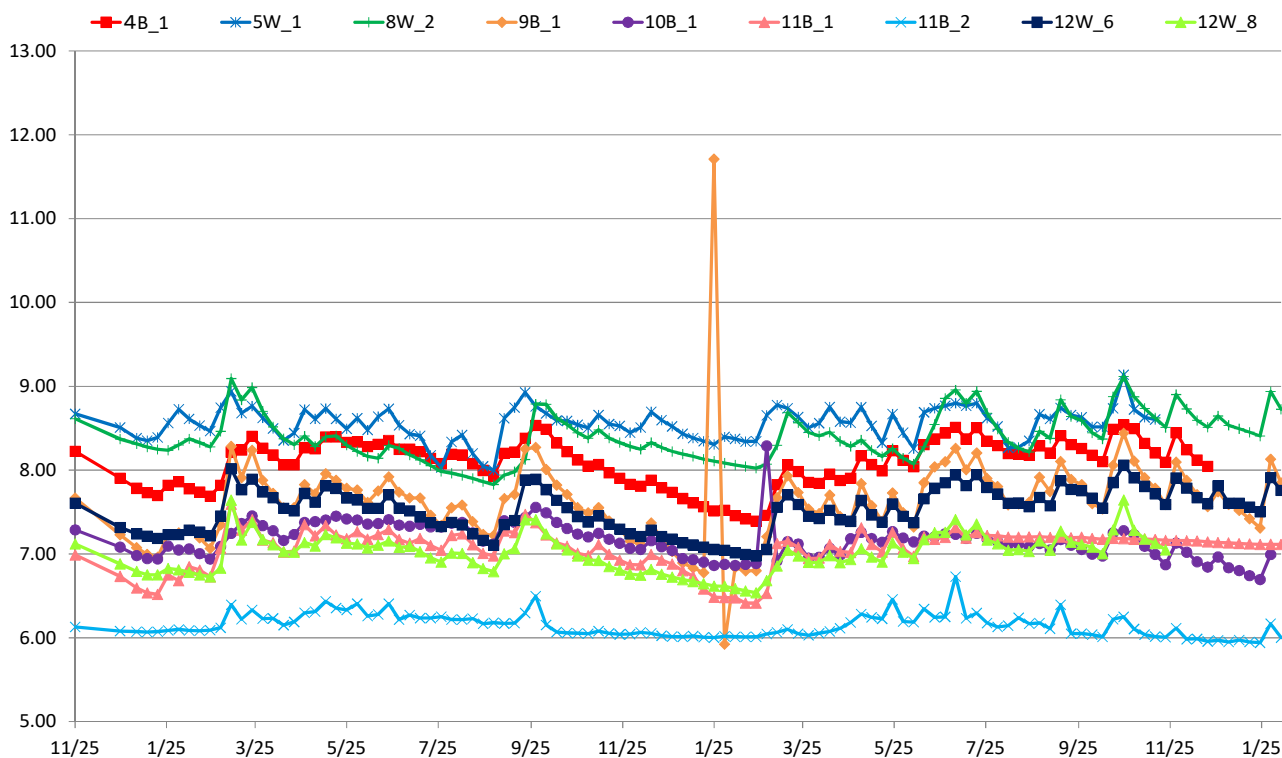
12丁目水位 (T.P+m)



12丁目沈下 (G.L-cm)



対策範囲外水位 (T.P+m)



[地下水位]

事業区域名	4丁目(民地部)			
	4F 1		4F 2	
計測地点名				
計測地点地盤高 (T.P.m)	9.14		9.26	
計測日	地下水位 (T.P.m)	地下水位 (G.L.m)	地下水位 (T.P.m)	地下水位 (G.L.m)
2017/11/25 12:00	8.40	-0.736	8.13	-1.127
2017/12/25 12:00	7.91	-1.231	7.90	-1.356
2018/1/5 12:00	7.78	-1.363	7.80	-1.457
2018/1/12 12:00	7.75	-1.391	7.76	-1.495
2018/1/19 12:00	7.76	-1.376	7.78	-1.484
2018/1/26 12:00	8.34	-0.797	7.84	-1.425
2018/2/2 12:00	8.45	-0.687	7.78	-1.480
2018/2/9 12:00	8.34	-0.803	7.81	-1.449
2018/2/16 12:00	8.34	-0.801	7.85	-1.407
2018/2/23 12:00	7.81	-1.329	7.83	-1.433
2018/3/2 12:00	8.42	-0.723	7.92	-1.339
2018/3/9 12:00	8.65	-0.495	8.05	-1.208
2018/3/16 12:00	8.50	-0.642	8.24	-1.016
2018/3/23 12:00	8.58	-0.562	8.30	-0.980
2018/3/30 12:00	8.48	-0.657	8.23	-1.034
2018/4/6 12:00	8.42	-0.716	8.22	-1.042
2018/4/13 12:00	8.40	-0.737	8.10	-1.158
2018/4/20 12:00	8.42	-0.723	8.09	-1.166
2018/4/27 12:00	8.47	-0.671	8.16	-1.100
2018/5/4 12:00	8.47	-0.673	8.20	-1.058
2018/5/11 12:00	8.52	-0.624	8.23	-1.029
2018/5/18 12:00	8.51	-0.627	8.33	-0.932
2018/5/25 12:00	8.49	-0.647	8.27	-0.993
2018/6/1 12:00	8.49	-0.654	8.22	-1.038
2018/6/8 12:00	8.45	-0.686	8.19	-1.073
2018/6/15 12:00	8.45	-0.689	8.12	-1.138
2018/6/22 12:00	8.45	-0.691	8.11	-1.155
2018/6/29 12:00	8.40	-0.744	8.05	-1.205
2018/7/6 12:00	8.53	-0.605	8.00	-1.263
2018/7/13 12:00	8.39	-0.752	8.00	-1.262
2018/7/20 12:00	8.03	-1.105	7.94	-1.318
2018/7/27 12:00	7.97	-1.174	7.91	-1.354
2018/8/3 12:00	8.05	-1.088	7.86	-1.396
2018/8/10 12:00	8.37	-0.773	7.80	-1.462
2018/8/17 12:00	7.87	-1.274	7.72	-1.537
2018/8/24 12:00	7.83	-1.307	7.67	-1.591
2018/8/31 12:00	7.80	-1.336	7.63	-1.631
2018/9/7 12:00	8.38	-0.756	7.77	-1.494
2018/9/14 12:00	8.42	-0.721	7.80	-1.462
2018/9/21 12:00	8.60	-0.543	7.89	-1.374
2018/9/28 12:00	8.55	-0.591	8.09	-1.175
2018/10/5 12:00	8.47	-0.669	8.10	-1.162
2018/10/12 12:00	8.42	-0.724	8.03	-1.232
2018/10/19 12:00	8.38	-0.761	7.92	-1.341
2018/10/26 12:00	8.37	-0.769	7.83	-1.432
2018/11/2 12:00	7.80	-1.336	7.75	-1.509
2018/11/9 12:00	8.37	-0.766	7.76	-1.495
2018/11/16 12:00	7.88	-1.264	7.71	-1.555
2018/11/23 12:00	7.83	-1.313	7.68	-1.578
2018/11/30 12:00	7.77	-1.368	7.63	-1.628
2018/12/7 12:00	7.80	-1.339	7.64	-1.622
2018/12/14 12:00	8.40	-0.741	7.61	-1.646
2018/12/21 12:00	7.67	-1.469	7.57	-1.694
2018/12/28 12:00	7.72	-1.424	7.58	-1.681
2019/1/4 12:00	7.63	-1.515	7.50	-1.761
2019/1/11 12:00	7.66	-1.485	7.51	-1.747
2019/1/18 12:00	7.64	-1.496	7.48	-1.782
2019/1/25 12:00	7.61	-1.532	7.44	-1.815
2019/2/1 12:00	8.45	-0.693	7.46	-1.797
2019/2/8 12:00	7.62	-1.522	7.43	-1.826
2019/2/15 12:00	7.58	-1.556	7.38	-1.885
2019/2/22 12:00	8.40	-0.738	7.38	-1.885
2019/3/1 12:00	8.55	-0.595	7.40	-1.857
2019/3/8 12:00	8.52	-0.619	7.53	-1.732
2019/3/15 12:00	8.47	-0.671	7.74	-1.519
2019/3/22 12:00	8.42	-0.719	7.84	-1.416
2019/3/29 12:00	7.77	-1.366	7.69	-1.566
2019/4/5 12:00	8.43	-0.708	7.71	-1.551
2019/4/12 12:00	8.53	-0.608	7.64	-1.616
2019/4/19 12:00	7.83	-1.312	7.66	-1.604
2019/4/26 12:00	8.49	-0.654	7.66	-1.596
2019/5/3 12:00	8.54	-0.598	7.66	-1.603
2019/5/10 12:00	8.00	-1.143	7.69	-1.573
2019/5/17 12:00	7.78	-1.357	7.62	-1.640
2019/5/24 12:00	8.49	-0.652	7.73	-1.533
2019/5/31 12:00	7.99	-1.146	7.71	-1.548
2019/6/7 12:00	7.86	-1.280	7.67	-1.592
2019/6/14 12:00	8.47	-0.666	7.80	-1.462
2019/6/21 12:00	8.53	-0.613	7.93	-1.327
2019/6/28 12:00	8.56	-0.581	8.10	-1.164
2019/7/5 12:00	8.65	-0.489	8.07	-1.188
2019/7/12 12:00	8.50	-0.643	8.04	-1.219
2019/7/19 12:00	8.61	-0.533	8.12	-1.138
2019/7/26 12:00	8.46	-0.678	8.04	-1.225
2019/8/2 12:00	8.44	-0.699	7.96	-1.304
2019/8/9 12:00	8.00	-1.138	7.89	-1.371
2019/8/16 12:00	8.43	-0.712	7.88	-1.378
2019/8/23 12:00	8.22	-0.917	7.81	-1.447
2019/8/30 12:00	8.45	-0.691	7.90	-1.357
2019/9/6 12:00	8.26	-0.878	7.84	-1.416
2019/9/13 12:00	8.52	-0.618	8.05	-1.211
2019/9/20 12:00	8.47	-0.673	7.99	-1.271
2019/9/27 12:00	8.44	-0.698	7.92	-1.343
2019/10/4 12:00	8.02	-1.122	7.95	-1.307
2019/10/11 12:00	7.97	-1.171	7.85	-1.409
2019/10/18 12:00	8.59	-0.550	8.16	-1.101
2019/10/25 12:00	8.78	-0.361	8.30	-0.956
2019/11/1 12:00	8.60	-0.544	8.28	-0.985
2019/11/8 12:00	8.49	-0.654	8.13	-1.131
2019/11/15 12:00	8.44	-0.695	8.01	-1.247
2019/11/22 12:00	7.91	-1.227	7.87	-1.394
2019/11/29 12:00	8.53	-0.614	8.14	-1.123
2019/12/6 12:00	8.44	-0.701	8.03	-1.230
2019/12/13 12:00	7.96	-1.179	7.93	-1.329
2019/12/20 12:00	7.94	-1.200	7.90	-1.360
2019/12/27 12:00	8.03	-1.106	-	-
2020/1/3 12:00	7.88	-1.259	-	-
2020/1/10 12:00	7.86	-1.281	-	-
2020/1/17 12:00	-	-	-	-
2020/1/24 12:00	-	-	-	-
2020/1/31 12:00	-	-	-	-
2020/2/7 12:00	-	-	-	-
1段階目水位 2018/2/24まで	7.84	-1.30	7.84	-1.42
2段階目水位 2018/5/24まで	7.75	-1.39	7.75	-1.51
最終水位 2018/8/24まで	7.66	-1.48	7.66	-1.60

[沈下量]

事業区域名	4丁目(民地部)	
	4F1	4F2
計測地点名	沈下量 (cm)	沈下量 (cm)
計測日		
2017/11/25 12:00	0.0	0.0
2017/12/25 12:00	0.2	0.1
2018/1/5 12:00	0.2	0.2
2018/1/12 12:00	0.3	0.2
2018/1/19 12:00	0.3	0.2
2018/1/26 12:00	0.3	0.3
2018/2/2 12:00	0.3	0.3
2018/2/9 12:00	0.3	0.3
2018/2/16 12:00	0.3	0.3
2018/2/23 12:00	0.3	0.3
2018/3/2 12:00	0.3	0.3
2018/3/9 12:00	0.3	0.3
2018/3/16 12:00	0.3	0.2
2018/3/23 12:00	0.2	0.2
2018/3/30 12:00	0.2	0.2
2018/4/6 12:00	0.2	0.2
2018/4/13 12:00	0.2	0.2
2018/4/20 12:00	0.3	0.3
2018/4/27 12:00	0.3	0.3
2018/5/4 12:00	0.2	0.2
2018/5/11 12:00	0.2	0.3
2018/5/18 12:00	0.2	0.2
2018/5/25 12:00	0.2	0.2
2018/6/1 12:00	0.2	0.2
2018/6/8 12:00	0.2	0.3
2018/6/15 12:00	0.3	0.3
2018/6/22 12:00	0.3	0.3
2018/6/29 12:00	0.3	0.3
2018/7/6 12:00	0.3	0.3
2018/7/13 12:00	0.3	0.4
2018/7/20 12:00	0.4	0.4
2018/7/27 12:00	0.4	0.4
2018/8/3 12:00	0.4	0.4
2018/8/10 12:00	0.4	0.5
2018/8/17 12:00	0.5	0.5
2018/8/24 12:00	0.5	0.6
2018/8/31 12:00	0.5	0.6
2018/9/7 12:00	0.5	0.6
2018/9/14 12:00	0.5	0.6
2018/9/21 12:00	0.5	0.6
2018/9/28 12:00	0.5	0.5
2018/10/5 12:00	0.5	0.5
2018/10/12 12:00	0.5	0.5
2018/10/19 12:00	0.5	0.5
2018/10/26 12:00	0.5	0.5
2018/11/2 12:00	0.6	0.6
2018/11/9 12:00	0.6	0.6
2018/11/16 12:00	0.6	0.6
2018/11/23 12:00	0.6	0.6
2018/11/30 12:00	0.7	0.7
2018/12/7 12:00	0.7	0.7
2018/12/14 12:00	0.7	0.7
2018/12/21 12:00	0.7	0.7
2018/12/28 12:00	0.7	0.8
2019/1/4 12:00	0.8	0.8
2019/1/11 12:00	0.8	0.8
2019/1/18 12:00	0.8	0.9
2019/1/25 12:00	0.8	0.9
2019/2/1 12:00	0.9	0.9
2019/2/8 12:00	0.9	1.0
2019/2/15 12:00	0.9	1.0
2019/2/22 12:00	0.9	1.0
2019/3/1 12:00	0.9	1.1
2019/3/8 12:00	0.9	1.0
2019/3/15 12:00	0.9	1.0
2019/3/22 12:00	0.8	0.9
2019/3/29 12:00	0.9	1.0
2019/4/5 12:00	0.9	1.0
2019/4/12 12:00	0.9	1.0
2019/4/19 12:00	0.9	1.0
2019/4/26 12:00	0.9	1.0
2019/5/3 12:00	0.9	1.0
2019/5/10 12:00	0.9	1.0
2019/5/17 12:00	0.9	1.0
2019/5/24 12:00	0.8	1.0
2019/5/31 12:00	0.9	1.0
2019/6/7 12:00	0.9	1.0
2019/6/14 12:00	0.9	1.0
2019/6/21 12:00	0.8	1.0
2019/6/28 12:00	0.8	0.9
2019/7/5 12:00	0.8	0.9
2019/7/12 12:00	0.8	0.9
2019/7/19 12:00	0.8	0.9
2019/7/26 12:00	0.8	0.9
2019/8/2 12:00	0.8	1.0
2019/8/9 12:00	0.8	1.0
2019/8/16 12:00	0.8	1.0
2019/8/23 12:00	0.9	1.0
2019/8/30 12:00	0.9	1.0
2019/9/6 12:00	0.9	1.1
2019/9/13 12:00	0.9	1.0
2019/9/20 12:00	0.9	1.0
2019/9/27 12:00	0.9	1.0
2019/10/4 12:00	0.9	1.0
2019/10/11 12:00	0.9	1.1
2019/10/18 12:00	0.9	1.0
2019/10/25 12:00	0.8	1.0
2019/11/1 12:00	0.8	0.9
2019/11/8 12:00	0.8	1.0
2019/11/15 12:00	0.8	1.0
2019/11/22 12:00	0.9	1.1
2019/11/29 12:00	0.9	1.0
2019/12/6 12:00	0.9	1.0
2019/12/13 12:00	0.9	1.0
2019/12/20 12:00	0.9	1.1
2019/12/27 12:00	0.9	-
2020/1/3 12:00	0.9	-
2020/1/10 12:00	1.0	-
2020/1/17 12:00	-	-
2020/1/24 12:00	-	-
2020/1/31 12:00	-	-
2020/2/7 12:00	-	-

[沈下量]

事業区域名 計測地点名	4丁目(道路部)					
	4E 1 沈下量 (cm)	4E 2 沈下量 (cm)	4E 3 沈下量 (cm)	4E 4 沈下量 (cm)	4E 5 沈下量 (cm)	4D.1(ポンプ部) 沈下量 (cm)
2017/11/25 12:00	0.0	0.0	0.0	0.0	0.0	0.0
2017/12/25 12:00	0.1	0.2	0.2	0.1	0.2	0.1
2018/1/5 12:00	0.2	0.3	0.2	0.2	0.2	0.2
2018/1/12 12:00	0.2	0.3	0.3	0.2	0.2	0.2
2018/1/19 12:00	0.2	0.3	0.3	0.2	0.3	0.2
2018/1/26 12:00	0.3	0.3	0.3	0.2	0.3	0.2
2018/2/2 12:00	0.3	0.4	0.3	0.3	0.3	0.2
2018/2/9 12:00	0.3	0.4	0.3	0.3	0.3	0.2
2018/2/16 12:00	0.3	0.4	0.3	0.3	0.3	0.2
2018/2/23 12:00	0.3	0.4	0.3	0.3	0.3	0.2
2018/3/2 12:00	0.3	0.4	0.3	0.3	0.3	0.2
2018/3/9 12:00	0.3	0.4	0.3	0.3	0.3	0.2
2018/3/16 12:00	0.2	0.4	0.3	0.2	0.2	0.2
2018/3/23 12:00	0.2	0.4	0.2	0.2	0.2	0.1
2018/3/30 12:00	0.2	0.4	0.2	0.2	0.2	0.2
2018/4/6 12:00	0.2	0.4	0.2	0.2	0.2	0.1
2018/4/13 12:00	0.2	0.4	0.2	0.2	0.2	0.2
2018/4/20 12:00	0.3	0.5	0.3	0.2	0.2	0.2
2018/4/27 12:00	0.3	0.5	0.2	0.2	0.2	0.2
2018/5/4 12:00	0.3	0.5	0.2	0.2	0.2	0.2
2018/5/11 12:00	0.3	0.5	0.2	0.2	0.2	0.2
2018/5/18 12:00	0.2	0.5	0.2	0.2	0.2	0.1
2018/5/25 12:00	0.3	0.5	0.2	0.2	0.2	0.1
2018/6/1 12:00	0.3	0.6	0.2	0.2	0.2	0.2
2018/6/8 12:00	0.3	0.6	0.2	0.2	0.2	0.2
2018/6/15 12:00	0.3	0.7	0.3	0.2	0.2	0.2
2018/6/22 12:00	0.3	0.7	0.3	0.2	0.2	0.2
2018/6/29 12:00	0.3	0.8	0.3	0.3	0.3	0.2
2018/7/6 12:00	0.4	0.8	0.3	0.3	0.3	0.3
2018/7/13 12:00	0.4	0.9	0.3	0.3	0.3	0.2
2018/7/20 12:00	0.5	0.9	0.4	0.3	0.3	0.3
2018/7/27 12:00	0.5	0.9	0.4	0.4	0.3	0.3
2018/8/3 12:00	0.5	1.0	0.5	0.4	0.4	0.4
2018/8/10 12:00	0.5	1.0	0.5	0.4	0.4	0.4
2018/8/17 12:00	0.6	1.0	0.5	0.4	0.5	0.4
2018/8/24 12:00	0.6	1.1	0.6	0.5	0.5	0.4
2018/8/31 12:00	0.6	1.1	0.6	0.5	0.5	0.5
2018/9/7 12:00	0.6	1.1	0.6	0.5	0.5	0.5
2018/9/14 12:00	0.6	1.1	0.6	0.5	0.5	0.5
2018/9/21 12:00	0.5	1.1	0.6	0.5	0.5	0.5
2018/9/28 12:00	0.5	1.1	0.6	0.4	0.5	0.4
2018/10/5 12:00	0.5	1.1	0.6	0.4	0.5	0.5
2018/10/12 12:00	0.5	1.1	0.6	0.4	0.5	0.4
2018/10/19 12:00	0.5	1.1	0.6	0.4	0.5	0.4
2018/10/26 12:00	0.5	1.1	0.6	0.5	0.5	0.5
2018/11/2 12:00	0.5	1.2	0.6	0.5	0.5	0.5
2018/11/9 12:00	0.6	1.2	0.7	0.5	0.5	0.5
2018/11/16 12:00	0.6	1.2	0.7	0.5	0.5	0.5
2018/11/23 12:00	0.6	1.2	0.7	0.5	0.6	0.5
2018/11/30 12:00	0.6	1.2	0.7	0.5	0.6	0.6
2018/12/7 12:00	0.6	1.2	0.7	0.6	0.6	0.5
2018/12/14 12:00	0.7	1.3	0.7	0.6	0.6	0.6
2018/12/21 12:00	0.7	1.3	0.8	0.6	0.6	0.6
2018/12/28 12:00	0.7	1.3	0.8	0.6	0.6	0.6
2019/1/4 12:00	0.7	1.3	0.8	0.6	0.7	0.6
2019/1/11 12:00	0.7	1.3	0.8	0.6	0.7	0.6
2019/1/18 12:00	0.7	1.3	0.9	0.7	0.7	0.7
2019/1/25 12:00	0.8	1.3	0.9	0.7	0.7	0.7
2019/2/1 12:00	0.8	1.4	0.9	0.7	0.8	0.7
2019/2/8 12:00	0.8	1.4	0.9	0.7	0.8	0.7
2019/2/15 12:00	0.9	1.4	1.0	0.8	0.8	0.7
2019/2/22 12:00	0.9	1.4	1.0	0.8	0.8	0.7
2019/3/1 12:00	0.9	1.4	1.0	0.8	0.8	0.7
2019/3/8 12:00	0.8	1.4	1.0	0.8	0.8	0.7
2019/3/15 12:00	0.8	1.4	0.9	0.7	0.7	0.7
2019/3/22 12:00	0.7	1.4	0.9	0.7	0.7	0.6
2019/3/29 12:00	0.8	1.4	0.9	0.7	0.7	0.7
2019/4/5 12:00	0.8	1.4	0.9	0.7	0.7	0.7
2019/4/12 12:00	0.8	1.4	0.9	0.7	0.7	0.7
2019/4/19 12:00	0.8	1.4	0.9	0.7	0.8	0.7
2019/4/26 12:00	0.8	1.4	0.9	0.7	0.8	0.7
2019/5/3 12:00	0.8	1.4	0.9	0.7	0.7	0.7
2019/5/10 12:00	0.8	1.4	0.9	0.7	0.7	0.7
2019/5/17 12:00	0.8	1.4	0.9	0.7	0.8	0.7
2019/5/24 12:00	0.8	1.4	0.9	0.7	0.7	0.7
2019/5/31 12:00	0.8	1.4	0.9	0.7	0.7	0.7
2019/6/7 12:00	0.9	1.5	0.9	0.7	0.7	0.7
2019/6/14 12:00	0.8	1.5	0.9	0.7	0.7	0.7
2019/6/21 12:00	0.8	1.5	0.8	0.7	0.7	0.7
2019/6/28 12:00	0.8	1.5	0.8	0.6	0.7	0.6
2019/7/5 12:00	0.8	1.5	0.8	0.6	0.7	0.6
2019/7/12 12:00	0.8	1.5	0.8	0.7	0.7	0.7
2019/7/19 12:00	0.8	1.5	0.8	0.6	0.7	0.6
2019/7/26 12:00	0.8	1.5	0.8	0.7	0.7	0.7
2019/8/2 12:00	0.8	1.6	0.9	0.7	0.7	0.7
2019/8/9 12:00	0.8	1.6	0.9	0.7	0.7	0.7
2019/8/16 12:00	0.9	1.6	0.9	0.7	0.7	0.7
2019/8/23 12:00	0.9	1.6	0.9	0.7	0.8	0.7
2019/8/30 12:00	0.9	1.7	0.9	0.7	0.8	0.7
2019/9/6 12:00	0.9	1.7	0.9	0.8	0.8	0.7
2019/9/13 12:00	0.8	1.7	0.9	0.7	0.7	0.7
2019/9/20 12:00	0.8	1.7	0.9	0.7	0.8	0.7
2019/9/27 12:00	0.9	1.7	1.0	0.8	0.8	0.8
2019/10/4 12:00	0.9	1.7	0.9	0.7	0.8	0.7
2019/10/11 12:00	0.9	1.8	1.0	0.8	0.8	0.8
2019/10/18 12:00	0.8	1.8	0.9	0.7	0.8	0.7
2019/10/25 12:00	0.8	1.8	0.9	0.7	0.7	0.7
2019/11/1 12:00	0.7	1.8	0.8	0.6	0.7	0.7
2019/11/8 12:00	0.8	1.9	0.9	0.7	0.7	0.7
2019/11/15 12:00	0.8	1.9	0.9	0.7	0.7	0.7
2019/11/22 12:00	0.8	1.9	0.9	0.7	0.8	0.8
2019/11/29 12:00	0.8	2.0	0.9	0.7	0.7	0.7
2019/12/6 12:00	0.8	2.0	0.9	0.7	0.7	0.7
2019/12/13 12:00	0.8	2.0	0.9	0.7	0.7	0.7
2019/12/20 12:00	0.8	2.0	0.9	0.7	0.8	0.7
2019/12/27 12:00	-	2.0	0.9	0.7	-	0.7
2020/1/3 12:00	-	2.0	1.0	0.7	-	0.8
2020/1/10 12:00	-	2.1	1.0	0.7	-	0.8
2020/1/17 12:00	-	2.1	1.0	0.8	-	0.8
2020/1/24 12:00	-	2.1	1.0	0.8	-	0.8
2020/1/31 12:00	-	2.1	1.0	0.7	-	0.8
2020/2/7 12:00	-	2.1	1.0	0.8	-	0.8

[地下水位]				
事業区域名				
6丁目(民地部)				
計測地点名	6F_1		6F_2	
	計測地点地盤高 (T.P.m)		9.37	
計測日	地下水位 (T.P.m)	地下水位 (G.L.m)	地下水位 (T.P.m)	地下水位 (G.L.m)
2017/11/25 12:00	7.53	-1.832	7.55	-1.818
2017/12/25 12:00	7.14	-2.221	7.29	-2.083
2018/1/5 12:00	7.04	-2.322	7.20	-2.170
2018/1/12 12:00	6.99	-2.368	7.17	-2.201
2018/1/19 12:00	7.01	-2.347	7.15	-2.220
2018/1/26 12:00	7.08	-2.283	7.19	-2.182
2018/2/2 12:00	7.03	-2.332	7.17	-2.201
2018/2/9 12:00	7.05	-2.308	7.22	-2.151
2018/2/16 12:00	7.12	-2.240	7.24	-2.133
2018/2/23 12:00	7.12	-2.239	7.20	-2.165
2018/3/2 12:00	7.18	-2.183	7.27	-2.101
2018/3/9 12:00	7.32	-2.038	7.76	-1.612
2018/3/16 12:00	7.56	-1.804	7.73	-1.640
2018/3/23 12:00	7.59	-1.771	7.80	-1.568
2018/3/30 12:00	7.54	-1.824	7.69	-1.682
2018/4/6 12:00	7.53	-1.832	7.60	-1.775
2018/4/13 12:00	7.40	-1.963	7.51	-1.862
2018/4/20 12:00	7.40	-1.964	7.49	-1.885
2018/4/27 12:00	7.43	-1.926	7.61	-1.758
2018/5/4 12:00	7.48	-1.877	7.66	-1.710
2018/5/11 12:00	7.48	-1.875	7.76	-1.608
2018/5/18 12:00	7.58	-1.778	7.83	-1.537
2018/5/25 12:00	7.54	-1.819	7.69	-1.678
2018/6/1 12:00	7.47	-1.894	7.65	-1.723
2018/6/8 12:00	7.43	-1.934	7.60	-1.772
2018/6/15 12:00	7.34	-2.022	7.63	-1.744
2018/6/22 12:00	7.29	-2.072	7.67	-1.700
2018/6/29 12:00	7.23	-2.133	7.62	-1.749
2018/7/6 12:00	7.19	-2.168	7.53	-1.840
2018/7/13 12:00	7.23	-2.129	7.54	-1.833
2018/7/20 12:00	7.19	-2.168	7.47	-1.898
2018/7/27 12:00	7.17	-2.188	7.42	-1.951
2018/8/3 12:00	7.15	-2.213	7.56	-1.809
2018/8/10 12:00	7.11	-2.253	7.51	-1.856
2018/8/17 12:00	7.06	-2.297	7.45	-1.922
2018/8/24 12:00	7.04	-2.321	7.36	-2.014
2018/8/31 12:00	6.99	-2.372	7.30	-2.069
2018/9/7 12:00	7.01	-2.349	7.68	-1.686
2018/9/14 12:00	7.00	-2.356	7.70	-1.673
2018/9/21 12:00	7.06	-2.298	7.77	-1.598
2018/9/28 12:00	7.25	-2.110	8.06	-1.306
2018/10/5 12:00	7.38	-1.976	7.84	-1.525
2018/10/12 12:00	7.34	-2.020	7.61	-1.759
2018/10/19 12:00	7.24	-2.121	7.50	-1.867
2018/10/26 12:00	7.15	-2.208	7.41	-1.956
2018/11/2 12:00	7.05	-2.314	7.36	-2.011
2018/11/9 12:00	7.03	-2.335	7.37	-2.002
2018/11/16 12:00	6.90	-2.457	7.33	-2.040
2018/11/23 12:00	6.83	-2.527	7.28	-2.085
2018/11/30 12:00	6.81	-2.553	7.22	-2.151
2018/12/7 12:00	6.83	-2.534	7.19	-2.183
2018/12/14 12:00	6.85	-2.514	7.20	-2.171
2018/12/21 12:00	6.82	-2.542	7.21	-2.157
2018/12/28 12:00	6.84	-2.519	7.19	-2.176
2019/1/4 12:00	6.82	-2.542	7.11	-2.265
2019/1/11 12:00	6.84	-2.519	7.08	-2.288
2019/1/18 12:00	6.84	-2.515	7.05	-2.324
2019/1/25 12:00	6.85	-2.510	7.00	-2.370
2019/2/1 12:00	6.86	-2.503	6.98	-2.386
2019/2/8 12:00	6.86	-2.504	6.96	-2.415
2019/2/15 12:00	6.86	-2.505	6.90	-2.465
2019/2/22 12:00	6.86	-2.503	6.90	-2.472
2019/3/1 12:00	6.86	-2.503	6.90	-2.469
2019/3/8 12:00	6.85	-2.508	7.28	-2.086
2019/3/15 12:00	6.76	-2.599	7.41	-1.961
2019/3/22 12:00	6.94	-2.422	7.32	-2.050
2019/3/29 12:00	6.83	-2.534	7.18	-2.195
2019/4/5 12:00	6.86	-2.501	7.15	-2.219
2019/4/12 12:00	6.77	-2.586	7.15	-2.225
2019/4/19 12:00	6.79	-2.570	7.20	-2.174
2019/4/26 12:00	6.78	-2.578	7.18	-2.191
2019/5/3 12:00	6.79	-2.566	7.32	-2.048
2019/5/10 12:00	6.83	-2.532	7.32	-2.053
2019/5/17 12:00	6.81	-2.553	7.21	-2.161
2019/5/24 12:00	6.86	-2.499	7.45	-1.916
2019/5/31 12:00	6.84	-2.516	7.37	-2.003
2019/6/7 12:00	6.84	-2.516	7.28	-2.092
2019/6/14 12:00	6.87	-2.491	7.59	-1.778
2019/6/21 12:00	6.95	-2.411	7.60	-1.774
2019/6/28 12:00	7.15	-2.212	7.73	-1.644
2019/7/5 12:00	7.12	-2.238	7.71	-1.664
2019/7/12 12:00	7.13	-2.233	7.55	-1.819
2019/7/19 12:00	7.15	-2.209	7.75	-1.617
2019/7/26 12:00	7.09	-2.266	7.53	-1.844
2019/8/2 12:00	7.02	-2.338	7.44	-1.935
2019/8/9 12:00	6.98	-2.385	7.35	-2.020
2019/8/16 12:00	6.96	-2.400	7.34	-2.035
2019/8/23 12:00	6.88	-2.477	7.34	-2.031
2019/8/30 12:00	7.15	-2.211	7.54	-1.829
2019/9/6 12:00	6.93	-2.428	7.41	-1.958
2019/9/13 12:00	7.02	-2.344	7.76	-1.609
2019/9/20 12:00	7.00	-2.364	7.52	-1.854
2019/9/27 12:00	6.94	-2.422	7.46	-1.912
2019/10/4 12:00	6.96	-2.401	7.37	-2.003
2019/10/11 12:00	6.85	-2.507	7.30	-2.066
2019/10/18 12:00	7.17	-2.192	7.67	-1.700
2019/10/25 12:00	7.29	-2.067	7.87	-1.505
2019/11/1 12:00	7.25	-2.115	7.73	-1.643
2019/11/8 12:00	7.08	-2.282	7.48	-1.887
2019/11/15 12:00	6.96	-2.399	7.35	-2.018
2019/11/22 12:00	6.83	-2.532	7.22	-2.149
2019/11/29 12:00	7.08	-2.276	7.69	-1.677
2019/12/6 12:00	6.98	-2.375	7.45	-1.925
2019/12/13 12:00	6.86	-2.498	7.30	-2.066
2019/12/20 12:00	6.85	-2.511	7.22	-2.147
2019/12/27 12:00	-	-	-	-
2020/1/3 12:00	-	-	-	-
2020/1/10 12:00	-	-	-	-
2020/1/17 12:00	-	-	-	-
2020/1/24 12:00	-	-	-	-
2020/1/31 12:00	-	-	-	-
2020/2/7 12:00	-	-	-	-
1段階目水位 2018/2/24まで	7.10	-2.26	7.10	-2.27
2段階目水位 2018/5/24まで	6.90	-2.46	6.90	-2.47
最終水位 2018/8/24まで	6.70	-2.66	6.70	-2.67

[沈下量]

事業区域名 計測地点名 計測日	6丁目(民地部)	
	6F.1 沈下量 (cm)	6F.2 沈下量 (cm)
2017/11/25 12:00	0.0	0.0
2017/12/25 12:00	0.1	0.1
2018/1/5 12:00	0.1	0.2
2018/1/12 12:00	0.1	0.2
2018/1/19 12:00	0.2	0.2
2018/1/26 12:00	0.2	0.3
2018/2/2 12:00	0.2	0.3
2018/2/9 12:00	0.2	0.3
2018/2/16 12:00	0.2	0.3
2018/2/23 12:00	0.2	0.3
2018/3/2 12:00	0.2	0.3
2018/3/9 12:00	0.2	0.3
2018/3/16 12:00	0.2	0.3
2018/3/23 12:00	0.1	0.2
2018/3/30 12:00	0.2	0.2
2018/4/6 12:00	0.1	0.2
2018/4/13 12:00	0.2	0.3
2018/4/20 12:00	0.2	0.3
2018/4/27 12:00	0.2	0.3
2018/5/4 12:00	0.1	0.2
2018/5/11 12:00	0.2	0.2
2018/5/18 12:00	0.1	0.2
2018/5/25 12:00	0.1	0.2
2018/6/1 12:00	0.1	0.2
2018/6/8 12:00	0.1	0.2
2018/6/15 12:00	0.1	0.3
2018/6/22 12:00	0.2	0.3
2018/6/29 12:00	0.2	0.3
2018/7/6 12:00	0.2	0.3
2018/7/13 12:00	0.2	0.3
2018/7/20 12:00	0.2	0.3
2018/7/27 12:00	0.2	0.4
2018/8/3 12:00	0.2	0.3
2018/8/10 12:00	0.2	0.4
2018/8/17 12:00	0.2	0.4
2018/8/24 12:00	0.2	0.4
2018/8/31 12:00	0.3	0.5
2018/9/7 12:00	0.3	0.4
2018/9/14 12:00	0.3	0.5
2018/9/21 12:00	0.3	0.5
2018/9/28 12:00	0.3	0.4
2018/10/5 12:00	0.3	0.4
2018/10/12 12:00	0.3	0.4
2018/10/19 12:00	0.3	0.5
2018/10/26 12:00	0.3	0.5
2018/11/2 12:00	0.3	0.5
2018/11/9 12:00	0.3	0.6
2018/11/16 12:00	0.3	0.6
2018/11/23 12:00	0.4	0.6
2018/11/30 12:00	0.4	0.6
2018/12/7 12:00	0.4	0.6
2018/12/14 12:00	0.4	0.7
2018/12/21 12:00	0.4	0.7
2018/12/28 12:00	0.4	0.7
2019/1/4 12:00	0.4	0.7
2019/1/11 12:00	0.4	0.7
2019/1/18 12:00	0.4	0.8
2019/1/25 12:00	0.4	0.8
2019/2/1 12:00	0.5	0.8
2019/2/8 12:00	0.5	0.8
2019/2/15 12:00	0.5	0.9
2019/2/22 12:00	0.5	0.9
2019/3/1 12:00	0.5	0.9
2019/3/8 12:00	0.5	0.9
2019/3/15 12:00	0.5	0.9
2019/3/22 12:00	0.5	0.8
2019/3/29 12:00	0.5	0.9
2019/4/5 12:00	0.5	0.9
2019/4/12 12:00	0.5	0.9
2019/4/19 12:00	0.5	0.9
2019/4/26 12:00	0.5	0.9
2019/5/3 12:00	0.5	0.9
2019/5/10 12:00	0.4	0.8
2019/5/17 12:00	0.4	0.9
2019/5/24 12:00	0.4	0.8
2019/5/31 12:00	0.4	0.8
2019/6/7 12:00	0.4	0.8
2019/6/14 12:00	0.4	0.8
2019/6/21 12:00	0.4	0.8
2019/6/28 12:00	0.4	0.8
2019/7/5 12:00	0.4	0.8
2019/7/12 12:00	0.4	0.8
2019/7/19 12:00	0.4	0.8
2019/7/26 12:00	0.4	0.8
2019/8/2 12:00	0.4	0.8
2019/8/9 12:00	0.4	0.8
2019/8/16 12:00	0.4	0.8
2019/8/23 12:00	0.4	0.9
2019/8/30 12:00	0.4	0.9
2019/9/6 12:00	0.5	0.9
2019/9/13 12:00	0.5	0.9
2019/9/20 12:00	0.5	0.9
2019/9/27 12:00	0.5	0.9
2019/10/4 12:00	0.5	0.9
2019/10/11 12:00	0.5	0.9
2019/10/18 12:00	0.4	0.9
2019/10/25 12:00	0.4	0.8
2019/11/1 12:00	0.4	0.8
2019/11/8 12:00	0.4	0.8
2019/11/15 12:00	0.4	0.9
2019/11/22 12:00	0.5	0.9
2019/11/29 12:00	0.4	0.8
2019/12/6 12:00	0.4	0.9
2019/12/13 12:00	0.4	0.9
2019/12/20 12:00	0.5	0.9
2019/12/27 12:00	-	-
2020/1/3 12:00	-	-
2020/1/10 12:00	-	-
2020/1/17 12:00	-	-
2020/1/24 12:00	-	-
2020/1/31 12:00	-	-
2020/2/7 12:00	-	-

[沈下量]

事業区域名 計測地点名	6丁目(道路部)				
	6E.1 沈下量 (cm)	6E.2 沈下量 (cm)	6E.3 沈下量 (cm)	6E.4 沈下量 (cm)	6D.1(ポンプ部) 沈下量 (cm)
2017/11/25 12:00	0.0	0.0	0.0	0.0	0.0
2017/12/25 12:00	0.1	0.1	0.2	0.2	0.1
2018/1/5 12:00	0.1	0.1	0.3	0.2	0.2
2018/1/12 12:00	0.1	0.1	0.3	0.3	0.2
2018/1/19 12:00	0.2	0.2	0.4	0.3	0.2
2018/1/26 12:00	0.2	0.2	0.4	0.3	0.2
2018/2/2 12:00	0.2	0.2	0.4	0.3	0.2
2018/2/9 12:00	0.2	0.2	0.4	0.3	0.3
2018/2/16 12:00	0.2	0.2	0.4	0.3	0.2
2018/2/23 12:00	0.2	0.2	0.5	0.3	0.3
2018/3/2 12:00	0.2	0.2	0.4	0.3	0.3
2018/3/9 12:00	0.2	0.2	0.4	0.3	0.2
2018/3/16 12:00	0.2	0.2	0.3	0.2	0.2
2018/3/23 12:00	0.1	0.2	0.3	0.2	0.2
2018/3/30 12:00	0.1	0.2	0.3	0.2	0.2
2018/4/6 12:00	0.1	0.2	0.3	0.2	0.2
2018/4/13 12:00	0.1	0.2	0.4	0.2	0.2
2018/4/20 12:00	0.1	0.2	0.4	0.3	0.2
2018/4/27 12:00	0.2	0.2	0.4	0.2	0.2
2018/5/4 12:00	0.1	0.2	0.3	0.2	0.2
2018/5/11 12:00	0.2	0.2	0.3	0.1	0.2
2018/5/18 12:00	0.1	0.1	0.3	0.1	0.1
2018/5/25 12:00	0.1	0.2	0.3	0.1	0.1
2018/6/1 12:00	0.1	0.2	0.3	0.2	0.2
2018/6/8 12:00	0.1	0.2	0.3	0.2	0.2
2018/6/15 12:00	0.2	0.2	0.4	0.2	0.2
2018/6/22 12:00	0.2	0.2	0.4	0.2	0.2
2018/6/29 12:00	0.2	0.2	0.4	0.3	0.3
2018/7/6 12:00	0.2	0.2	0.4	0.3	0.3
2018/7/13 12:00	0.2	0.2	0.4	0.3	0.3
2018/7/20 12:00	0.2	0.3	0.4	0.3	0.3
2018/7/27 12:00	0.2	0.3	0.5	0.3	0.3
2018/8/3 12:00	0.2	0.3	0.5	0.3	0.3
2018/8/10 12:00	0.3	0.3	0.5	0.4	0.4
2018/8/17 12:00	0.3	0.3	0.6	0.4	0.4
2018/8/24 12:00	0.3	0.4	0.6	0.4	0.4
2018/8/31 12:00	0.3	0.4	0.7	0.5	0.5
2018/9/7 12:00	0.3	0.4	0.7	0.5	0.5
2018/9/14 12:00	0.3	0.4	0.7	0.5	0.5
2018/9/21 12:00	0.3	0.4	0.7	0.5	0.5
2018/9/28 12:00	0.3	0.4	0.6	0.4	0.5
2018/10/5 12:00	0.3	0.4	0.6	0.5	0.5
2018/10/12 12:00	0.3	0.4	0.6	0.5	0.5
2018/10/19 12:00	0.3	0.4	0.7	0.5	0.5
2018/10/26 12:00	0.3	0.4	0.7	0.6	0.5
2018/11/2 12:00	0.3	0.4	0.8	0.6	0.5
2018/11/9 12:00	0.3	0.4	0.8	0.6	0.6
2018/11/16 12:00	0.4	0.4	0.8	0.6	0.6
2018/11/23 12:00	0.4	0.5	0.9	0.7	0.6
2018/11/30 12:00	0.4	0.5	0.9	0.7	0.6
2018/12/7 12:00	0.4	0.5	0.9	0.7	0.6
2018/12/14 12:00	0.4	0.5	0.9	0.7	0.6
2018/12/21 12:00	0.4	0.5	1.0	0.7	0.6
2018/12/28 12:00	0.4	0.5	1.0	0.8	0.6
2019/1/4 12:00	0.4	0.5	1.0	0.8	0.7
2019/1/11 12:00	0.5	0.5	1.0	0.8	0.7
2019/1/18 12:00	0.5	0.6	1.1	0.8	0.7
2019/1/25 12:00	0.5	0.6	1.1	0.9	0.7
2019/2/1 12:00	0.5	0.6	1.1	0.9	0.7
2019/2/8 12:00	0.5	0.6	1.2	0.9	0.8
2019/2/15 12:00	0.5	0.6	1.2	1.0	0.8
2019/2/22 12:00	0.5	0.6	1.2	1.0	0.8
2019/3/1 12:00	0.5	0.7	1.3	1.0	0.8
2019/3/8 12:00	0.6	0.6	1.2	0.9	0.8
2019/3/15 12:00	0.5	0.6	1.1	0.9	0.8
2019/3/22 12:00	0.5	0.6	1.1	0.9	0.7
2019/3/29 12:00	0.5	0.6	1.1	0.9	0.8
2019/4/5 12:00	0.5	0.6	1.2	0.9	0.8
2019/4/12 12:00	0.5	0.6	1.2	0.9	0.8
2019/4/19 12:00	0.5	0.6	1.2	0.9	0.8
2019/4/26 12:00	0.5	0.6	1.2	1.0	0.8
2019/5/3 12:00	0.5	0.6	1.1	0.9	0.7
2019/5/10 12:00	0.5	0.6	1.1	0.8	0.7
2019/5/17 12:00	0.5	0.6	1.1	0.8	0.7
2019/5/24 12:00	0.5	0.6	1.1	0.8	0.7
2019/5/31 12:00	0.5	0.6	1.1	0.8	0.7
2019/6/7 12:00	0.5	0.6	1.1	0.8	0.7
2019/6/14 12:00	0.5	0.6	1.1	0.8	0.7
2019/6/21 12:00	0.5	0.6	1.1	0.8	0.7
2019/6/28 12:00	0.5	0.6	1.1	0.8	0.7
2019/7/5 12:00	0.5	0.6	1.1	0.8	0.7
2019/7/12 12:00	0.5	0.6	1.1	0.9	0.7
2019/7/19 12:00	0.5	0.6	1.1	0.9	0.7
2019/7/26 12:00	0.5	0.6	1.1	0.9	0.7
2019/8/2 12:00	0.5	0.6	1.1	0.9	0.7
2019/8/9 12:00	0.5	0.6	1.1	0.9	0.7
2019/8/16 12:00	0.5	0.6	1.2	0.9	0.7
2019/8/23 12:00	0.5	0.6	1.2	0.9	0.8
2019/8/30 12:00	0.5	0.6	1.2	0.9	0.8
2019/9/6 12:00	0.5	0.7	1.3	1.0	0.8
2019/9/13 12:00	0.5	0.7	1.2	0.9	0.8
2019/9/20 12:00	0.5	0.7	1.3	1.0	0.8
2019/9/27 12:00	0.5	0.7	1.3	1.0	0.8
2019/10/4 12:00	0.5	0.7	1.3	1.0	0.8
2019/10/11 12:00	0.6	0.7	1.4	1.1	0.9
2019/10/18 12:00	0.5	0.6	1.2	0.9	0.8
2019/10/25 12:00	0.5	0.6	1.1	0.9	0.8
2019/11/1 12:00	0.5	0.6	1.1	0.9	0.7
2019/11/8 12:00	0.5	0.6	1.2	0.9	0.8
2019/11/15 12:00	0.5	0.6	1.2	1.0	0.8
2019/11/22 12:00	0.5	0.7	1.3	1.0	0.8
2019/11/29 12:00	0.5	0.6	1.2	0.9	0.8
2019/12/6 12:00	0.5	0.6	1.2	1.0	0.8
2019/12/13 12:00	0.5	0.6	1.3	1.0	0.8
2019/12/20 12:00	0.5	0.6	1.3	1.0	0.8
2019/12/27 12:00	0.5	-	1.3	1.0	0.8
2020/1/3 12:00	0.5	-	1.3	1.0	0.9
2020/1/10 12:00	0.6	-	1.4	0.0	0.9
2020/1/17 12:00	0.6	-	1.4	0.0	0.9
2020/1/24 12:00	0.6	-	1.4	0.0	0.9
2020/1/31 12:00	0.5	-	1.4	0.0	0.9
2020/2/7 12:00	0.6	-	1.4	0.0	0.9

[地下水位]		7・12丁目(民地部)			
事業区域名	計測地点名				
	7F_1		7F_2		
計測地点地盤高 (T.P.m)	9.31		8.50		
計測日	地下水位 (T.P.m)	地下水位 (G.L.m)	地下水位 (T.P.m)	地下水位 (G.L.m)	
2017/11/25 12:00	7.75	-1.556	7.23	-1.266	
2017/12/25 12:00	7.41	-1.896	6.78	-1.718	
2018/1/5 12:00	7.31	-1.996	6.69	-1.806	
2018/1/12 12:00	7.27	-2.042	6.65	-1.846	
2018/1/19 12:00	7.24	-2.068	6.66	-1.844	
2018/1/26 12:00	7.24	-2.071	6.70	-1.802	
2018/2/2 12:00	7.17	-2.135	6.65	-1.850	
2018/2/9 12:00	7.17	-2.145	6.66	-1.839	
2018/2/16 12:00	7.17	-2.135	6.69	-1.814	
2018/2/23 12:00	7.15	-2.164	6.65	-1.849	
2018/3/2 12:00	7.20	-2.109	6.72	-1.781	
2018/3/9 12:00	7.23	-2.081	6.82	-1.682	
2018/3/16 12:00	7.38	-1.930	7.06	-1.442	
2018/3/23 12:00	7.49	-1.825	7.20	-1.296	
2018/3/30 12:00	7.51	-1.800	7.14	-1.358	
2018/4/6 12:00	7.52	-1.787	7.14	-1.357	
2018/4/13 12:00	7.49	-1.822	7.08	-1.419	
2018/4/20 12:00	7.46	-1.850	7.08	-1.415	
2018/4/27 12:00	7.49	-1.820	7.18	-1.318	
2018/5/4 12:00	7.54	-1.775	7.21	-1.288	
2018/5/11 12:00	7.51	-1.800	7.21	-1.293	
2018/5/18 12:00	7.64	-1.666	7.29	-1.207	
2018/5/25 12:00	7.65	-1.660	7.23	-1.269	
2018/6/1 12:00	7.64	-1.672	7.18	-1.318	
2018/6/8 12:00	7.61	-1.698	7.10	-1.397	
2018/6/15 12:00	7.62	-1.694	7.10	-1.403	
2018/6/22 12:00	7.62	-1.686	7.11	-1.391	
2018/6/29 12:00	7.61	-1.700	7.02	-1.480	
2018/7/6 12:00	7.58	-1.728	6.96	-1.537	
2018/7/13 12:00	7.56	-1.751	6.98	-1.516	
2018/7/20 12:00	7.55	-1.764	6.92	-1.583	
2018/7/27 12:00	7.52	-1.788	6.88	-1.616	
2018/8/3 12:00	7.55	-1.780	6.94	-1.565	
2018/8/10 12:00	7.54	-1.766	6.85	-1.651	
2018/8/17 12:00	7.50	-1.814	6.77	-1.728	
2018/8/24 12:00	7.45	-1.857	6.67	-1.828	
2018/8/31 12:00	7.42	-1.888	6.60	-1.898	
2018/9/7 12:00	7.46	-1.847	6.80	-1.704	
2018/9/14 12:00	7.46	-1.847	6.82	-1.682	
2018/9/21 12:00	7.53	-1.779	6.90	-1.602	
2018/9/28 12:00	7.69	-1.620	7.10	-1.401	
2018/10/5 12:00	7.86	-1.450	7.05	-1.449	
2018/10/12 12:00	7.84	-1.474	6.89	-1.611	
2018/10/19 12:00	7.74	-1.566	6.79	-1.714	
2018/10/26 12:00	7.65	-1.657	6.70	-1.798	
2018/11/2 12:00	7.57	-1.744	6.62	-1.882	
2018/11/9 12:00	7.52	-1.794	6.62	-1.882	
2018/11/16 12:00	7.45	-1.856	6.54	-1.957	
2018/11/23 12:00	7.42	-1.895	6.49	-2.008	
2018/11/30 12:00	7.36	-1.947	6.43	-2.072	
2018/12/7 12:00	7.34	-1.969	6.40	-2.096	
2018/12/14 12:00	7.31	-2.003	6.41	-2.089	
2018/12/21 12:00	7.27	-2.038	6.37	-2.132	
2018/12/28 12:00	7.31	-2.003	6.33	-2.170	
2019/1/4 12:00	7.30	-2.011	6.24	-2.258	
2019/1/11 12:00	7.33	-1.980	6.24	-2.258	
2019/1/18 12:00	7.32	-1.992	6.22	-2.282	
2019/1/25 12:00	7.30	-2.006	6.18	-2.315	
2019/2/1 12:00	7.31	-2.003	6.21	-2.294	
2019/2/8 12:00	7.24	-2.069	6.25	-2.255	
2019/2/15 12:00	7.39	-1.920	6.22	-2.284	
2019/2/22 12:00	7.28	-2.030	6.23	-2.268	
2019/3/1 12:00	7.35	-1.959	2.57	-5.934	
2019/3/8 12:00	7.58	-1.734	3.88	-4.617	
2019/3/15 12:00	7.08	-2.231	6.44	-2.061	
2019/3/22 12:00	7.22	-2.094	6.54	-1.955	
2019/3/29 12:00	7.18	-2.125	6.42	-2.080	
2019/4/5 12:00	7.18	-2.128	6.40	-2.095	
2019/4/12 12:00	7.16	-2.149	6.38	-2.124	
2019/4/19 12:00	7.18	-2.135	6.42	-2.081	
2019/4/26 12:00	7.18	-2.128	6.41	-2.092	
2019/5/3 12:00	7.19	-2.119	6.49	-2.007	
2019/5/10 12:00	7.24	-2.072	6.52	-1.979	
2019/5/17 12:00	7.21	-2.095	6.45	-2.049	
2019/5/24 12:00	7.29	-2.018	6.65	-1.849	
2019/5/31 12:00	7.31	-1.999	6.59	-1.907	
2019/6/7 12:00	7.30	-2.014	6.52	-1.978	
2019/6/14 12:00	7.34	-1.965	6.70	-1.801	
2019/6/21 12:00	7.48	-1.826	6.81	-1.694	
2019/6/28 12:00	7.63	-1.682	6.93	-1.571	
2019/7/5 12:00	7.64	-1.671	6.92	-1.576	
2019/7/12 12:00	7.64	-1.674	6.80	-1.702	
2019/7/19 12:00	7.71	-1.599	6.93	-1.569	
2019/7/26 12:00	7.68	-1.635	6.78	-1.718	
2019/8/2 12:00	7.60	-1.706	6.69	-1.805	
2019/8/9 12:00	7.56	-1.755	6.61	-1.891	
2019/8/16 12:00	7.54	-1.768	6.58	-1.916	
2019/8/23 12:00	7.46	-1.847	6.53	-1.974	
2019/8/30 12:00	7.48	-1.831	6.62	-1.883	
2019/9/6 12:00	7.41	-1.899	6.54	-1.962	
2019/9/13 12:00	7.51	-1.798	6.73	-1.767	
2019/9/20 12:00	7.52	-1.786	6.65	-1.853	
2019/9/27 12:00	7.46	-1.852	6.59	-1.910	
2019/10/4 12:00	7.47	-1.841	6.55	-1.954	
2019/10/11 12:00	7.39	-1.918	6.46	-2.043	
2019/10/18 12:00	7.70	-1.614	7.04	-1.457	
2019/10/25 12:00	7.87	-1.439	7.02	-1.480	
2019/11/1 12:00	7.89	-1.418	6.89	-1.607	
2019/11/8 12:00	7.73	-1.579	6.68	-1.821	
2019/11/15 12:00	7.59	-1.718	6.54	-1.960	
2019/11/22 12:00	7.43	-1.875	6.42	-2.084	
2019/11/29 12:00	7.66	-1.647	6.71	-1.792	
2019/12/6 12:00	7.58	-1.728	6.56	-1.941	
2019/12/13 12:00	7.47	-1.837	6.45	-2.047	
2019/12/20 12:00	7.40	-1.914	6.41	-2.088	
2019/12/27 12:00	7.37	-1.938	6.46	-2.037	
2020/1/3 12:00	7.25	-2.062	6.37	-2.134	
2020/1/10 12:00	7.24	-2.068	6.33	-2.167	
2020/1/17 12:00	7.18	-2.129	6.29	-2.214	
2020/1/24 12:00	7.14	-2.172	6.26	-2.241	
2020/1/31 12:00	7.24	-2.068	6.47	-2.034	
2020/2/7 12:00	7.26	-2.048	6.36	-2.140	
1段階目水位 2018/2/24まで	7.19	-2.12	7.19	-1.31	
2段階目水位 2018/5/24まで	7.15	-2.17	7.15	-1.36	
最終水位 2018/8/24まで	7.10	-2.21	7.10	-1.40	

[地下水位]

事業区域名	7*12丁目(道路部)					
	7E_1		7E_3		7E_4	
計測地点名						
計測地点地盤高(T.P.m)	8.88		9.11		8.92	
計測日	地下水位(T.P.m)	地下水位(G.Lm)	地下水位(T.P.m)	地下水位(G.Lm)	地下水位(T.P.m)	地下水位(G.Lm)
2017/11/25 12:00	6.95	-1.934	7.31	-1.801	7.28	-1.640
2017/12/25 12:00	6.37	-2.511	6.74	-2.370	6.71	-2.212
2018/1/5 12:00	6.38	-2.501	6.74	-2.367	6.71	-2.211
2018/1/12 12:00	6.37	-2.510	6.73	-2.380	6.70	-2.221
2018/1/19 12:00	6.35	-2.534	6.70	-2.405	6.67	-2.246
2018/1/26 12:00	6.40	-2.480	6.76	-2.352	6.73	-2.194
2018/2/2 12:00	6.41	-2.474	6.76	-2.348	6.73	-2.191
2018/2/9 12:00	6.41	-2.471	6.77	-2.343	6.73	-2.187
2018/2/16 12:00	6.38	-2.496	6.74	-2.369	6.70	-2.217
2018/2/23 12:00	6.34	-2.542	6.69	-2.418	6.66	-2.263
2018/3/2 12:00	6.41	-2.469	6.76	-2.351	6.73	-2.191
2018/3/9 12:00	6.77	-2.114	7.11	-2.003	7.08	-1.838
2018/3/16 12:00	6.90	-1.979	7.25	-1.864	7.21	-1.708
2018/3/23 12:00	7.07	-1.812	7.41	-1.695	7.37	-1.546
2018/3/30 12:00	6.90	-1.984	7.24	-1.875	7.20	-1.717
2018/4/6 12:00	6.88	-1.996	7.22	-1.889	7.19	-1.728
2018/4/13 12:00	6.84	-2.038	7.18	-1.930	7.15	-1.770
2018/4/20 12:00	6.85	-2.030	7.19	-1.918	7.16	-1.757
2018/4/27 12:00	6.94	-1.935	7.29	-1.821	7.26	-1.661
2018/5/4 12:00	6.89	-1.985	7.24	-1.869	7.21	-1.708
2018/5/11 12:00	6.98	-1.900	7.33	-1.785	7.29	-1.626
2018/5/18 12:00	6.96	-1.921	7.31	-1.804	7.28	-1.643
2018/5/25 12:00	6.84	-2.038	7.19	-1.925	7.16	-1.761
2018/6/1 12:00	6.56	-2.317	6.91	-2.200	6.88	-2.038
2018/6/8 12:00	6.61	-2.270	6.96	-2.151	6.93	-1.989
2018/6/15 12:00	6.42	-2.458	6.77	-2.339	6.74	-2.178
2018/6/22 12:00	6.41	-2.467	6.76	-2.346	6.73	-2.187
2018/6/29 12:00	6.42	-2.462	6.77	-2.336	6.74	-2.177
2018/7/6 12:00	6.41	-2.465	6.77	-2.338	6.71	-2.211
2018/7/13 12:00	6.41	-2.468	6.77	-2.337	6.74	-2.182
2018/7/20 12:00	6.40	-2.479	6.76	-2.349	6.73	-2.194
2018/7/27 12:00	6.40	-2.482	6.76	-2.349	6.72	-2.196
2018/8/3 12:00	6.07	-2.813	6.41	-2.702	6.29	-2.628
2018/8/10 12:00	6.04	-2.837	6.41	-2.702	6.30	-2.622
2018/8/17 12:00	5.84	-3.041	6.41	-2.696	6.28	-2.636
2018/8/24 12:00	5.81	-3.072	6.41	-2.699	6.27	-2.648
2018/8/31 12:00	5.82	-3.064	6.42	-2.695	6.26	-2.657
2018/9/7 12:00	6.04	-2.836	6.42	-2.693	6.27	-2.649
2018/9/14 12:00	6.05	-2.830	6.42	-2.687	6.27	-2.649
2018/9/21 12:00	6.11	-2.772	6.43	-2.681	6.27	-2.648
2018/9/28 12:00	6.11	-2.765	6.43	-2.682	6.28	-2.643
2018/10/5 12:00	6.10	-2.776	6.43	-2.679	6.27	-2.647
2018/10/12 12:00	6.07	-2.808	6.43	-2.684	6.27	-2.648
2018/10/19 12:00	6.05	-2.835	6.42	-2.686	6.27	-2.648
2018/10/26 12:00	5.95	-2.929	6.43	-2.683	6.27	-2.647
2018/11/2 12:00	5.96	-2.924	6.43	-2.681	6.26	-2.655
2018/11/9 12:00	5.97	-2.912	6.43	-2.680	6.26	-2.658
2018/11/16 12:00	5.96	-2.923	6.43	-2.680	6.26	-2.655
2018/11/23 12:00	5.96	-2.920	6.43	-2.680	6.26	-2.655
2018/11/30 12:00	5.96	-2.918	6.43	-2.681	6.26	-2.658
2018/12/7 12:00	5.97	-2.914	6.42	-2.685	6.26	-2.658
2018/12/14 12:00	6.00	-2.883	6.43	-2.681	6.27	-2.647
2018/12/21 12:00	5.98	-2.902	6.43	-2.680	6.27	-2.648
2018/12/28 12:00	5.98	-2.899	6.43	-2.680	6.27	-2.648
2019/1/4 12:00	5.99	-2.891	6.43	-2.680	6.27	-2.647
2019/1/11 12:00	5.99	-2.890	6.43	-2.678	6.27	-2.647
2019/1/18 12:00	5.99	-2.889	6.43	-2.679	6.27	-2.649
2019/1/25 12:00	5.99	-2.889	6.43	-2.678	6.27	-2.650
2019/2/1 12:00	5.99	-2.889	6.43	-2.679	6.27	-2.646
2019/2/8 12:00	5.99	-2.890	6.43	-2.679	6.27	-2.650
2019/2/15 12:00	5.99	-2.886	6.43	-2.680	6.27	-2.648
2019/2/22 12:00	5.99	-2.890	6.43	-2.680	6.27	-2.651
2019/3/1 12:00	5.97	-2.909	6.43	-2.680	6.28	-2.638
2019/3/8 12:00	6.05	-2.833	6.44	-2.669	6.28	-2.636
2019/3/15 12:00	6.09	-2.787	6.45	-2.663	6.28	-2.636
2019/3/22 12:00	5.98	-2.902	6.43	-2.681	6.28	-2.640
2019/3/29 12:00	5.98	-2.900	6.43	-2.684	6.28	-2.645
2019/4/5 12:00	5.99	-2.891	6.42	-2.686	6.27	-2.646
2019/4/12 12:00	5.98	-2.899	6.43	-2.683	6.28	-2.640
2019/4/19 12:00	5.96	-2.918	6.42	-2.686	6.27	-2.647
2019/4/26 12:00	5.85	-3.026	6.42	-2.687	6.27	-2.648
2019/5/3 12:00	5.97	-2.914	6.42	-2.687	6.28	-2.645
2019/5/10 12:00	5.79	-3.090	6.42	-2.690	6.27	-2.647
2019/5/17 12:00	5.79	-3.086	6.42	-2.693	6.27	-2.653
2019/5/24 12:00	6.00	-2.881	6.42	-2.684	6.27	-2.650
2019/5/31 12:00	5.75	-3.129	6.41	-2.697	6.26	-2.655
2019/6/7 12:00	5.76	-3.120	6.41	-2.699	6.26	-2.660
2019/6/14 12:00	6.02	-2.860	6.41	-2.697	6.27	-2.649
2019/6/21 12:00	6.06	-2.815	6.42	-2.695	6.27	-2.650
2019/6/28 12:00	6.10	-2.783	6.41	-2.696	6.27	-2.650
2019/7/5 12:00	6.12	-2.759	6.42	-2.694	6.27	-2.650
2019/7/12 12:00	6.08	-2.795	6.41	-2.698	6.27	-2.653
2019/7/19 12:00	6.12	-2.761	6.42	-2.695	6.27	-2.648
2019/7/26 12:00	6.06	-2.820	6.41	-2.699	6.27	-2.650
2019/8/2 12:00	5.96	-2.918	6.41	-2.700	6.27	-2.653
2019/8/9 12:00	5.76	-3.122	6.40	-2.705	6.26	-2.660
2019/8/16 12:00	5.88	-3.003	6.40	-2.706	6.25	-2.665
2019/8/23 12:00	5.94	-2.939	6.40	-2.709	6.26	-2.664
2019/8/30 12:00	6.00	-2.878	6.40	-2.708	6.25	-2.665
2019/9/6 12:00	5.74	-3.137	6.40	-2.709	6.26	-2.660
2019/9/13 12:00	6.07	-2.813	6.40	-2.705	6.24	-2.677
2019/9/20 12:00	5.98	-2.897	6.40	-2.708	6.25	-2.672
2019/9/27 12:00	5.97	-2.910	6.40	-2.707	6.25	-2.675
2019/10/4 12:00	5.98	-2.901	6.40	-2.707	6.25	-2.670
2019/10/11 12:00	5.93	-2.947	6.40	-2.706	6.25	-2.670
2019/10/18 12:00	6.11	-2.769	6.41	-2.701	6.24	-2.676
2019/10/25 12:00	6.15	-2.730	6.44	-2.666	6.26	-2.663
2019/11/1 12:00	6.12	-2.762	6.42	-2.691	6.25	-2.667
2019/11/8 12:00	6.09	-2.791	6.42	-2.691	6.25	-2.667
2019/11/15 12:00	6.05	-2.829	6.42	-2.690	6.25	-2.666
2019/11/22 12:00	6.07	-2.813	6.42	-2.689	6.27	-2.653
2019/11/29 12:00	6.11	-2.769	6.43	-2.681	6.27	-2.650
2019/12/6 12:00	6.09	-2.789	6.43	-2.682	6.27	-2.647
2019/12/13 12:00	6.08	-2.797	6.43	-2.681	6.27	-2.647
2019/12/20 12:00	6.07	-2.814	6.43	-2.679	6.28	-2.638
2019/12/27 12:00	6.13	-2.749	6.44	-2.674	6.29	-2.630
2020/1/3 12:00	6.12	-2.764	6.44	-2.674	6.29	-2.634
2020/1/10 12:00	6.10	-2.780	6.44	-2.672	6.29	-2.634
2020/1/17 12:00	6.08	-2.801	6.44	-2.670	6.29	-2.634
2020/1/24 12:00	6.04	-2.843	6.44	-2.668	6.29	-2.632
2020/1/31 12:00	6.12	-2.760	6.44	-2.667	6.29	-2.628
2020/2/7 12:00	6.10	-2.777	6.44	-2.670	6.29	-2.629

※7E_2は欠番

[沈下量]

事業区域名	7・12丁目(民地部)	
	7F.1	7F.2
計測地点名	沈下量 (cm)	沈下量 (cm)
計測日		
2017/11/25 12:00	0.0	0.0
2017/12/25 12:00	0.2	0.1
2018/1/5 12:00	0.2	0.1
2018/1/12 12:00	0.3	0.1
2018/1/19 12:00	0.3	0.1
2018/1/26 12:00	0.3	0.1
2018/2/2 12:00	0.4	0.2
2018/2/9 12:00	0.4	0.2
2018/2/16 12:00	0.4	0.2
2018/2/23 12:00	0.4	0.2
2018/3/2 12:00	0.4	0.2
2018/3/9 12:00	0.4	0.2
2018/3/16 12:00	0.4	0.2
2018/3/23 12:00	0.3	0.2
2018/3/30 12:00	0.4	0.2
2018/4/6 12:00	0.3	0.2
2018/4/13 12:00	0.4	0.2
2018/4/20 12:00	0.4	0.2
2018/4/27 12:00	0.4	0.2
2018/5/4 12:00	0.3	0.2
2018/5/11 12:00	0.3	0.2
2018/5/18 12:00	0.3	0.2
2018/5/25 12:00	0.3	0.2
2018/6/1 12:00	0.3	0.2
2018/6/8 12:00	0.3	0.2
2018/6/15 12:00	0.3	0.2
2018/6/22 12:00	0.3	0.2
2018/6/29 12:00	0.4	0.2
2018/7/6 12:00	0.4	0.3
2018/7/13 12:00	0.4	0.3
2018/7/20 12:00	0.4	0.3
2018/7/27 12:00	0.4	0.3
2018/8/3 12:00	0.4	0.4
2018/8/10 12:00	0.5	0.4
2018/8/17 12:00	0.5	0.4
2018/8/24 12:00	0.6	0.5
2018/8/31 12:00	0.7	0.5
2018/9/7 12:00	0.7	0.5
2018/9/14 12:00	0.7	0.5
2018/9/21 12:00	0.7	0.5
2018/9/28 12:00	0.6	0.5
2018/10/5 12:00	0.6	0.5
2018/10/12 12:00	0.6	0.5
2018/10/19 12:00	0.6	0.5
2018/10/26 12:00	0.7	0.5
2018/11/2 12:00	0.7	0.5
2018/11/9 12:00	0.7	0.5
2018/11/16 12:00	0.7	0.5
2018/11/23 12:00	0.7	0.5
2018/11/30 12:00	0.8	0.5
2018/12/7 12:00	0.8	0.6
2018/12/14 12:00	0.8	0.6
2018/12/21 12:00	0.8	0.6
2018/12/28 12:00	0.8	0.6
2019/1/4 12:00	0.9	0.6
2019/1/11 12:00	0.9	0.6
2019/1/18 12:00	0.9	0.7
2019/1/25 12:00	0.9	0.7
2019/2/1 12:00	1.0	0.7
2019/2/8 12:00	1.0	0.7
2019/2/15 12:00	1.0	0.7
2019/2/22 12:00	1.0	0.7
2019/3/1 12:00	1.1	0.8
2019/3/8 12:00	1.0	0.8
2019/3/15 12:00	1.0	0.7
2019/3/22 12:00	1.0	0.7
2019/3/29 12:00	1.0	0.7
2019/4/5 12:00	1.0	0.7
2019/4/12 12:00	1.0	0.7
2019/4/19 12:00	1.0	0.7
2019/4/26 12:00	1.0	0.8
2019/5/3 12:00	1.0	0.8
2019/5/10 12:00	0.9	0.8
2019/5/17 12:00	1.0	0.8
2019/5/24 12:00	0.9	0.8
2019/5/31 12:00	0.9	0.8
2019/6/7 12:00	0.9	0.8
2019/6/14 12:00	0.9	0.8
2019/6/21 12:00	0.9	0.8
2019/6/28 12:00	0.9	0.8
2019/7/5 12:00	0.9	0.8
2019/7/12 12:00	0.9	0.8
2019/7/19 12:00	0.9	0.8
2019/7/26 12:00	0.9	0.8
2019/8/2 12:00	0.9	0.8
2019/8/9 12:00	0.9	0.8
2019/8/16 12:00	0.9	0.8
2019/8/23 12:00	0.9	0.8
2019/8/30 12:00	0.9	0.8
2019/9/6 12:00	1.0	0.9
2019/9/13 12:00	0.9	0.9
2019/9/20 12:00	1.0	0.8
2019/9/27 12:00	1.0	0.9
2019/10/4 12:00	1.0	0.8
2019/10/11 12:00	1.0	0.9
2019/10/18 12:00	0.9	0.8
2019/10/25 12:00	0.8	0.8
2019/11/1 12:00	0.8	0.8
2019/11/8 12:00	0.9	0.8
2019/11/15 12:00	0.9	0.8
2019/11/22 12:00	1.0	0.8
2019/11/29 12:00	0.9	0.8
2019/12/6 12:00	0.9	0.8
2019/12/13 12:00	0.9	0.8
2019/12/20 12:00	1.0	0.8
2019/12/27 12:00	1.0	0.8
2020/1/3 12:00	1.0	0.8
2020/1/10 12:00	1.0	0.8
2020/1/17 12:00	1.1	0.8
2020/1/24 12:00	1.1	0.8
2020/1/31 12:00	1.1	0.8
2020/2/7 12:00	1.1	0.9

[沈下量]

事業区域名	7・12丁目(道路部)			
	7E_1	7E_3	7E_4	7D_1(ポンプ部)
計測地点名	7E_1	7E_3	7E_4	7D_1(ポンプ部)
計測日	沈下量 (cm)	沈下量 (cm)	沈下量 (cm)	沈下量 (cm)
2017/11/25 12:00	0.0	0.0	0.0	0.0
2017/12/25 12:00	0.1	0.2	0.2	0.1
2018/1/5 12:00	0.1	0.2	0.3	0.1
2018/1/12 12:00	0.1	0.3	0.3	0.2
2018/1/19 12:00	0.1	0.3	0.3	0.2
2018/1/26 12:00	0.1	0.3	0.3	0.2
2018/2/2 12:00	0.1	0.4	0.4	0.2
2018/2/9 12:00	0.2	0.4	0.4	0.2
2018/2/16 12:00	0.2	0.4	0.4	0.2
2018/2/23 12:00	0.2	0.4	0.4	0.2
2018/3/2 12:00	0.2	0.4	0.4	0.3
2018/3/9 12:00	0.2	0.4	0.4	0.3
2018/3/16 12:00	0.2	0.4	0.3	0.2
2018/3/23 12:00	0.2	0.4	0.3	0.2
2018/3/30 12:00	0.2	0.4	0.3	0.2
2018/4/6 12:00	0.2	0.3	0.3	0.2
2018/4/13 12:00	0.2	0.4	0.3	0.2
2018/4/20 12:00	0.2	0.4	0.3	0.2
2018/4/27 12:00	0.2	0.4	0.3	0.2
2018/5/4 12:00	0.2	0.3	0.3	0.2
2018/5/11 12:00	0.2	0.4	0.3	0.2
2018/5/18 12:00	0.2	0.3	0.2	0.2
2018/5/25 12:00	0.2	0.3	0.2	0.2
2018/6/1 12:00	0.2	0.3	0.3	0.3
2018/6/8 12:00	0.2	0.4	0.3	0.3
2018/6/15 12:00	0.2	0.4	0.3	0.3
2018/6/22 12:00	0.2	0.4	0.3	0.3
2018/6/29 12:00	0.3	0.4	0.4	0.3
2018/7/6 12:00	0.3	0.4	0.4	0.4
2018/7/13 12:00	0.3	0.4	0.4	0.4
2018/7/20 12:00	0.3	0.5	0.4	0.4
2018/7/27 12:00	0.4	0.5	0.4	0.4
2018/8/3 12:00	0.4	0.5	0.4	0.5
2018/8/10 12:00	0.4	0.5	0.5	0.5
2018/8/17 12:00	0.4	0.5	0.5	0.5
2018/8/24 12:00	0.5	0.6	0.6	0.6
2018/8/31 12:00	0.5	0.6	0.6	0.6
2018/9/7 12:00	0.5	0.6	0.6	0.6
2018/9/14 12:00	0.5	0.6	0.6	0.6
2018/9/21 12:00	0.5	0.6	0.6	0.6
2018/9/28 12:00	0.5	0.6	0.6	0.6
2018/10/5 12:00	0.5	0.5	0.6	0.6
2018/10/12 12:00	0.5	0.6	0.6	0.6
2018/10/19 12:00	0.5	0.6	0.6	0.6
2018/10/26 12:00	0.5	0.6	0.7	0.6
2018/11/2 12:00	0.5	0.6	0.7	0.6
2018/11/9 12:00	0.5	0.7	0.7	0.6
2018/11/16 12:00	0.5	0.7	0.7	0.6
2018/11/23 12:00	0.5	0.7	0.7	0.6
2018/11/30 12:00	0.5	0.7	0.8	0.6
2018/12/7 12:00	0.5	0.7	0.8	0.6
2018/12/14 12:00	0.6	0.8	0.8	0.7
2018/12/21 12:00	0.6	0.8	0.8	0.7
2018/12/28 12:00	0.6	0.8	0.8	0.7
2019/1/4 12:00	0.6	0.8	0.9	0.7
2019/1/11 12:00	0.6	0.8	0.9	0.7
2019/1/18 12:00	0.6	0.8	0.9	0.7
2019/1/25 12:00	0.6	0.9	1.0	0.8
2019/2/1 12:00	0.6	0.9	1.0	0.8
2019/2/8 12:00	0.7	0.9	1.0	0.8
2019/2/15 12:00	0.7	1.0	1.0	0.8
2019/2/22 12:00	0.7	1.0	1.1	0.8
2019/3/1 12:00	0.7	1.0	1.1	0.8
2019/3/8 12:00	0.7	1.0	1.0	0.8
2019/3/15 12:00	0.7	0.9	1.0	0.8
2019/3/22 12:00	0.7	0.9	1.0	0.8
2019/3/29 12:00	0.7	0.9	1.0	0.8
2019/4/5 12:00	0.7	0.9	1.0	0.8
2019/4/12 12:00	0.7	1.0	1.0	0.8
2019/4/19 12:00	0.7	0.9	1.0	0.8
2019/4/26 12:00	0.7	1.0	1.0	0.8
2019/5/3 12:00	0.7	0.9	1.0	0.9
2019/5/10 12:00	0.7	0.9	0.9	0.9
2019/5/17 12:00	0.8	0.9	0.9	0.9
2019/5/24 12:00	0.7	0.9	0.9	0.9
2019/5/31 12:00	0.8	0.9	0.9	0.9
2019/6/7 12:00	0.8	0.9	0.9	0.9
2019/6/14 12:00	0.8	0.9	0.9	0.9
2019/6/21 12:00	0.8	0.9	0.9	0.9
2019/6/28 12:00	0.7	0.8	0.9	0.9
2019/7/5 12:00	0.7	0.9	0.9	0.9
2019/7/12 12:00	0.7	0.9	0.9	0.9
2019/7/19 12:00	0.7	0.9	0.9	0.9
2019/7/26 12:00	0.8	0.9	1.0	0.9
2019/8/2 12:00	0.8	0.9	1.0	0.9
2019/8/9 12:00	0.8	0.9	1.0	0.9
2019/8/16 12:00	0.8	0.9	1.0	0.9
2019/8/23 12:00	0.8	0.9	1.0	0.9
2019/8/30 12:00	0.8	0.9	1.0	1.0
2019/9/6 12:00	0.8	1.0	1.1	1.0
2019/9/13 12:00	0.8	1.0	1.0	1.0
2019/9/20 12:00	0.8	1.0	1.0	1.0
2019/9/27 12:00	0.8	1.0	1.1	1.0
2019/10/4 12:00	0.8	1.0	1.1	0.9
2019/10/11 12:00	0.8	1.0	1.1	1.0
2019/10/18 12:00	0.8	0.9	1.0	0.9
2019/10/25 12:00	0.8	0.9	1.0	0.9
2019/11/1 12:00	0.8	0.9	1.0	0.9
2019/11/8 12:00	0.8	0.9	1.0	0.9
2019/11/15 12:00	0.8	0.9	1.1	0.9
2019/11/22 12:00	0.8	1.0	1.1	0.9
2019/11/29 12:00	0.8	0.9	1.0	0.9
2019/12/6 12:00	0.8	0.9	1.1	0.9
2019/12/13 12:00	0.8	1.0	1.1	0.9
2019/12/20 12:00	0.8	1.0	1.1	0.9
2019/12/27 12:00	0.8	1.0	1.1	0.9
2020/1/3 12:00	0.8	1.0	1.2	0.9
2020/1/10 12:00	0.8	1.0	1.2	0.9
2020/1/17 12:00	0.8	1.1	1.2	0.9
2020/1/24 12:00	0.8	1.1	1.2	0.9
2020/1/31 12:00	0.8	1.0	1.2	0.9
2020/2/7 12:00	0.8	1.1	1.2	0.9

※7E_2は欠番

[地下水位]		
事業区域名	8丁目(民地部)	
計測地点名	8F-1	
計測地点地盤高 (T.P.m)	9.30	
計測日	地下水位 (T.P.m)	地下水位 (G.L.m)
2017/11/25 12:00	8.09	-1.211
2017/12/25 12:00	7.71	-1.589
2018/1/5 12:00	7.57	-1.728
2018/1/12 12:00	7.52	-1.782
2018/1/19 12:00	7.51	-1.790
2018/1/26 12:00	7.56	-1.740
2018/2/2 12:00	7.44	-1.859
2018/2/9 12:00	7.53	-1.765
2018/2/16 12:00	7.63	-1.666
2018/2/23 12:00	7.61	-1.694
2018/3/2 12:00	7.97	-1.327
2018/3/9 12:00	9.25	-0.049
2018/3/16 12:00	8.19	-1.105
2018/3/23 12:00	8.69	-0.613
2018/3/30 12:00	8.10	-1.202
2018/4/6 12:00	8.08	-1.221
2018/4/13 12:00	7.92	-1.379
2018/4/20 12:00	7.89	-1.408
2018/4/27 12:00	7.99	-1.309
2018/5/4 12:00	7.98	-1.317
2018/5/11 12:00	8.20	-1.099
2018/5/18 12:00	8.25	-1.049
2018/5/25 12:00	8.09	-1.208
2018/6/1 12:00	7.98	-1.319
2018/6/8 12:00	7.96	-1.343
2018/6/15 12:00	7.90	-1.400
2018/6/22 12:00	7.98	-1.316
2018/6/29 12:00	7.92	-1.382
2018/7/6 12:00	7.86	-1.440
2018/7/13 12:00	7.84	-1.459
2018/7/20 12:00	7.79	-1.515
2018/7/27 12:00	7.74	-1.562
2018/8/3 12:00	7.69	-1.614
2018/8/10 12:00	7.62	-1.680
2018/8/17 12:00	7.53	-1.765
2018/8/24 12:00	7.49	-1.812
2018/8/31 12:00	7.42	-1.875
2018/9/7 12:00	7.50	-1.796
2018/9/14 12:00	7.74	-1.559
2018/9/21 12:00	9.23	-0.071
2018/9/28 12:00	8.83	-0.466
2018/10/5 12:00	8.21	-1.090
2018/10/12 12:00	7.99	-1.310
2018/10/19 12:00	7.86	-1.445
2018/10/26 12:00	7.74	-1.562
2018/11/2 12:00	7.62	-1.677
2018/11/9 12:00	7.78	-1.522
2018/11/16 12:00	7.73	-1.568
2018/11/23 12:00	7.67	-1.628
2018/11/30 12:00	7.64	-1.660
2018/12/7 12:00	7.63	-1.668
2018/12/14 12:00	7.61	-1.685
2018/12/21 12:00	7.60	-1.696
2018/12/28 12:00	10.55	-1.253
2019/1/4 12:00	7.34	-1.961
2019/1/11 12:00	8.90	-0.400
2019/1/18 12:00	6.66	-2.639
2019/1/25 12:00	7.34	-1.957
2019/2/1 12:00	7.34	-1.964
2019/2/8 12:00	7.29	-2.013
2019/2/15 12:00	7.22	-2.078
2019/2/22 12:00	7.24	-2.063
2019/3/1 12:00	7.25	-2.054
2019/3/8 12:00	7.94	-1.363
2019/3/15 12:00	7.85	-1.445
2019/3/22 12:00	7.79	-1.506
2019/3/29 12:00	7.58	-1.718
2019/4/5 12:00	7.61	-1.694
2019/4/12 12:00	7.48	-1.817
2019/4/19 12:00	7.52	-1.783
2019/4/26 12:00	7.53	-1.771
2019/5/3 12:00	7.61	-1.692
2019/5/10 12:00	7.59	-1.714
2019/5/17 12:00	7.50	-1.798
2019/5/24 12:00	7.76	-1.535
2019/5/31 12:00	7.64	-1.663
2019/6/7 12:00	7.57	-1.728
2019/6/14 12:00	7.80	-1.499
2019/6/21 12:00	7.89	-1.415
2019/6/28 12:00	8.18	-1.117
2019/7/5 12:00	8.99	-0.315
2019/7/12 12:00	8.05	-1.255
2019/7/19 12:00	8.50	-0.798
2019/7/26 12:00	8.03	-1.273
2019/8/2 12:00	7.85	-1.452
2019/8/9 12:00	7.76	-1.545
2019/8/16 12:00	7.71	-1.588
2019/8/23 12:00	7.58	-1.719
2019/8/30 12:00	7.69	-1.613
2019/9/6 12:00	7.69	-1.606
2019/9/13 12:00	8.23	-1.067
2019/9/20 12:00	7.95	-1.352
2019/9/27 12:00	7.89	-1.414
2019/10/4 12:00	7.84	-1.458
2019/10/11 12:00	7.66	-1.641
2019/10/18 12:00	8.14	-1.160
2019/10/25 12:00	9.24	-0.060
2019/11/1 12:00	8.42	-0.882
2019/11/8 12:00	8.07	-1.234
2019/11/15 12:00	7.86	-1.443
2019/11/22 12:00	7.63	-1.670
2019/11/29 12:00	8.31	-0.986
2019/12/6 12:00	7.96	-1.340
2019/12/13 12:00	7.75	-1.547
2019/12/20 12:00	7.67	-1.631
2019/12/27 12:00	-	-
2020/1/3 12:00	-	-
2020/1/10 12:00	-	-
2020/1/17 12:00	-	-
2020/1/24 12:00	-	-
2020/1/31 12:00	-	-
2020/2/7 12:00	-	-
1段階目水位 2018/2/24まで	7.71	-1.59
2段階目水位 2018/5/24まで	7.70	-1.60
最終水位 2018/8/24まで	7.69	-1.61

[地下水位]		
事業区域名	8丁目(道路部)	
計測地点名	8E-1	
計測地点地盤高 (T.P.m)	8.94	
計測日	地下水位 (T.P.m)	地下水位 (G.L.m)
2017/11/25 12:00	7.71	-1.227
2017/12/25 12:00	7.30	-1.640
2018/1/5 12:00	7.29	-1.651
2018/1/12 12:00	7.27	-1.666
2018/1/19 12:00	7.28	-1.662
2018/1/26 12:00	7.36	-1.577
2018/2/2 12:00	7.37	-1.566
2018/2/9 12:00	7.41	-1.535
2018/2/16 12:00	7.43	-1.512
2018/2/23 12:00	7.45	-1.493
2018/3/2 12:00	7.61	-1.332
2018/3/9 12:00	7.93	-1.006
2018/3/16 12:00	7.92	-1.024
2018/3/23 12:00	7.92	-1.021
2018/3/30 12:00	7.89	-1.047
2018/4/6 12:00	7.83	-1.110
2018/4/13 12:00	7.72	-1.215
2018/4/20 12:00	7.74	-1.202
2018/4/27 12:00	7.86	-1.083
2018/5/4 12:00	7.80	-1.142
2018/5/11 12:00	7.93	-1.014
2018/5/18 12:00	7.92	-1.024
2018/5/25 12:00	7.77	-1.171
2018/6/1 12:00	7.63	-1.311
2018/6/8 12:00	7.63	-1.313
2018/6/15 12:00	7.47	-1.474
2018/6/22 12:00	7.42	-1.521
2018/6/29 12:00	7.50	-1.444
2018/7/6 12:00	7.41	-1.526
2018/7/13 12:00	7.47	-1.468
2018/7/20 12:00	7.50	-1.436
2018/7/27 12:00	7.47	-1.468
2018/8/3 12:00	5.76	-3.178
2018/8/10 12:00	5.77	-3.175
2018/8/17 12:00	5.78	-3.163
2018/8/24 12:00	5.78	-3.162
2018/8/31 12:00	6.66	-2.279
2018/9/7 12:00	5.88	-3.057
2018/9/14 12:00	5.73	-3.213
2018/9/21 12:00	5.88	-3.055
2018/9/28 12:00	5.89	-3.052
2018/10/5 12:00	5.89	-3.052
2018/10/12 12:00	5.89	-3.049
2018/10/19 12:00	5.90	-3.045
2018/10/26 12:00	5.90	-3.044
2018/11/2 12:00	5.90	-3.040
2018/11/9 12:00	5.90	-3.039
2018/11/16 12:00	5.90	-3.039
2018/11/23 12:00	5.91	-3.028
2018/11/30 12:00	5.90	-3.036
2018/12/7 12:00	5.90	-3.035
2018/12/14 12:00	5.91	-3.032
2018/12/21 12:00	5.91	-3.028
2018/12/28 12:00	5.91	-3.027
2019/1/4 12:00	5.92	-3.024
2019/1/11 12:00	5.92	-3.021
2019/1/18 12:00	5.92	-3.020
2019/1/25 12:00	5.92	-3.019
2019/2/1 12:00	5.92	-3.018
2019/2/8 12:00	5.92	-3.022
2019/2/15 12:00	5.92	-3.019
2019/2/22 12:00	5.92	-3.022
2019/3/1 12:00	5.91	-3.030
2019/3/8 12:00	5.91	-3.032
2019/3/15 12:00	5.91	-3.026
2019/3/22 12:00	5.91	-3.028
2019/3/29 12:00	5.90	-3.035
2019/4/5 12:00	5.91	-3.033
2019/4/12 12:00	5.86	-3.080
2019/4/19 12:00	5.84	-3.101
2019/4/26 12:00	5.76	-3.180
2019/5/3 12:00	5.75	-3.186
2019/5/10 12:00	5.75	-3.192
2019/5/17 12:00	5.75	-3.191
2019/5/24 12:00	5.75	-3.194
2019/5/31 12:00	5.90	-3.036
2019/6/7 12:00	5.90	-3.037
2019/6/14 12:00	5.90	-3.040
2019/6/21 12:00	5.90	-3.043
2019/6/28 12:00	5.89	-3.046
2019/7/5 12:00	5.89	-3.051
2019/7/12 12:00	5.89	-3.048
2019/7/19 12:00	5.89	-3.050
2019/7/26 12:00	5.89	-3.051
2019/8/2 12:00	5.89	-3.051
2019/8/9 12:00	5.88	-3.056
2019/8/16 12:00	5.88	-3.063
2019/8/23 12:00	5.89	-3.047
2019/8/30 12:00	5.87	-3.072
2019/9/6 12:00	5.87	-3.069
2019/9/13 12:00	5.86	-3.083
2019/9/20 12:00	5.86	-3.077
2019/9/27 12:00	5.86	-3.077
2019/10/4 12:00	5.87	-3.067
2019/10/11 12:00	5.88	-3.062
2019/10/18 12:00	5.86	-3.076
2019/10/25 12:00	5.88	-3.056
2019/11/1 12:00	5.88	-3.063
2019/11/8 12:00	5.92	-3.019
2019/11/15 12:00	5.93	-3.015
2019/11/22 12:00	5.95	-2.986
2019/11/29 12:00	5.87	-3.073
2019/12/6 12:00	5.87	-3.073
2019/12/13 12:00	5.88	-3.063
2019/12/20 12:00	5.89	-3.046
2019/12/27 12:00	5.92	-3.019
2020/1/3 12:00	5.97	-2.968
2020/1/10 12:00	5.99	-2.949
2020/1/17 12:00	6.02	-2.916
2020/1/24 12:00	6.03	-2.906
2020/1/31 12:00	5.90	-3.042
2020/2/7 12:00	5.89	-3.052

[沈下量]

事業区域名	8丁目(民地部)
計測地点名	8F.1
計測日	沈下量 (cm)
2017/11/25 12:00	0.0
2017/12/25 12:00	0.2
2018/1/5 12:00	0.2
2018/1/12 12:00	0.2
2018/1/19 12:00	0.3
2018/1/26 12:00	0.3
2018/2/2 12:00	0.4
2018/2/9 12:00	0.4
2018/2/16 12:00	0.3
2018/2/23 12:00	0.4
2018/3/2 12:00	0.3
2018/3/9 12:00	0.3
2018/3/16 12:00	0.3
2018/3/23 12:00	0.2
2018/3/30 12:00	0.2
2018/4/6 12:00	0.2
2018/4/13 12:00	0.2
2018/4/20 12:00	0.3
2018/4/27 12:00	0.3
2018/5/4 12:00	0.2
2018/5/11 12:00	0.2
2018/5/18 12:00	0.2
2018/5/25 12:00	0.2
2018/6/1 12:00	0.2
2018/6/8 12:00	0.2
2018/6/15 12:00	0.2
2018/6/22 12:00	0.2
2018/6/29 12:00	0.2
2018/7/6 12:00	0.3
2018/7/13 12:00	0.3
2018/7/20 12:00	0.3
2018/7/27 12:00	0.3
2018/8/3 12:00	0.4
2018/8/10 12:00	0.4
2018/8/17 12:00	0.4
2018/8/24 12:00	0.5
2018/8/31 12:00	0.5
2018/9/7 12:00	0.5
2018/9/14 12:00	0.5
2018/9/21 12:00	0.4
2018/9/28 12:00	0.3
2018/10/5 12:00	0.3
2018/10/12 12:00	0.3
2018/10/19 12:00	0.4
2018/10/26 12:00	0.4
2018/11/2 12:00	0.5
2018/11/9 12:00	0.5
2018/11/16 12:00	0.5
2018/11/23 12:00	0.5
2018/11/30 12:00	0.6
2018/12/7 12:00	0.6
2018/12/14 12:00	0.6
2018/12/21 12:00	0.6
2018/12/28 12:00	0.6
2019/1/4 12:00	0.7
2019/1/11 12:00	0.7
2019/1/18 12:00	0.7
2019/1/25 12:00	0.7
2019/2/1 12:00	0.8
2019/2/8 12:00	0.8
2019/2/15 12:00	0.8
2019/2/22 12:00	0.8
2019/3/1 12:00	0.9
2019/3/8 12:00	0.8
2019/3/15 12:00	0.7
2019/3/22 12:00	0.7
2019/3/29 12:00	0.8
2019/4/5 12:00	0.8
2019/4/12 12:00	0.8
2019/4/19 12:00	0.8
2019/4/26 12:00	0.8
2019/5/3 12:00	0.8
2019/5/10 12:00	0.8
2019/5/17 12:00	0.8
2019/5/24 12:00	0.7
2019/5/31 12:00	0.7
2019/6/7 12:00	0.8
2019/6/14 12:00	0.7
2019/6/21 12:00	0.7
2019/6/28 12:00	0.6
2019/7/5 12:00	0.6
2019/7/12 12:00	0.6
2019/7/19 12:00	0.6
2019/7/26 12:00	0.6
2019/8/2 12:00	0.6
2019/8/9 12:00	0.7
2019/8/16 12:00	0.7
2019/8/23 12:00	0.7
2019/8/30 12:00	0.7
2019/9/6 12:00	0.8
2019/9/13 12:00	0.7
2019/9/20 12:00	0.7
2019/9/27 12:00	0.7
2019/10/4 12:00	0.7
2019/10/11 12:00	0.8
2019/10/18 12:00	0.7
2019/10/25 12:00	0.6
2019/11/1 12:00	0.6
2019/11/8 12:00	0.6
2019/11/15 12:00	0.7
2019/11/22 12:00	0.7
2019/11/29 12:00	0.6
2019/12/6 12:00	0.7
2019/12/13 12:00	0.7
2019/12/20 12:00	0.7
2019/12/27 12:00	-
2020/1/3 12:00	-
2020/1/10 12:00	-
2020/1/17 12:00	-
2020/1/24 12:00	-
2020/1/31 12:00	-
2020/2/7 12:00	-

[沈下量]

事業区域名	8丁目(道路部)	
	8E.1	8D.1(ポンプ部)
計測地点名	沈下量 (cm)	沈下量 (cm)
計測日		
2017/11/25 12:00	0.0	0.0
2017/12/25 12:00	0.3	0.1
2018/1/5 12:00	0.3	0.1
2018/1/12 12:00	0.3	0.1
2018/1/19 12:00	0.4	0.1
2018/1/26 12:00	0.4	0.1
2018/2/2 12:00	0.4	0.2
2018/2/9 12:00	0.4	0.2
2018/2/16 12:00	0.4	0.2
2018/2/23 12:00	0.4	0.2
2018/3/2 12:00	0.4	0.2
2018/3/9 12:00	0.4	0.2
2018/3/16 12:00	0.4	0.1
2018/3/23 12:00	0.3	0.1
2018/3/30 12:00	0.3	0.1
2018/4/6 12:00	0.3	0.1
2018/4/13 12:00	0.3	0.1
2018/4/20 12:00	0.4	0.1
2018/4/27 12:00	0.4	0.1
2018/5/4 12:00	0.4	0.1
2018/5/11 12:00	0.4	0.1
2018/5/18 12:00	0.3	0.1
2018/5/25 12:00	0.3	0.1
2018/6/1 12:00	0.4	0.1
2018/6/8 12:00	0.4	0.1
2018/6/15 12:00	0.4	0.1
2018/6/22 12:00	0.4	0.1
2018/6/29 12:00	0.4	0.2
2018/7/6 12:00	0.4	0.2
2018/7/13 12:00	0.5	0.2
2018/7/20 12:00	0.5	0.2
2018/7/27 12:00	0.5	0.2
2018/8/3 12:00	0.6	0.2
2018/8/10 12:00	0.7	0.3
2018/8/17 12:00	0.7	0.3
2018/8/24 12:00	0.8	0.4
2018/8/31 12:00	0.8	0.4
2018/9/7 12:00	0.8	0.4
2018/9/14 12:00	0.9	0.4
2018/9/21 12:00	0.9	0.4
2018/9/28 12:00	0.8	0.3
2018/10/5 12:00	0.8	0.3
2018/10/12 12:00	0.8	0.3
2018/10/19 12:00	0.9	0.4
2018/10/26 12:00	0.9	0.4
2018/11/2 12:00	1.0	0.4
2018/11/9 12:00	1.0	0.4
2018/11/16 12:00	1.2	0.4
2018/11/23 12:00	1.2	0.4
2018/11/30 12:00	1.3	0.4
2018/12/7 12:00	1.3	0.4
2018/12/14 12:00	1.3	0.4
2018/12/21 12:00	1.4	0.5
2018/12/28 12:00	1.4	0.4
2019/1/4 12:00	1.4	0.5
2019/1/11 12:00	1.5	0.5
2019/1/18 12:00	1.5	0.5
2019/1/25 12:00	1.5	0.5
2019/2/1 12:00	1.6	0.5
2019/2/8 12:00	1.6	0.5
2019/2/15 12:00	1.6	0.6
2019/2/22 12:00	1.7	0.6
2019/3/1 12:00	1.7	0.6
2019/3/8 12:00	1.7	0.5
2019/3/15 12:00	1.7	0.5
2019/3/22 12:00	1.7	0.5
2019/3/29 12:00	1.7	0.5
2019/4/5 12:00	1.7	0.5
2019/4/12 12:00	1.7	0.5
2019/4/19 12:00	1.7	0.5
2019/4/26 12:00	1.7	0.5
2019/5/3 12:00	1.7	0.5
2019/5/10 12:00	1.7	0.5
2019/5/17 12:00	1.7	0.5
2019/5/24 12:00	1.7	0.5
2019/5/31 12:00	1.7	0.5
2019/6/7 12:00	1.7	0.5
2019/6/14 12:00	1.7	0.5
2019/6/21 12:00	1.7	0.5
2019/6/28 12:00	1.7	0.4
2019/7/5 12:00	1.7	0.5
2019/7/12 12:00	1.7	0.5
2019/7/19 12:00	1.7	0.5
2019/7/26 12:00	1.7	0.5
2019/8/2 12:00	1.7	0.5
2019/8/9 12:00	1.7	0.5
2019/8/16 12:00	1.7	0.5
2019/8/23 12:00	1.8	0.6
2019/8/30 12:00	1.8	0.5
2019/9/6 12:00	1.8	0.6
2019/9/13 12:00	1.8	0.6
2019/9/20 12:00	1.8	0.6
2019/9/27 12:00	1.8	0.6
2019/10/4 12:00	1.8	0.6
2019/10/11 12:00	1.8	0.6
2019/10/18 12:00	1.8	0.6
2019/10/25 12:00	1.8	0.5
2019/11/1 12:00	1.8	0.5
2019/11/8 12:00	1.8	0.5
2019/11/15 12:00	1.8	0.6
2019/11/22 12:00	1.9	0.6
2019/11/29 12:00	1.8	0.5
2019/12/6 12:00	1.8	0.6
2019/12/13 12:00	1.9	0.6
2019/12/20 12:00	1.9	0.6
2019/12/27 12:00	1.9	0.6
2020/1/3 12:00	1.9	0.6
2020/1/10 12:00	1.9	0.6
2020/1/17 12:00	2.0	0.6
2020/1/24 12:00	2.0	0.6
2020/1/31 12:00	2.0	0.6
2020/2/7 12:00	2.0	0.6

[地下水位]				
事業区域名	10丁目(民地部)			
	10F.1		10F.2	
計測地点名				
計測地点地盤高 (T.P.m)	8.96		9.15	
計測日	地下水位 (T.P.m)	地下水位 (G.L.m)	地下水位 (T.P.m)	地下水位 (G.L.m)
2017/11/25 12:00	7.13	-1.827	7.30	-1.848
2017/12/25 12:00	6.69	-2.274	7.01	-2.138
2018/1/5 12:00	6.69	-2.274	6.92	-2.232
2018/1/12 12:00	6.67	-2.286	6.89	-2.261
2018/1/19 12:00	6.66	-2.298	6.89	-2.262
2018/1/26 12:00	6.69	-2.274	6.90	-2.245
2018/2/2 12:00	6.70	-2.258	6.84	-2.308
2018/2/9 12:00	6.72	-2.235	6.87	-2.281
2018/2/16 12:00	6.72	-2.239	6.89	-2.264
2018/2/23 12:00	6.70	-2.256	6.85	-2.303
2018/3/2 12:00	6.72	-2.240	6.93	-2.222
2018/3/9 12:00	6.82	-2.143	6.93	-2.218
2018/3/16 12:00	7.04	-1.919	7.07	-2.083
2018/3/23 12:00	7.09	-1.866	7.15	-2.002
2018/3/30 12:00	7.05	-1.910	7.12	-2.025
2018/4/6 12:00	7.02	-1.936	7.13	-2.017
2018/4/13 12:00	6.98	-1.981	7.10	-2.050
2018/4/20 12:00	6.98	-1.979	7.08	-2.068
2018/4/27 12:00	7.06	-1.901	7.13	-2.017
2018/5/4 12:00	7.08	-1.880	7.18	-1.965
2018/5/11 12:00	7.17	-1.789	7.16	-1.991
2018/5/18 12:00	7.24	-1.721	7.27	-1.876
2018/5/25 12:00	7.16	-1.801	7.27	-1.880
2018/6/1 12:00	7.07	-1.887	7.25	-1.899
2018/6/8 12:00	7.04	-1.924	7.22	-1.931
2018/6/15 12:00	6.94	-2.023	7.20	-1.950
2018/6/22 12:00	6.70	-2.263	7.19	-1.963
2018/6/29 12:00	6.62	-2.339	7.13	-2.020
2018/7/6 12:00	6.59	-2.371	7.08	-2.065
2018/7/13 12:00	6.58	-2.380	7.06	-2.095
2018/7/20 12:00	6.57	-2.393	7.01	-2.136
2018/7/27 12:00	6.56	-2.401	6.97	-2.176
2018/8/3 12:00	6.54	-2.424	7.02	-2.131
2018/8/10 12:00	6.48	-2.483	7.01	-2.138
2018/8/17 12:00	6.45	-2.514	6.97	-2.177
2018/8/24 12:00	6.43	-2.532	6.94	-2.212
2018/8/31 12:00	6.40	-2.559	6.92	-2.231
2018/9/7 12:00	6.46	-2.496	6.99	-2.160
2018/9/14 12:00	6.46	-2.502	6.99	-2.157
2018/9/21 12:00	6.48	-2.478	7.06	-2.093
2018/9/28 12:00	6.61	-2.354	7.14	-2.010
2018/10/5 12:00	6.60	-2.355	7.14	-2.013
2018/10/12 12:00	6.50	-2.459	7.14	-2.011
2018/10/19 12:00	6.45	-2.511	7.07	-2.080
2018/10/26 12:00	6.41	-2.547	7.01	-2.138
2018/11/2 12:00	6.39	-2.569	6.95	-2.196
2018/11/9 12:00	6.39	-2.573	6.96	-2.191
2018/11/16 12:00	6.37	-2.585	6.92	-2.228
2018/11/23 12:00	6.36	-2.596	6.91	-2.240
2018/11/30 12:00	6.35	-2.606	6.89	-2.264
2018/12/7 12:00	6.34	-2.617	6.89	-2.263
2018/12/14 12:00	6.34	-2.617	6.86	-2.285
2018/12/21 12:00	6.33	-2.633	6.84	-2.305
2018/12/28 12:00	6.32	-2.641	6.86	-2.289
2019/1/4 12:00	6.31	-2.650	6.79	-2.357
2019/1/11 12:00	6.35	-2.608	6.81	-2.342
2019/1/18 12:00	6.42	-2.536	6.80	-2.350
2019/1/25 12:00	6.44	-2.518	6.77	-2.381
2019/2/1 12:00	6.46	-2.504	6.78	-2.368
2019/2/8 12:00	6.44	-2.516	6.77	-2.385
2019/2/15 12:00	6.37	-2.585	6.71	-2.435
2019/2/22 12:00	6.36	-2.604	6.74	-2.414
2019/3/1 12:00	6.35	-2.606	6.75	-2.402
2019/3/8 12:00	6.40	-2.556	6.81	-2.336
2019/3/15 12:00	6.96	-1.997	6.87	-2.281
2019/3/22 12:00	6.90	-2.062	6.98	-2.167
2019/3/29 12:00	6.85	-2.107	6.93	-2.215
2019/4/5 12:00	6.84	-2.121	6.94	-2.212
2019/4/12 12:00	6.83	-2.126	6.92	-2.230
2019/4/19 12:00	6.83	-2.132	6.94	-2.212
2019/4/26 12:00	6.82	-2.135	6.95	-2.196
2019/5/3 12:00	6.87	-2.093	6.96	-2.188
2019/5/10 12:00	6.86	-2.100	6.96	-2.170
2019/5/17 12:00	6.83	-2.130	6.94	-2.213
2019/5/24 12:00	6.89	-2.072	7.00	-2.149
2019/5/31 12:00	6.86	-2.104	7.00	-2.149
2019/6/7 12:00	6.83	-2.132	6.99	-2.164
2019/6/14 12:00	6.94	-2.024	7.03	-2.117
2019/6/21 12:00	6.97	-1.994	7.10	-2.046
2019/6/28 12:00	7.00	-1.962	7.15	-1.995
2019/7/5 12:00	6.98	-1.977	7.14	-2.012
2019/7/12 12:00	6.93	-2.031	7.12	-2.029
2019/7/19 12:00	7.00	-1.957	7.14	-2.012
2019/7/26 12:00	6.91	-2.050	7.13	-2.023
2019/8/2 12:00	6.86	-2.103	7.09	-2.058
2019/8/9 12:00	6.82	-2.142	7.06	-2.093
2019/8/16 12:00	6.79	-2.166	7.05	-2.100
2019/8/23 12:00	6.79	-2.169	7.01	-2.138
2019/8/30 12:00	6.84	-2.118	7.07	-2.078
2019/9/6 12:00	6.80	-2.157	7.04	-2.110
2019/9/13 12:00	6.92	-2.035	7.12	-2.031
2019/9/20 12:00	6.85	-2.114	7.11	-2.038
2019/9/27 12:00	6.81	-2.153	7.05	-2.100
2019/10/4 12:00	6.79	-2.174	7.07	-2.081
2019/10/11 12:00	6.76	-2.198	7.01	-2.136
2019/10/18 12:00	7.63	-1.325	7.27	-1.883
2019/10/25 12:00	7.32	-1.644	7.32	-1.827
2019/11/1 12:00	7.14	-1.824	7.32	-1.830
2019/11/8 12:00	6.90	-2.060	7.24	-1.913
2019/11/15 12:00	6.80	-2.155	7.14	-2.010
2019/11/22 12:00	6.75	-2.207	7.02	-2.130
2019/11/29 12:00	6.89	-2.066	7.15	-2.003
2019/12/6 12:00	6.80	-2.164	7.10	-2.051
2019/12/13 12:00	6.75	-2.213	7.04	-2.110
2019/12/20 12:00	6.76	-2.205	7.01	-2.140
2019/12/27 12:00	6.84	-2.115	7.03	-2.122
2020/1/3 12:00	6.71	-2.246	6.96	-2.188
2020/1/10 12:00	6.70	-2.257	6.95	-2.201
2020/1/17 12:00	6.69	-2.270	6.92	-2.227
2020/1/24 12:00	6.68	-2.278	6.99	-2.157
2020/1/31 12:00	6.77	-2.188	6.99	-2.159
2020/2/7 12:00	6.75	-2.213	6.99	-2.155
1段階目水位 2018/2/24まで	6.94	-2.02	6.94	-2.21
2段階目水位 2018/5/24まで	6.75	-2.21	6.75	-2.40
最終水位 2018/8/24まで	6.56	-2.40	6.56	-2.59

[沈下量]

事業区域名 計測地点名 計測日	10丁目(民地部)	
	10F.1 沈下量 (cm)	10F.2 沈下量 (cm)
2017/11/25 12:00	0.0	0.0
2017/12/25 12:00	0.0	0.1
2018/1/5 12:00	0.1	0.1
2018/1/12 12:00	0.1	0.1
2018/1/19 12:00	0.1	0.2
2018/1/26 12:00	0.1	0.2
2018/2/2 12:00	0.2	0.2
2018/2/9 12:00	0.2	0.2
2018/2/16 12:00	0.2	0.3
2018/2/23 12:00	0.2	0.3
2018/3/2 12:00	0.2	0.3
2018/3/9 12:00	0.2	0.4
2018/3/16 12:00	0.3	0.4
2018/3/23 12:00	0.3	0.4
2018/3/30 12:00	0.3	0.4
2018/4/6 12:00	0.3	0.4
2018/4/13 12:00	0.3	0.4
2018/4/20 12:00	0.3	0.4
2018/4/27 12:00	0.3	0.4
2018/5/4 12:00	0.3	0.4
2018/5/11 12:00	0.3	0.5
2018/5/18 12:00	0.3	0.5
2018/5/25 12:00	0.3	0.5
2018/6/1 12:00	0.3	0.5
2018/6/8 12:00	0.4	0.5
2018/6/15 12:00	0.4	0.5
2018/6/22 12:00	0.4	0.6
2018/6/29 12:00	0.4	0.6
2018/7/6 12:00	0.5	0.6
2018/7/13 12:00	0.5	0.6
2018/7/20 12:00	0.5	0.7
2018/7/27 12:00	0.5	0.7
2018/8/3 12:00	0.6	0.7
2018/8/10 12:00	0.6	0.8
2018/8/17 12:00	0.7	0.8
2018/8/24 12:00	0.7	0.8
2018/8/31 12:00	0.7	0.9
2018/9/7 12:00	0.8	0.9
2018/9/14 12:00	0.8	0.9
2018/9/21 12:00	0.8	0.9
2018/9/28 12:00	0.9	0.9
2018/10/5 12:00	0.9	1.0
2018/10/12 12:00	0.9	0.9
2018/10/19 12:00	0.9	0.9
2018/10/26 12:00	0.9	1.0
2018/11/2 12:00	0.9	1.0
2018/11/9 12:00	0.9	1.0
2018/11/16 12:00	1.0	1.0
2018/11/23 12:00	1.0	1.0
2018/11/30 12:00	1.0	1.0
2018/12/7 12:00	1.0	1.0
2018/12/14 12:00	1.0	1.1
2018/12/21 12:00	1.0	1.1
2018/12/28 12:00	1.0	1.1
2019/1/4 12:00	1.1	1.1
2019/1/11 12:00	1.0	1.1
2019/1/18 12:00	1.1	1.1
2019/1/25 12:00	1.1	1.2
2019/2/1 12:00	1.1	1.2
2019/2/8 12:00	1.1	1.2
2019/2/15 12:00	1.2	1.2
2019/2/22 12:00	1.2	1.3
2019/3/1 12:00	1.2	1.3
2019/3/8 12:00	1.2	1.3
2019/3/15 12:00	1.3	1.3
2019/3/22 12:00	1.2	1.3
2019/3/29 12:00	1.3	1.4
2019/4/5 12:00	1.3	1.4
2019/4/12 12:00	1.3	1.4
2019/4/19 12:00	1.3	1.4
2019/4/26 12:00	1.3	1.4
2019/5/3 12:00	1.4	1.4
2019/5/10 12:00	1.4	1.4
2019/5/17 12:00	1.4	1.5
2019/5/24 12:00	1.4	1.5
2019/5/31 12:00	1.5	1.5
2019/6/7 12:00	1.5	1.5
2019/6/14 12:00	1.5	1.6
2019/6/21 12:00	1.5	1.6
2019/6/28 12:00	1.5	1.6
2019/7/5 12:00	1.6	1.6
2019/7/12 12:00	1.6	1.6
2019/7/19 12:00	1.6	1.6
2019/7/26 12:00	1.6	1.6
2019/8/2 12:00	1.6	1.6
2019/8/9 12:00	1.6	1.6
2019/8/16 12:00	1.7	1.6
2019/8/23 12:00	1.7	1.7
2019/8/30 12:00	1.7	1.7
2019/9/6 12:00	1.8	1.7
2019/9/13 12:00	1.8	1.7
2019/9/20 12:00	1.8	1.7
2019/9/27 12:00	1.8	1.8
2019/10/4 12:00	1.8	1.7
2019/10/11 12:00	1.8	1.8
2019/10/18 12:00	1.8	1.8
2019/10/25 12:00	1.8	1.8
2019/11/1 12:00	1.8	1.8
2019/11/8 12:00	1.8	1.7
2019/11/15 12:00	1.8	1.7
2019/11/22 12:00	1.8	1.8
2019/11/29 12:00	1.8	1.8
2019/12/6 12:00	1.8	1.7
2019/12/13 12:00	1.8	1.8
2019/12/20 12:00	1.8	1.8
2019/12/27 12:00	1.8	1.7
2020/1/3 12:00	1.8	1.8
2020/1/10 12:00	1.8	1.8
2020/1/17 12:00	1.9	1.8
2020/1/24 12:00	1.9	1.8
2020/1/31 12:00	1.9	1.8
2020/2/7 12:00	1.9	1.8

[沈下量]

事業区域名 計測地点名 計測日	10丁目(道路部)				
	10E 1 沈下量 (cm)	10E 2 沈下量 (cm)	10E 3 沈下量 (cm)	10E 4 沈下量 (cm)	10D 1(ポンプ部) 沈下量 (cm)
2017/11/25 12:00	0.0	0.0	0.0	0.0	0.0
2017/12/25 12:00	0.1	0.1	0.1	0.1	0.1
2018/1/5 12:00	0.1	0.1	0.2	0.2	0.2
2018/1/12 12:00	0.1	0.1	0.2	0.2	0.2
2018/1/19 12:00	0.1	0.1	0.3	0.2	0.2
2018/1/26 12:00	0.1	0.2	0.3	0.2	0.2
2018/2/2 12:00	0.1	0.2	0.3	0.3	0.2
2018/2/9 12:00	0.2	0.2	0.3	0.3	0.3
2018/2/16 12:00	0.2	0.2	0.3	0.3	0.3
2018/2/23 12:00	0.2	0.3	0.4	0.3	0.3
2018/3/2 12:00	0.2	0.3	0.4	0.3	0.3
2018/3/9 12:00	0.2	0.3	0.4	0.3	0.3
2018/3/16 12:00	0.2	0.3	0.4	0.3	0.3
2018/3/23 12:00	0.2	0.4	0.4	0.3	0.3
2018/3/30 12:00	0.2	0.5	0.4	0.4	0.3
2018/4/6 12:00	0.2	0.5	0.4	0.3	0.3
2018/4/13 12:00	0.2	0.5	0.4	0.4	0.4
2018/4/20 12:00	0.2	0.6	0.4	0.4	0.4
2018/4/27 12:00	0.2	0.6	0.4	0.4	0.4
2018/5/4 12:00	0.2	0.6	0.4	0.4	0.4
2018/5/11 12:00	0.3	0.6	0.4	0.4	0.5
2018/5/18 12:00	0.3	0.6	0.4	0.4	0.4
2018/5/25 12:00	0.3	0.6	0.4	0.4	0.5
2018/6/1 12:00	0.3	0.6	0.5	0.5	0.5
2018/6/8 12:00	0.3	0.6	0.5	0.5	0.5
2018/6/15 12:00	0.3	0.7	0.5	0.5	0.5
2018/6/22 12:00	0.3	0.7	0.5	0.5	0.5
2018/6/29 12:00	0.4	0.7	0.6	0.6	0.6
2018/7/6 12:00	0.4	0.7	0.6	0.6	0.6
2018/7/13 12:00	0.4	0.8	0.6	0.7	0.6
2018/7/20 12:00	0.4	0.8	0.7	0.7	0.6
2018/7/27 12:00	0.5	0.8	0.7	0.7	0.7
2018/8/3 12:00	0.5	0.8	0.7	0.8	0.7
2018/8/10 12:00	0.5	0.8	0.8	0.8	0.7
2018/8/17 12:00	0.6	0.8	0.8	0.8	0.7
2018/8/24 12:00	0.6	0.9	0.9	0.9	0.8
2018/8/31 12:00	0.6	0.9	0.9	0.9	0.8
2018/9/7 12:00	0.7	0.9	0.9	0.9	0.8
2018/9/14 12:00	0.7	0.9	1.0	1.0	0.8
2018/9/21 12:00	0.7	0.9	0.9	1.0	0.8
2018/9/28 12:00	0.7	0.9	0.9	1.0	0.8
2018/10/5 12:00	0.7	0.9	1.0	1.0	0.9
2018/10/12 12:00	0.7	0.9	0.9	1.0	0.9
2018/10/19 12:00	0.7	0.9	1.0	1.0	0.9
2018/10/26 12:00	0.7	0.9	1.0	1.0	0.9
2018/11/2 12:00	0.7	1.0	1.0	1.1	0.9
2018/11/9 12:00	0.8	1.0	1.0	1.1	0.9
2018/11/16 12:00	0.8	1.0	1.1	1.1	0.9
2018/11/23 12:00	0.8	1.0	1.0	1.1	0.9
2018/11/30 12:00	0.8	1.0	1.1	1.1	0.9
2018/12/7 12:00	0.8	1.0	1.1	1.1	0.9
2018/12/14 12:00	0.8	1.0	1.1	1.2	1.0
2018/12/21 12:00	0.8	1.0	1.2	1.2	1.0
2018/12/28 12:00	0.8	1.0	1.1	1.2	1.0
2019/1/4 12:00	0.8	1.0	1.2	1.2	1.0
2019/1/11 12:00	0.8	1.0	1.2	1.2	1.0
2019/1/18 12:00	0.8	1.0	1.2	1.3	1.0
2019/1/25 12:00	0.8	1.1	1.2	1.3	1.0
2019/2/1 12:00	0.9	1.1	1.2	1.3	1.0
2019/2/8 12:00	0.9	1.1	1.3	1.3	1.1
2019/2/15 12:00	0.9	1.1	1.3	1.4	1.1
2019/2/22 12:00	0.9	1.1	1.3	1.4	1.1
2019/3/1 12:00	0.9	1.1	1.4	1.4	1.1
2019/3/8 12:00	0.9	1.1	1.4	1.4	1.1
2019/3/15 12:00	0.9	1.1	1.4	1.4	1.1
2019/3/22 12:00	0.9	1.1	1.3	1.4	1.1
2019/3/29 12:00	1.0	1.1	1.4	1.4	1.1
2019/4/5 12:00	1.0	1.1	1.3	1.4	1.1
2019/4/12 12:00	1.0	1.1	1.4	1.5	1.1
2019/4/19 12:00	1.0	1.1	1.4	1.5	1.1
2019/4/26 12:00	1.0	1.2	1.4	1.5	1.1
2019/5/3 12:00	1.0	1.2	1.4	1.5	1.2
2019/5/10 12:00	1.0	1.2	1.4	1.6	1.2
2019/5/17 12:00	1.1	1.2	1.4	1.6	1.2
2019/5/24 12:00	1.1	1.2	1.4	1.6	1.2
2019/5/31 12:00	1.1	1.2	1.4	1.6	1.2
2019/6/7 12:00	1.1	1.2	1.5	1.6	1.2
2019/6/14 12:00	1.1	1.2	1.5	1.7	1.3
2019/6/21 12:00	1.1	1.2	1.5	1.7	1.3
2019/6/28 12:00	1.1	1.2	1.5	1.7	1.3
2019/7/5 12:00	1.1	1.2	1.5	1.7	1.3
2019/7/12 12:00	1.2	1.3	1.5	1.7	1.3
2019/7/19 12:00	1.2	1.3	1.5	1.7	1.3
2019/7/26 12:00	1.2	1.3	1.5	1.7	1.3
2019/8/2 12:00	1.2	1.3	1.5	1.8	1.3
2019/8/9 12:00	1.2	1.3	1.6	1.8	1.3
2019/8/16 12:00	1.2	1.3	1.6	1.8	1.4
2019/8/23 12:00	1.2	1.3	1.6	1.8	1.4
2019/8/30 12:00	1.3	1.3	1.6	1.8	1.4
2019/9/6 12:00	1.3	1.3	1.7	1.9	1.4
2019/9/13 12:00	1.3	1.3	1.6	1.9	1.4
2019/9/20 12:00	1.3	1.3	1.6	1.9	1.4
2019/9/27 12:00	1.3	1.4	1.7	1.9	1.4
2019/10/4 12:00	1.3	1.3	1.6	1.9	1.4
2019/10/11 12:00	1.3	1.4	1.7	1.9	1.4
2019/10/18 12:00	1.3	1.3	1.6	1.9	1.4
2019/10/25 12:00	1.3	1.3	1.6	1.9	1.4
2019/11/1 12:00	1.3	1.3	1.6	1.9	1.4
2019/11/8 12:00	1.3	1.3	1.6	1.9	1.4
2019/11/15 12:00	1.3	1.3	1.6	1.9	1.5
2019/11/22 12:00	1.3	1.4	1.7	1.9	1.5
2019/11/29 12:00	1.3	1.3	1.7	1.9	1.5
2019/12/6 12:00	1.3	1.3	1.7	1.9	1.5
2019/12/13 12:00	1.3	1.3	1.7	1.9	1.5
2019/12/20 12:00	1.3	1.3	1.7	1.9	1.5
2019/12/27 12:00	1.3	1.3	1.6	1.9	1.5
2020/1/3 12:00	1.3	1.3	1.7	2.0	1.5
2020/1/10 12:00	1.3	1.3	1.7	2.0	1.5
2020/1/17 12:00	1.3	1.4	1.7	2.0	1.5
2020/1/24 12:00	1.3	1.4	1.7	2.0	1.5
2020/1/31 12:00	1.3	1.4	1.7	2.0	1.5
2020/2/7 12:00	1.3	1.4	1.7	2.0	1.5

[地下水位]		11丁目(民地部)			
事業区域名	計測地点名				
計測地点地盤高(T.P.m)	11F.1		11F.2		
計測日	地下水位(T.P.m)	地下水位(G.L.m)	地下水位(T.P.m)	地下水位(G.L.m)	
2017/11/25 12:00	7.41	-0.955	7.32	-1.896	
2017/12/25 12:00	6.86	-1.499	6.64	-2.582	
2018/1/5 12:00	6.79	-1.574	6.68	-2.544	
2018/1/12 12:00	6.75	-1.607	6.68	-2.538	
2018/1/19 12:00	6.79	-1.574	6.70	-2.522	
2018/1/26 12:00	6.85	-1.510	6.76	-2.456	
2018/2/2 12:00	6.85	-1.507	6.79	-2.428	
2018/2/9 12:00	6.89	-1.475	6.83	-2.393	
2018/2/16 12:00	6.93	-1.432	6.85	-2.371	
2018/2/23 12:00	6.94	-1.421	6.86	-2.360	
2018/3/2 12:00	7.02	-1.339	6.94	-2.283	
2018/3/9 12:00	7.44	-0.919	7.36	-1.864	
2018/3/16 12:00	7.41	-0.948	7.34	-1.879	
2018/3/23 12:00	7.57	-0.786	7.54	-1.683	
2018/3/30 12:00	7.28	-1.082	7.20	-2.022	
2018/4/6 12:00	7.37	-0.987	7.27	-1.952	
2018/4/13 12:00	7.26	-1.096	7.18	-2.042	
2018/4/20 12:00	7.22	-1.137	7.12	-2.097	
2018/4/27 12:00	7.23	-1.131	7.09	-2.132	
2018/5/4 12:00	7.20	-1.160	7.06	-2.155	
2018/5/11 12:00	7.19	-1.170	7.05	-2.168	
2018/5/18 12:00	7.17	-1.185	7.03	-2.187	
2018/5/25 12:00	7.28	-1.080	7.15	-2.066	
2018/6/1 12:00	7.07	-1.291	6.90	-2.322	
2018/6/8 12:00	7.08	-1.277	6.91	-2.313	
2018/6/15 12:00	6.89	-1.469	6.60	-2.617	
2018/6/22 12:00	6.84	-1.524	6.54	-2.684	
2018/6/29 12:00	6.76	-1.597	6.52	-2.703	
2018/7/6 12:00	6.74	-1.620	6.52	-2.696	
2018/7/13 12:00	6.77	-1.586	6.52	-2.697	
2018/7/20 12:00	6.74	-1.624	6.52	-2.703	
2018/7/27 12:00	6.73	-1.628	6.50	-2.717	
2018/8/3 12:00	6.67	-1.692	6.35	-2.868	
2018/8/10 12:00	6.64	-1.721	6.33	-2.895	
2018/8/17 12:00	6.58	-1.782	6.31	-2.913	
2018/8/24 12:00	6.57	-1.794	6.31	-2.914	
2018/8/31 12:00	6.55	-1.809	6.29	-2.931	
2018/9/7 12:00	6.61	-1.749	6.32	-2.899	
2018/9/14 12:00	6.60	-1.761	6.33	-2.895	
2018/9/21 12:00	6.70	-1.657	6.38	-2.837	
2018/9/28 12:00	6.77	-1.591	6.50	-2.719	
2018/10/5 12:00	6.66	-1.703	6.39	-2.826	
2018/10/12 12:00	6.63	-1.729	6.35	-2.872	
2018/10/19 12:00	6.59	-1.773	6.33	-2.891	
2018/10/26 12:00	6.55	-1.807	6.33	-2.887	
2018/11/2 12:00	6.50	-1.855	6.32	-2.902	
2018/11/9 12:00	6.57	-1.793	6.33	-2.888	
2018/11/16 12:00	6.50	-1.856	6.32	-2.900	
2018/11/23 12:00	6.50	-1.861	6.31	-2.910	
2018/11/30 12:00	6.47	-1.894	6.31	-2.913	
2018/12/7 12:00	6.46	-1.898	6.31	-2.915	
2018/12/14 12:00	6.42	-1.944	6.29	-2.926	
2018/12/21 12:00	6.36	-1.999	6.28	-2.941	
2018/12/28 12:00	6.39	-1.974	6.27	-2.950	
2019/1/4 12:00	6.33	-2.031	6.25	-2.967	
2019/1/11 12:00	6.42	-1.944	6.25	-2.974	
2019/1/18 12:00	6.42	-1.945	6.23	-2.987	
2019/1/25 12:00	6.41	-1.950	6.23	-2.992	
2019/2/1 12:00	6.41	-1.948	6.23	-2.990	
2019/2/8 12:00	6.41	-1.953	6.21	-3.010	
2019/2/15 12:00	6.41	-1.954	6.21	-3.011	
2019/2/22 12:00	6.41	-1.955	6.20	-3.017	
2019/3/1 12:00	6.41	-1.955	6.23	-2.990	
2019/3/8 12:00	6.41	-1.952	6.24	-2.981	
2019/3/15 12:00	6.41	-1.953	6.27	-2.951	
2019/3/22 12:00	6.46	-1.897	6.26	-2.958	
2019/3/29 12:00	6.35	-2.013	6.24	-2.983	
2019/4/5 12:00	6.41	-1.952	6.25	-2.974	
2019/4/12 12:00	6.39	-1.973	6.25	-2.968	
2019/4/19 12:00	6.38	-1.975	6.24	-2.983	
2019/4/26 12:00	6.42	-1.944	6.24	-2.983	
2019/5/3 12:00	6.43	-1.929	6.27	-2.954	
2019/5/10 12:00	6.41	-1.951	6.18	-3.041	
2019/5/17 12:00	6.37	-1.986	6.15	-3.067	
2019/5/24 12:00	6.46	-1.897	6.18	-3.037	
2019/5/31 12:00	6.42	-1.943	6.16	-3.063	
2019/6/7 12:00	6.41	-1.952	6.15	-3.070	
2019/6/14 12:00	6.48	-1.881	6.20	-3.020	
2019/6/21 12:00	6.52	-1.842	6.22	-3.004	
2019/6/28 12:00	6.62	-1.736	6.25	-2.973	
2019/7/5 12:00	6.63	-1.726	6.31	-2.907	
2019/7/12 12:00	6.61	-1.751	6.25	-2.971	
2019/7/19 12:00	6.63	-1.734	6.33	-2.893	
2019/7/26 12:00	6.53	-1.831	6.26	-2.962	
2019/8/2 12:00	6.52	-1.839	6.24	-2.975	
2019/8/9 12:00	6.50	-1.858	6.24	-2.978	
2019/8/16 12:00	6.59	-1.773	6.25	-2.966	
2019/8/23 12:00	6.54	-1.817	6.25	-2.973	
2019/8/30 12:00	6.53	-1.830	6.24	-2.975	
2019/9/6 12:00	6.51	-1.853	6.24	-2.985	
2019/9/13 12:00	6.58	-1.780	6.26	-2.959	
2019/9/20 12:00	6.49	-1.866	6.22	-2.999	
2019/9/27 12:00	6.46	-1.896	6.21	-3.008	
2019/10/4 12:00	6.55	-1.809	6.21	-3.008	
2019/10/11 12:00	6.49	-1.871	6.22	-3.001	
2019/10/18 12:00	6.72	-1.642	6.27	-2.948	
2019/10/25 12:00	6.75	-1.611	6.58	-2.637	
2019/11/1 12:00	6.65	-1.706	8.16	-1.063	
2019/11/8 12:00	6.55	-1.806	7.48	-1.740	
2019/11/15 12:00	6.51	-1.846	5.92	-3.302	
2019/11/22 12:00	6.42	-1.943	6.24	-2.976	
2019/11/29 12:00	6.56	-1.799	7.97	-1.254	
2019/12/6 12:00	6.45	-1.909	6.73	-2.493	
2019/12/13 12:00	6.46	-1.902	6.69	-2.534	
2019/12/20 12:00	6.49	-1.874	6.70	-2.520	
2019/12/27 12:00	6.57	-1.786	6.69	-2.527	
2020/1/3 12:00	6.46	-1.901	6.66	-2.562	
2020/1/10 12:00	6.42	-1.938	6.67	-2.554	
2020/1/17 12:00	6.40	-1.960	6.67	-2.554	
2020/1/24 12:00	6.39	-1.969	6.65	-2.566	
2020/1/31 12:00	6.55	-1.809	6.76	-2.456	
2020/2/7 12:00	6.39	-1.971	6.70	-2.517	
1段階目水位 2018/2/24まで	6.96	-1.40	6.96	-2.26	
2段階目水位 2018/5/24まで	6.80	-1.57	6.80	-2.43	
最終水位 2018/8/24まで	6.63	-1.73	6.63	-2.59	

[沈下量]

事業区域名 計測地点名 計測日	11丁目(民地部)	
	11F.1 沈下量 (cm)	11F.2 沈下量 (cm)
2017/11/25 12:00	0.0	0.0
2017/12/25 12:00	0.2	0.2
2018/1/5 12:00	0.3	0.3
2018/1/12 12:00	0.3	0.3
2018/1/19 12:00	0.3	0.3
2018/1/26 12:00	0.3	0.3
2018/2/2 12:00	0.4	0.3
2018/2/9 12:00	0.4	0.3
2018/2/16 12:00	0.4	0.3
2018/2/23 12:00	0.4	0.4
2018/3/2 12:00	0.4	0.3
2018/3/9 12:00	0.4	0.3
2018/3/16 12:00	0.4	0.3
2018/3/23 12:00	0.4	0.3
2018/3/30 12:00	0.4	0.3
2018/4/6 12:00	0.4	0.3
2018/4/13 12:00	0.4	0.3
2018/4/20 12:00	0.4	0.3
2018/4/27 12:00	0.4	0.3
2018/5/4 12:00	0.4	0.3
2018/5/11 12:00	0.4	0.4
2018/5/18 12:00	0.4	0.4
2018/5/25 12:00	0.4	0.4
2018/6/1 12:00	0.5	0.4
2018/6/8 12:00	0.5	0.4
2018/6/15 12:00	0.5	0.5
2018/6/22 12:00	0.5	0.5
2018/6/29 12:00	0.6	0.5
2018/7/6 12:00	0.6	0.6
2018/7/13 12:00	0.6	0.6
2018/7/20 12:00	0.7	0.6
2018/7/27 12:00	0.7	0.7
2018/8/3 12:00	0.7	0.7
2018/8/10 12:00	0.8	0.7
2018/8/17 12:00	0.8	0.8
2018/8/24 12:00	0.9	0.8
2018/8/31 12:00	0.9	0.8
2018/9/7 12:00	0.9	0.8
2018/9/14 12:00	0.9	0.9
2018/9/21 12:00	1.0	0.9
2018/9/28 12:00	1.0	0.9
2018/10/5 12:00	1.0	0.9
2018/10/12 12:00	1.0	0.9
2018/10/19 12:00	1.0	0.9
2018/10/26 12:00	1.0	1.0
2018/11/2 12:00	1.1	1.0
2018/11/9 12:00	1.1	1.0
2018/11/16 12:00	1.1	1.0
2018/11/23 12:00	1.1	1.0
2018/11/30 12:00	1.1	1.1
2018/12/7 12:00	1.2	1.1
2018/12/14 12:00	1.2	1.1
2018/12/21 12:00	1.2	1.1
2018/12/28 12:00	1.2	1.1
2019/1/4 12:00	1.3	1.2
2019/1/11 12:00	1.3	1.2
2019/1/18 12:00	1.3	1.2
2019/1/25 12:00	1.3	1.2
2019/2/1 12:00	1.3	1.3
2019/2/8 12:00	1.4	1.3
2019/2/15 12:00	1.4	1.3
2019/2/22 12:00	1.4	1.4
2019/3/1 12:00	1.5	1.4
2019/3/8 12:00	1.5	1.4
2019/3/15 12:00	1.5	1.4
2019/3/22 12:00	1.5	1.4
2019/3/29 12:00	1.5	1.4
2019/4/5 12:00	1.5	1.4
2019/4/12 12:00	1.5	1.4
2019/4/19 12:00	1.5	1.5
2019/4/26 12:00	1.6	1.5
2019/5/3 12:00	1.6	1.5
2019/5/10 12:00	1.6	1.5
2019/5/17 12:00	1.6	1.5
2019/5/24 12:00	1.6	1.5
2019/5/31 12:00	1.6	1.5
2019/6/7 12:00	1.7	1.5
2019/6/14 12:00	1.7	1.6
2019/6/21 12:00	1.7	1.6
2019/6/28 12:00	1.7	1.6
2019/7/5 12:00	1.7	1.6
2019/7/12 12:00	1.7	1.6
2019/7/19 12:00	1.7	1.6
2019/7/26 12:00	1.7	1.6
2019/8/2 12:00	1.7	1.6
2019/8/9 12:00	1.7	1.7
2019/8/16 12:00	1.7	1.7
2019/8/23 12:00	1.8	1.7
2019/8/30 12:00	1.8	1.7
2019/9/6 12:00	1.8	1.7
2019/9/13 12:00	1.8	1.7
2019/9/20 12:00	1.8	1.7
2019/9/27 12:00	1.9	1.8
2019/10/4 12:00	1.9	1.8
2019/10/11 12:00	1.9	1.8
2019/10/18 12:00	1.8	1.7
2019/10/25 12:00	1.8	1.7
2019/11/1 12:00	1.8	1.7
2019/11/8 12:00	1.8	1.7
2019/11/15 12:00	1.9	1.7
2019/11/22 12:00	1.9	1.8
2019/11/29 12:00	1.9	1.7
2019/12/6 12:00	1.9	1.8
2019/12/13 12:00	1.9	1.8
2019/12/20 12:00	1.9	1.8
2019/12/27 12:00	1.9	1.8
2020/1/3 12:00	2.0	1.8
2020/1/10 12:00	2.0	1.8
2020/1/17 12:00	2.0	1.8
2020/1/24 12:00	2.0	1.8
2020/1/31 12:00	2.0	1.8
2020/2/7 12:00	2.1	1.9

[沈下量]

事業区域名 計測地点名	11丁目(道路部)				
	11E.1 沈下量 (cm)	11E.2 沈下量 (cm)	11E.3 沈下量 (cm)	11E.4 沈下量 (cm)	11D.1(ポンプ部) 沈下量 (cm)
2017/11/25 12:00	0.0	0.0	0.0	0.0	0.0
2017/12/25 12:00	0.1	0.1	0.1	0.1	0.0
2018/1/5 12:00	0.2	0.1	0.1	0.1	0.1
2018/1/12 12:00	0.2	0.2	0.1	0.2	0.1
2018/1/19 12:00	0.2	0.2	0.2	0.2	0.1
2018/1/26 12:00	0.2	0.2	0.2	0.2	0.1
2018/2/2 12:00	0.2	0.3	0.2	0.2	0.1
2018/2/9 12:00	0.3	0.3	0.2	0.3	0.2
2018/2/16 12:00	0.3	0.3	0.2	0.3	0.2
2018/2/23 12:00	0.3	0.3	0.2	0.3	0.2
2018/3/2 12:00	0.3	0.3	0.2	0.3	0.2
2018/3/9 12:00	0.3	0.4	0.2	0.3	0.2
2018/3/16 12:00	0.3	0.3	0.2	0.3	0.2
2018/3/23 12:00	0.3	0.3	0.2	0.3	0.2
2018/3/30 12:00	0.3	0.3	0.2	0.3	0.3
2018/4/6 12:00	0.3	0.3	0.2	0.3	0.2
2018/4/13 12:00	0.3	0.3	0.2	0.3	0.3
2018/4/20 12:00	0.3	0.3	0.2	0.3	0.3
2018/4/27 12:00	0.3	0.3	0.2	0.3	0.3
2018/5/4 12:00	0.3	0.3	0.2	0.3	0.3
2018/5/11 12:00	0.3	0.4	0.2	0.3	0.3
2018/5/18 12:00	0.3	0.4	0.2	0.3	0.3
2018/5/25 12:00	0.3	0.4	0.2	0.4	0.3
2018/6/1 12:00	0.3	0.4	0.3	0.4	0.3
2018/6/8 12:00	0.3	0.4	0.3	0.4	0.4
2018/6/15 12:00	0.4	0.4	0.3	0.4	0.4
2018/6/22 12:00	0.4	0.5	0.3	0.5	0.4
2018/6/29 12:00	0.4	0.5	0.3	0.5	0.4
2018/7/6 12:00	0.4	0.5	0.3	0.6	0.4
2018/7/13 12:00	0.5	0.6	0.3	0.6	0.4
2018/7/20 12:00	0.5	0.6	0.4	0.6	0.4
2018/7/27 12:00	0.5	0.6	0.4	0.6	0.5
2018/8/3 12:00	0.5	0.7	0.4	0.7	0.5
2018/8/10 12:00	0.5	0.7	0.4	0.7	0.5
2018/8/17 12:00	0.6	0.8	0.5	0.7	0.5
2018/8/24 12:00	0.6	0.8	0.5	0.8	0.6
2018/8/31 12:00	0.6	0.8	0.5	0.8	0.6
2018/9/7 12:00	0.6	0.9	0.5	0.8	0.6
2018/9/14 12:00	0.7	0.9	0.6	0.8	0.7
2018/9/21 12:00	0.7	0.9	0.6	0.8	0.7
2018/9/28 12:00	0.7	0.9	0.6	0.8	0.7
2018/10/5 12:00	0.7	1.0	0.6	0.8	0.7
2018/10/12 12:00	0.7	1.0	0.6	0.8	0.7
2018/10/19 12:00	0.7	1.0	0.6	0.8	0.7
2018/10/26 12:00	0.7	1.0	0.6	0.9	0.7
2018/11/2 12:00	0.7	1.0	0.6	0.9	0.7
2018/11/9 12:00	0.8	1.0	0.6	0.9	0.7
2018/11/16 12:00	0.8	1.0	0.6	0.9	0.7
2018/11/23 12:00	0.8	1.0	0.6	0.9	0.7
2018/11/30 12:00	0.8	1.0	0.7	0.9	0.8
2018/12/7 12:00	0.8	1.1	0.6	0.9	0.8
2018/12/14 12:00	0.8	1.1	0.7	0.9	0.8
2018/12/21 12:00	0.9	1.1	0.7	1.0	0.8
2018/12/28 12:00	0.9	1.1	0.7	0.9	0.8
2019/1/4 12:00	0.9	1.1	0.7	1.0	0.8
2019/1/11 12:00	0.9	1.1	0.7	1.0	0.8
2019/1/18 12:00	0.9	1.2	0.7	1.0	0.8
2019/1/25 12:00	0.9	1.2	0.7	1.0	0.8
2019/2/1 12:00	0.9	1.2	0.8	1.0	0.8
2019/2/8 12:00	1.0	1.2	0.8	1.1	0.9
2019/2/15 12:00	1.0	1.3	0.8	1.1	0.9
2019/2/22 12:00	1.0	1.3	0.8	1.1	0.9
2019/3/1 12:00	1.0	1.3	0.8	1.1	0.9
2019/3/8 12:00	1.0	1.3	0.8	1.1	0.9
2019/3/15 12:00	1.1	1.3	0.8	1.2	0.9
2019/3/22 12:00	1.1	1.3	0.8	1.1	0.9
2019/3/29 12:00	1.1	1.4	0.8	1.2	0.9
2019/4/5 12:00	1.1	1.4	0.8	1.2	0.9
2019/4/12 12:00	1.1	1.4	0.9	1.2	1.0
2019/4/19 12:00	1.1	1.4	0.9	1.2	1.0
2019/4/26 12:00	1.1	1.4	0.9	1.2	1.0
2019/5/3 12:00	1.1	1.4	0.9	1.2	1.0
2019/5/10 12:00	1.1	1.5	0.9	1.3	1.0
2019/5/17 12:00	1.1	1.5	0.9	1.3	1.0
2019/5/24 12:00	1.1	1.5	0.9	1.3	1.0
2019/5/31 12:00	1.2	1.5	0.9	1.3	1.0
2019/6/7 12:00	1.2	1.5	0.9	1.3	1.0
2019/6/14 12:00	1.2	1.6	0.9	1.4	1.0
2019/6/21 12:00	1.2	1.6	0.9	1.4	1.0
2019/6/28 12:00	1.2	1.6	0.9	1.4	1.0
2019/7/5 12:00	1.2	1.6	0.9	1.4	1.0
2019/7/12 12:00	1.2	1.6	0.9	1.4	1.1
2019/7/19 12:00	1.2	1.6	1.0	1.4	1.1
2019/7/26 12:00	1.2	1.6	1.0	1.4	1.1
2019/8/2 12:00	1.2	1.7	1.0	1.4	1.1
2019/8/9 12:00	1.2	1.7	1.0	1.4	1.1
2019/8/16 12:00	1.2	1.7	0.9	1.4	1.1
2019/8/23 12:00	1.3	1.7	1.0	1.5	1.1
2019/8/30 12:00	1.3	1.7	1.0	1.5	1.1
2019/9/6 12:00	1.3	1.7	1.0	1.5	1.2
2019/9/13 12:00	1.3	1.8	1.0	1.5	1.2
2019/9/20 12:00	1.3	1.8	1.0	1.5	1.2
2019/9/27 12:00	1.3	1.8	1.0	1.5	1.2
2019/10/4 12:00	1.3	1.8	1.0	1.5	1.2
2019/10/11 12:00	1.3	1.8	1.0	1.5	1.2
2019/10/18 12:00	1.3	1.8	1.0	1.5	1.3
2019/10/25 12:00	1.3	1.8	1.0	1.5	1.2
2019/11/1 12:00	1.3	1.8	1.0	1.5	1.2
2019/11/8 12:00	1.3	1.8	1.0	1.5	1.2
2019/11/15 12:00	1.3	1.8	1.0	1.5	1.2
2019/11/22 12:00	1.4	1.8	1.1	1.5	1.3
2019/11/29 12:00	1.4	1.8	1.0	1.5	1.2
2019/12/6 12:00	1.4	1.8	1.0	1.5	1.2
2019/12/13 12:00	1.4	1.8	1.0	1.5	1.2
2019/12/20 12:00	1.4	1.8	1.0	1.5	1.2
2019/12/27 12:00	1.4	1.8	1.0	1.5	1.2
2020/1/3 12:00	1.4	1.8	1.1	1.5	1.3
2020/1/10 12:00	1.4	1.8	1.1	1.5	1.2
2020/1/17 12:00	1.4	1.8	1.1	1.5	1.3
2020/1/24 12:00	1.4	1.9	1.1	1.5	1.3
2020/1/31 12:00	1.4	1.8	1.1	1.5	1.2
2020/2/7 12:00	1.5	1.9	1.1	1.6	1.3

[沈下量]

事業区域名	7-12丁目(民地部)		
	12F 1	12F 2	12F 3
計測地点名	沈下量	沈下量	沈下量
計測日	(cm)	(cm)	(cm)
2017/11/25 12:00	0.0	0.0	0.0
2017/12/25 12:00	0.1	0.2	0.1
2018/1/5 12:00	0.2	0.3	0.1
2018/1/12 12:00	0.2	0.3	0.1
2018/1/19 12:00	0.3	0.4	0.2
2018/1/26 12:00	0.3	0.4	0.2
2018/2/2 12:00	0.3	0.4	0.2
2018/2/9 12:00	0.3	0.4	0.2
2018/2/16 12:00	0.4	0.4	0.2
2018/2/23 12:00	0.4	0.5	0.3
2018/3/2 12:00	0.4	0.5	0.3
2018/3/9 12:00	0.4	0.5	0.3
2018/3/16 12:00	0.4	0.5	0.3
2018/3/23 12:00	0.4	0.5	0.3
2018/3/30 12:00	0.4	0.5	0.3
2018/4/6 12:00	0.4	0.5	0.3
2018/4/13 12:00	0.4	0.5	0.3
2018/4/20 12:00	0.4	0.5	0.3
2018/4/27 12:00	0.4	0.5	0.2
2018/5/4 12:00	0.4	0.5	0.2
2018/5/11 12:00	0.4	0.5	0.2
2018/5/18 12:00	0.4	0.5	0.2
2018/5/25 12:00	0.4	0.5	0.2
2018/6/1 12:00	0.5	0.5	0.2
2018/6/8 12:00	0.5	0.5	0.2
2018/6/15 12:00	0.5	0.6	0.2
2018/6/22 12:00	0.5	0.6	0.2
2018/6/29 12:00	0.6	0.6	0.2
2018/7/6 12:00	0.6	0.6	0.2
2018/7/13 12:00	0.6	0.6	0.2
2018/7/20 12:00	0.6	0.6	0.2
2018/7/27 12:00	0.7	0.7	0.2
2018/8/3 12:00	0.7	0.7	0.2
2018/8/10 12:00	0.7	0.7	0.2
2018/8/17 12:00	0.8	0.7	0.2
2018/8/24 12:00	0.8	0.7	0.3
2018/8/31 12:00	0.9	0.8	0.3
2018/9/7 12:00	0.9	0.8	0.3
2018/9/14 12:00	0.9	0.9	0.4
2018/9/21 12:00	0.9	0.9	0.4
2018/9/28 12:00	0.9	0.9	0.4
2018/10/5 12:00	0.9	0.9	0.4
2018/10/12 12:00	0.9	0.9	0.4
2018/10/19 12:00	0.9	0.9	0.4
2018/10/26 12:00	1.0	1.0	0.4
2018/11/2 12:00	1.0	1.0	0.4
2018/11/9 12:00	1.0	1.0	0.5
2018/11/16 12:00	1.0	1.0	0.5
2018/11/23 12:00	1.0	1.1	0.5
2018/11/30 12:00	1.0	1.1	0.5
2018/12/7 12:00	1.1	1.1	0.5
2018/12/14 12:00	1.1	1.2	0.6
2018/12/21 12:00	1.1	1.2	0.6
2018/12/28 12:00	1.1	1.2	0.6
2019/1/4 12:00	1.2	1.2	0.6
2019/1/11 12:00	1.2	1.2	0.6
2019/1/18 12:00	1.2	1.3	0.6
2019/1/25 12:00	1.2	1.3	0.7
2019/2/1 12:00	1.2	1.4	0.7
2019/2/8 12:00	1.3	1.4	0.7
2019/2/15 12:00	1.3	1.4	0.7
2019/2/22 12:00	1.3	1.5	0.8
2019/3/1 12:00	1.3	1.5	0.8
2019/3/8 12:00	1.4	1.5	0.8
2019/3/15 12:00	1.4	1.5	0.7
2019/3/22 12:00	1.3	1.5	0.7
2019/3/29 12:00	1.4	1.5	0.7
2019/4/5 12:00	1.4	1.5	0.7
2019/4/12 12:00	1.4	1.6	0.8
2019/4/19 12:00	1.4	1.6	0.8
2019/4/26 12:00	1.4	1.6	0.7
2019/5/3 12:00	1.4	1.6	0.7
2019/5/10 12:00	1.4	1.6	0.7
2019/5/17 12:00	1.4	1.6	0.7
2019/5/24 12:00	1.5	1.6	0.6
2019/5/31 12:00	1.5	1.6	0.6
2019/6/7 12:00	1.5	1.6	0.6
2019/6/14 12:00	1.5	1.6	0.7
2019/6/21 12:00	1.5	1.6	0.7
2019/6/28 12:00	1.5	1.6	0.7
2019/7/5 12:00	1.5	1.6	0.7
2019/7/12 12:00	1.5	1.7	0.7
2019/7/19 12:00	1.5	1.7	0.7
2019/7/26 12:00	1.5	1.7	0.7
2019/8/2 12:00	1.5	1.7	0.7
2019/8/9 12:00	1.6	1.6	0.7
2019/8/16 12:00	1.6	1.6	0.6
2019/8/23 12:00	1.6	1.7	0.6
2019/8/30 12:00	1.6	1.7	0.7
2019/9/6 12:00	1.6	1.7	0.7
2019/9/13 12:00	1.6	1.7	0.7
2019/9/20 12:00	1.6	1.7	0.7
2019/9/27 12:00	1.7	1.8	0.8
2019/10/4 12:00	1.7	1.7	0.8
2019/10/11 12:00	1.7	1.8	0.8
2019/10/18 12:00	1.7	1.8	0.8
2019/10/25 12:00	1.7	1.8	0.7
2019/11/1 12:00	1.6	1.7	0.7
2019/11/8 12:00	1.6	1.7	0.7
2019/11/15 12:00	1.6	1.8	0.7
2019/11/22 12:00	1.7	1.8	0.8
2019/11/29 12:00	1.7	1.8	0.8
2019/12/6 12:00	1.7	1.8	0.8
2019/12/13 12:00	1.7	1.8	0.8
2019/12/20 12:00	1.7	1.8	0.8
2019/12/27 12:00	1.7	1.8	0.8
2020/1/3 12:00	1.7	1.8	0.8
2020/1/10 12:00	1.7	1.8	0.8
2020/1/17 12:00	1.7	1.9	0.8
2020/1/24 12:00	1.7	1.9	0.9
2020/1/31 12:00	1.7	1.9	0.8
2020/2/7 12:00	1.8	1.9	0.9

[地下水位]

事業区域名	11B_2		12W_6		12W_8	
	計測地点名					
計測地点地盤高 (T.P.m)	8.38		8.71		8.43	
計測日	地下水位 (T.P.m)	地下水位 (GLm)	地下水位 (T.P.m)	地下水位 (GLm)	地下水位 (T.P.m)	地下水位 (GLm)
2017/11/25 12:00	6.13	-2.250	7.61	-1.105	7.12	-1.310
2017/12/25 12:00	6.08	-2.300	7.32	-1.394	6.88	-1.549
2018/1/5 12:00	6.07	-2.308	7.24	-1.468	6.79	-1.638
2018/1/12 12:00	6.07	-2.312	7.21	-1.498	6.75	-1.679
2018/1/19 12:00	6.07	-2.308	7.18	-1.528	6.75	-1.678
2018/1/26 12:00	6.09	-2.291	7.23	-1.479	6.83	-1.603
2018/2/2 12:00	6.10	-2.281	7.23	-1.479	6.81	-1.621
2018/2/9 12:00	6.09	-2.292	7.28	-1.427	6.78	-1.649
2018/2/16 12:00	6.08	-2.296	7.28	-1.449	6.75	-1.681
2018/2/23 12:00	6.09	-2.289	7.22	-1.492	6.73	-1.705
2018/3/2 12:00	6.12	-2.260	7.45	-1.259	6.83	-1.598
2018/3/9 12:00	6.39	-1.985	8.02	-0.692	7.64	-0.789
2018/3/16 12:00	6.22	-2.158	7.77	-0.943	7.17	-1.264
2018/3/23 12:00	6.33	-2.048	7.89	-0.818	7.38	-1.052
2018/3/30 12:00	6.23	-2.152	7.74	-0.969	7.17	-1.259
2018/4/6 12:00	6.23	-2.150	7.67	-1.039	7.11	-1.319
2018/4/13 12:00	6.15	-2.230	7.55	-1.164	7.03	-1.403
2018/4/20 12:00	6.19	-2.192	7.52	-1.193	7.02	-1.409
2018/4/27 12:00	6.30	-2.083	7.72	-0.988	7.14	-1.293
2018/5/4 12:00	6.31	-2.068	7.62	-1.093	7.10	-1.334
2018/5/11 12:00	6.43	-1.946	7.81	-0.898	7.23	-1.198
2018/5/18 12:00	6.35	-2.025	7.78	-0.930	7.19	-1.237
2018/5/25 12:00	6.33	-2.050	7.67	-1.044	7.13	-1.300
2018/6/1 12:00	6.41	-1.974	7.64	-1.066	7.12	-1.310
2018/6/8 12:00	6.26	-2.122	7.55	-1.164	7.07	-1.358
2018/6/15 12:00	6.28	-2.100	7.55	-1.164	7.11	-1.325
2018/6/22 12:00	6.41	-1.973	7.71	-1.004	7.15	-1.276
2018/6/29 12:00	6.22	-2.164	7.55	-1.162	7.08	-1.353
2018/7/6 12:00	6.27	-2.109	7.51	-1.195	7.09	-1.338
2018/7/13 12:00	6.23	-2.146	7.44	-1.268	7.03	-1.403
2018/7/20 12:00	6.24	-2.144	7.37	-1.339	6.95	-1.477
2018/7/27 12:00	6.25	-2.129	7.33	-1.382	6.90	-1.528
2018/8/3 12:00	6.22	-2.163	7.38	-1.333	7.01	-1.420
2018/8/10 12:00	6.22	-2.165	7.35	-1.365	7.01	-1.425
2018/8/17 12:00	6.23	-2.151	7.24	-1.470	6.90	-1.533
2018/8/24 12:00	6.17	-2.211	7.16	-1.549	6.83	-1.604
2018/8/31 12:00	6.18	-2.199	7.11	-1.604	6.79	-1.640
2018/9/7 12:00	6.17	-2.210	7.35	-1.359	7.00	-1.428
2018/9/14 12:00	6.17	-2.207	7.40	-1.311	7.06	-1.369
2018/9/21 12:00	6.30	-2.084	7.88	-0.827	7.41	-1.020
2018/9/28 12:00	6.50	-1.882	7.89	-0.820	7.41	-1.020
2018/10/5 12:00	6.15	-2.226	7.77	-0.942	7.24	-1.191
2018/10/12 12:00	6.07	-2.312	7.64	-1.070	7.12	-1.311
2018/10/19 12:00	6.06	-2.321	7.55	-1.157	7.05	-1.381
2018/10/26 12:00	6.05	-2.326	7.45	-1.263	6.98	-1.454
2018/11/2 12:00	6.05	-2.332	7.38	-1.328	6.93	-1.501
2018/11/9 12:00	6.08	-2.301	7.45	-1.257	6.92	-1.506
2018/11/16 12:00	6.05	-2.327	7.35	-1.355	6.85	-1.580
2018/11/23 12:00	6.04	-2.340	7.30	-1.412	6.81	-1.624
2018/11/30 12:00	6.04	-2.336	7.24	-1.468	6.76	-1.670
2018/12/7 12:00	6.06	-2.316	7.21	-1.500	6.75	-1.683
2018/12/14 12:00	6.05	-2.328	7.28	-1.428	6.81	-1.616
2018/12/21 12:00	6.02	-2.356	7.21	-1.503	6.76	-1.673
2018/12/28 12:00	6.01	-2.365	7.18	-1.534	6.72	-1.706
2019/1/4 12:00	6.01	-2.367	7.13	-1.576	6.69	-1.736
2019/1/11 12:00	6.02	-2.359	7.11	-1.601	6.67	-1.761
2019/1/18 12:00	6.01	-2.374	7.08	-1.629	6.65	-1.785
2019/1/25 12:00	6.00	-2.378	7.05	-1.656	6.62	-1.813
2019/2/1 12:00	6.02	-2.362	7.04	-1.666	6.61	-1.816
2019/2/8 12:00	6.01	-2.367	7.01	-1.695	6.59	-1.844
2019/2/15 12:00	6.01	-2.370	6.99	-1.718	6.58	-1.871
2019/2/22 12:00	6.01	-2.367	6.98	-1.733	6.54	-1.892
2019/3/1 12:00	6.05	-2.334	7.05	-1.656	6.68	-1.749
2019/3/8 12:00	6.07	-2.315	7.56	-1.154	6.86	-1.573
2019/3/15 12:00	6.10	-2.279	7.70	-1.005	7.05	-1.384
2019/3/22 12:00	6.05	-2.332	7.59	-1.121	6.98	-1.455
2019/3/29 12:00	6.03	-2.352	7.45	-1.260	6.90	-1.530
2019/4/5 12:00	6.06	-2.325	7.42	-1.287	6.90	-1.534
2019/4/12 12:00	6.07	-2.306	7.52	-1.189	6.98	-1.450
2019/4/19 12:00	6.11	-2.267	7.41	-1.302	6.90	-1.533
2019/4/26 12:00	6.18	-2.195	7.39	-1.320	6.93	-1.497
2019/5/3 12:00	6.28	-2.097	7.64	-1.072	7.06	-1.367
2019/5/10 12:00	6.24	-2.137	7.47	-1.244	6.96	-1.466
2019/5/17 12:00	6.23	-2.154	7.38	-1.331	6.90	-1.527
2019/5/24 12:00	6.46	-1.923	7.60	-1.115	7.13	-1.296
2019/5/31 12:00	6.20	-2.184	7.45	-1.260	7.02	-1.407
2019/6/7 12:00	6.19	-2.194	7.37	-1.337	6.95	-1.484
2019/6/14 12:00	6.34	-2.035	7.66	-1.051	7.17	-1.259
2019/6/21 12:00	6.24	-2.136	7.78	-0.926	7.25	-1.177
2019/6/28 12:00	6.25	-2.130	7.85	-0.860	7.26	-1.172
2019/7/5 12:00	6.73	-1.651	7.94	-0.768	7.41	-1.019
2019/7/12 12:00	6.23	-2.148	7.82	-0.895	7.23	-1.202
2019/7/19 12:00	6.30	-2.083	7.94	-0.766	7.36	-1.073
2019/7/26 12:00	6.18	-2.205	7.79	-0.920	7.17	-1.264
2019/8/2 12:00	6.13	-2.250	7.72	-0.994	7.12	-1.309
2019/8/9 12:00	6.14	-2.236	7.60	-1.105	7.04	-1.386
2019/8/16 12:00	6.24	-2.141	7.61	-1.102	7.05	-1.379
2019/8/23 12:00	6.17	-2.213	7.56	-1.145	7.03	-1.401
2019/8/30 12:00	6.18	-2.204	7.67	-1.035	7.16	-1.272
2019/9/6 12:00	6.11	-2.271	7.57	-1.135	7.04	-1.387
2019/9/13 12:00	6.39	-1.986	7.87	-0.836	7.27	-1.158
2019/9/20 12:00	6.05	-2.332	7.77	-0.940	7.14	-1.290
2019/9/27 12:00	6.05	-2.329	7.76	-0.953	7.11	-1.318
2019/10/4 12:00	6.04	-2.343	7.66	-1.045	7.08	-1.349
2019/10/11 12:00	6.01	-2.369	7.55	-1.162	7.00	-1.427
2019/10/18 12:00	6.22	-2.161	7.85	-0.858	7.29	-1.143
2019/10/25 12:00	6.25	-2.130	8.06	-0.651	7.64	-0.786
2019/11/1 12:00	6.10	-2.276	7.91	-0.801	7.28	-1.146
2019/11/8 12:00	6.04	-2.343	7.81	-0.903	7.18	-1.251
2019/11/15 12:00	6.01	-2.366	7.72	-0.992	7.12	-1.306
2019/11/22 12:00	6.01	-2.375	7.59	-1.118	7.05	-1.381
2019/11/29 12:00	6.12	-2.264	7.91	-0.803	-	-
2019/12/6 12:00	5.98	-2.398	7.79	-0.925	-	-
2019/12/13 12:00	5.99	-2.394	7.67	-1.039	-	-
2019/12/20 12:00	5.95	-2.425	7.60	-1.109	-	-
2019/12/27 12:00	5.97	-2.410	7.81	-0.898	-	-
2020/1/3 12:00	5.95	-2.431	7.61	-1.104	-	-
2020/1/10 12:00	5.97	-2.407	7.60	-1.105	-	-
2020/1/17 12:00	5.95	-2.432	7.56	-1.151	-	-
2020/1/24 12:00	5.94	-2.439	7.50	-1.206	-	-
2020/1/31 12:00	6.17	-2.212	7.91	-0.799	-	-
2020/2/7 12:00	6.00	-2.378	7.76	-0.949	-	-