

目 次

| | | |
|-------------------------|-------|----|
| 1. 概況 | | 1 |
| 2. 観測状況一覧 | | 2 |
| 3. 地下水位・沈下量・降水量グラフ（4丁目） | | 3 |
| 地下水位・沈下量・降水量グラフ（6丁目） | | 4 |
| 地下水位・沈下量・降水量グラフ（7・12丁目） | | 5 |
| 地下水位・沈下量・降水量グラフ（8丁目） | | 6 |
| 地下水位・沈下量・降水量グラフ（10丁目） | | 7 |
| 地下水位・沈下量・降水量グラフ（11丁目） | | 8 |
| 地下水位・沈下量・降水量グラフ（12丁目） | | 9 |
| 地下水位・降水量グラフ（対象範囲外） | | 10 |
| 4. 地下水位・沈下量データ（4丁目） | | 11 |
| 地下水位・沈下量データデータ（6丁目） | | 15 |
| 地下水位・沈下量データデータ（7・12丁目） | | 19 |
| 地下水位・沈下量データデータ（8丁目） | | 23 |
| 地下水位・沈下量データデータ（10丁目） | | 27 |
| 地下水位・沈下量データデータ（11丁目） | | 31 |
| 地下水位・沈下量データデータ（12丁目） | | 35 |
| 地下水位データ（対象範囲外） | | 40 |

[概況]

[測定日] 2018年7月27日

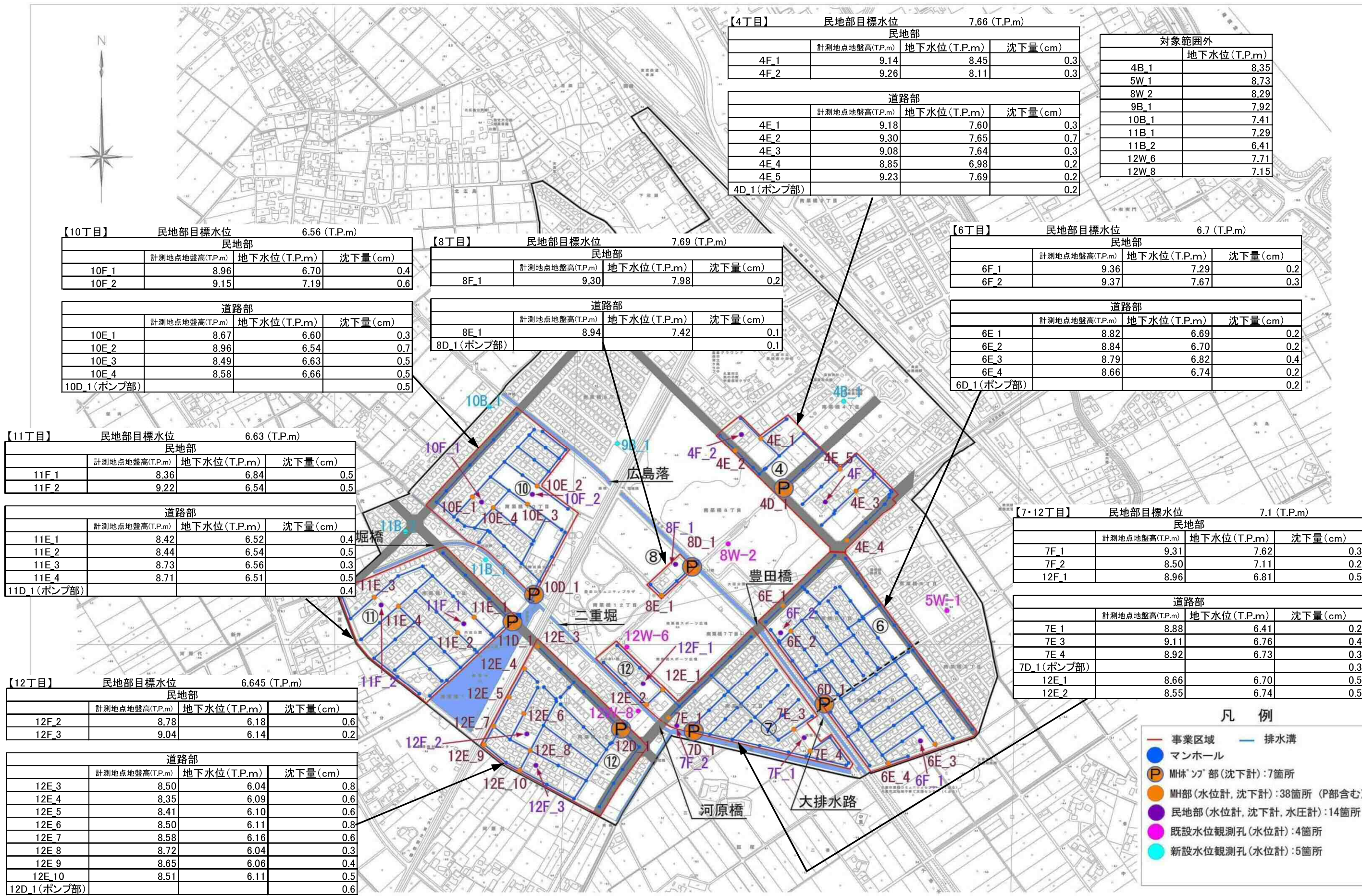
[概況]

現在、第3段階水位（最終水位）への水位低下を行っております。第17回委員会において設定された一次管理値沈下量4cm以下の状態であり、現時点で問題はありません。

※地下水位の測定値はGL表示値とT.P.表示値があります（表示単位：m）。

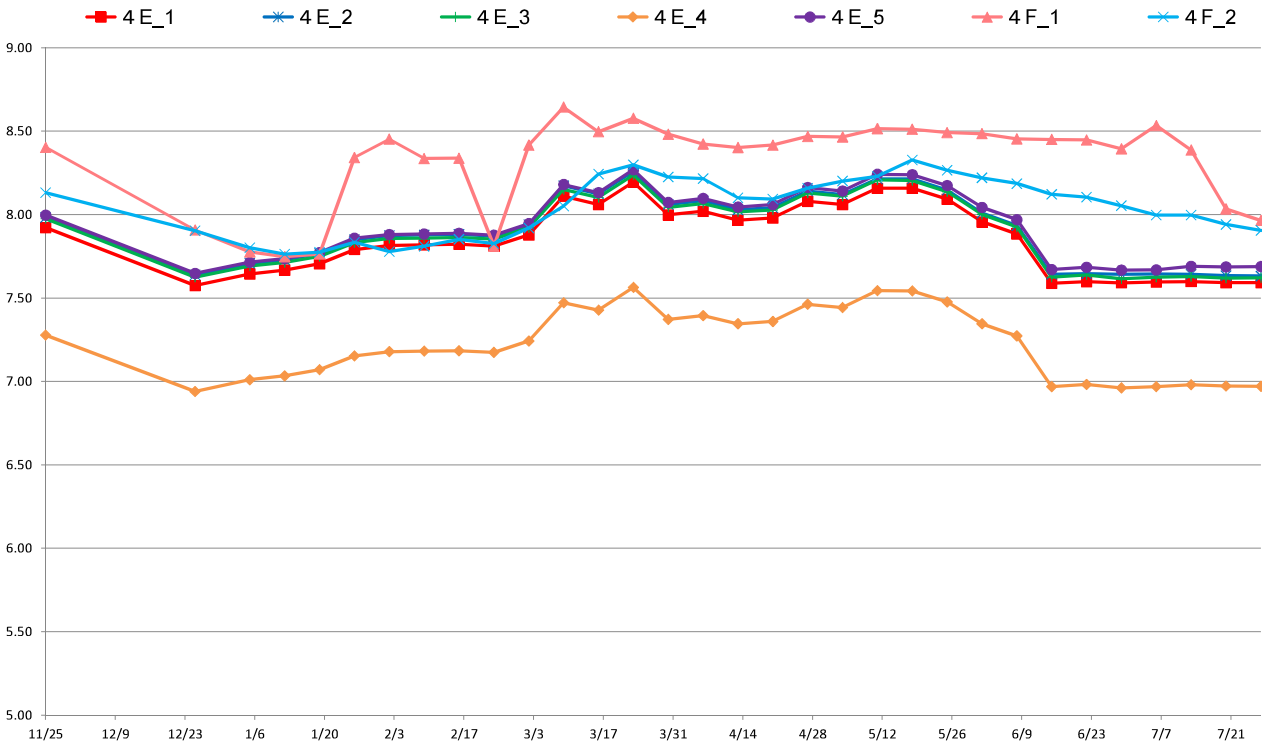
- GLとはGround Level（地盤面）の略です。GL-1.00mは、地盤面から1m下がった高さを表します。
- T.P.とはTokyo Peil（東京湾平均海水面）の略です。東京湾の平均海水面を0mとした時の高さを表し、測量法にて定めている高さの基準になります。

※降水量データは、気象庁（久喜）観測データを示す。

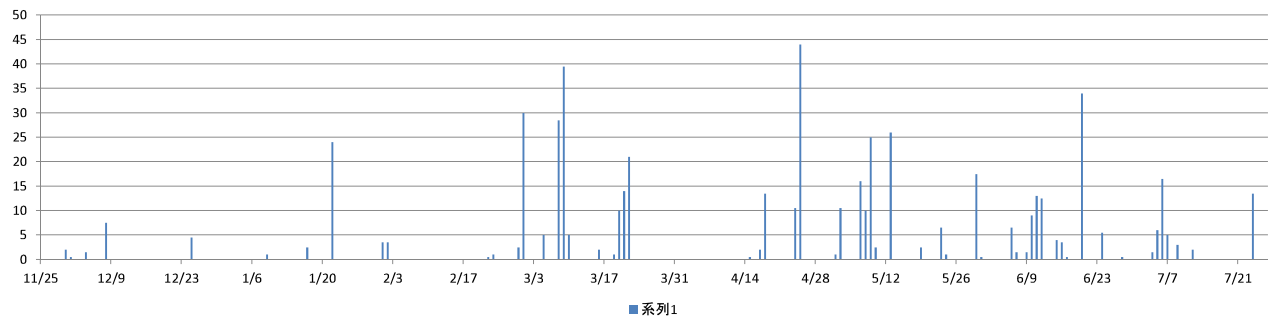
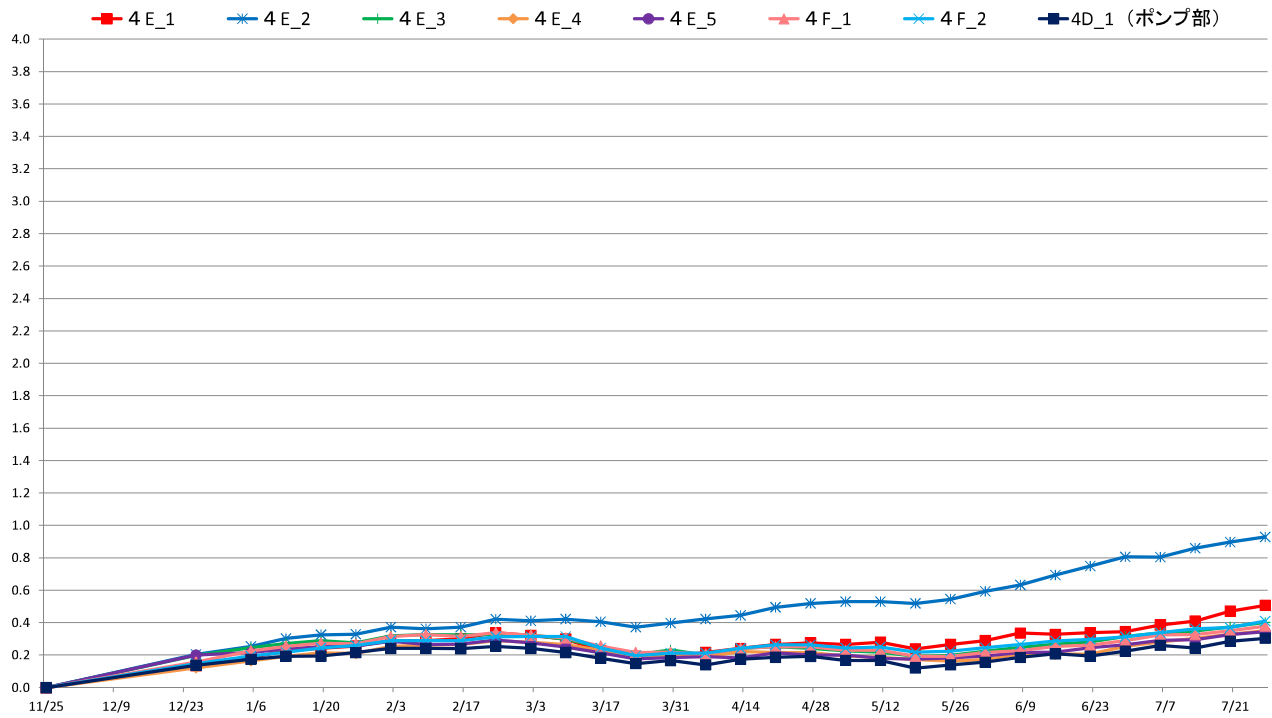


- 凡例**
- 事業区域
 - 排水溝
 - マンホール
 - MH^注ソフ部(沈下計):7箇所
 - MH部(水位計, 沈下計):38箇所 (P部含む)
 - 民地部(水位計, 沈下計, 水圧計):14箇所
 - 既設水位観測孔(水位計):4箇所
 - 新設水位観測孔(水位計):5箇所

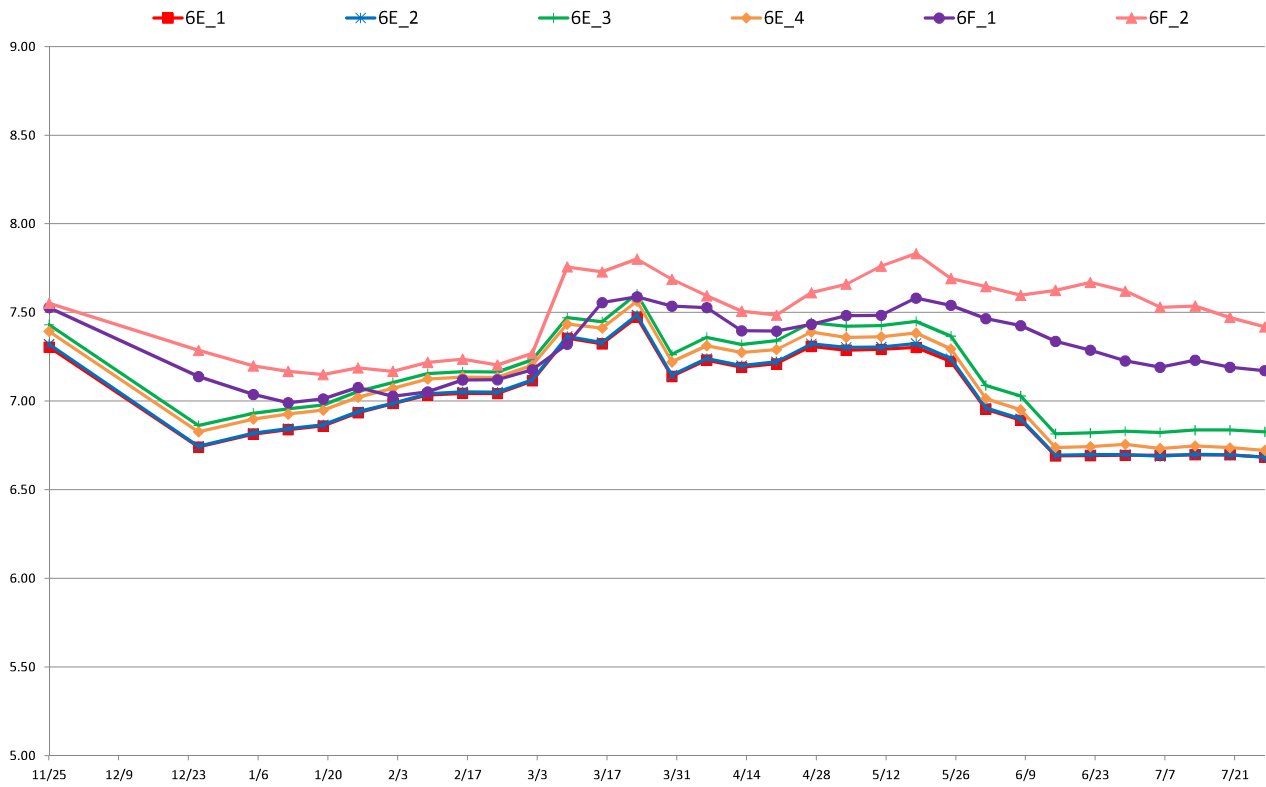
4丁目水位 (T.P+m)



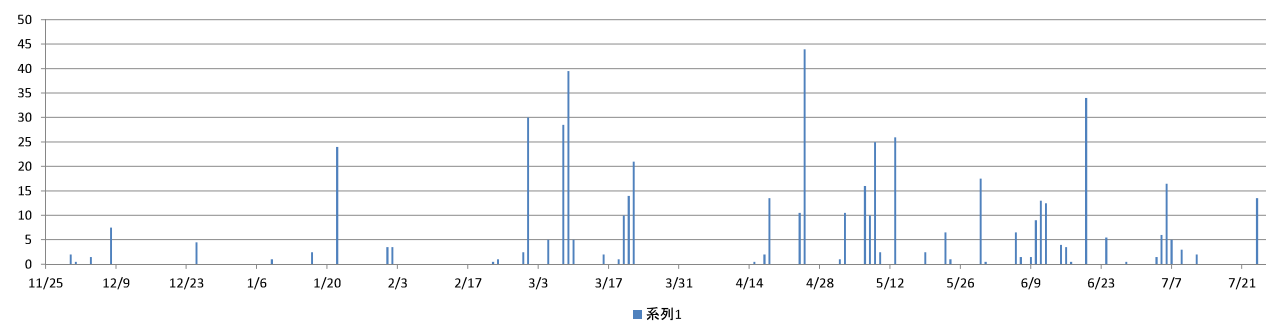
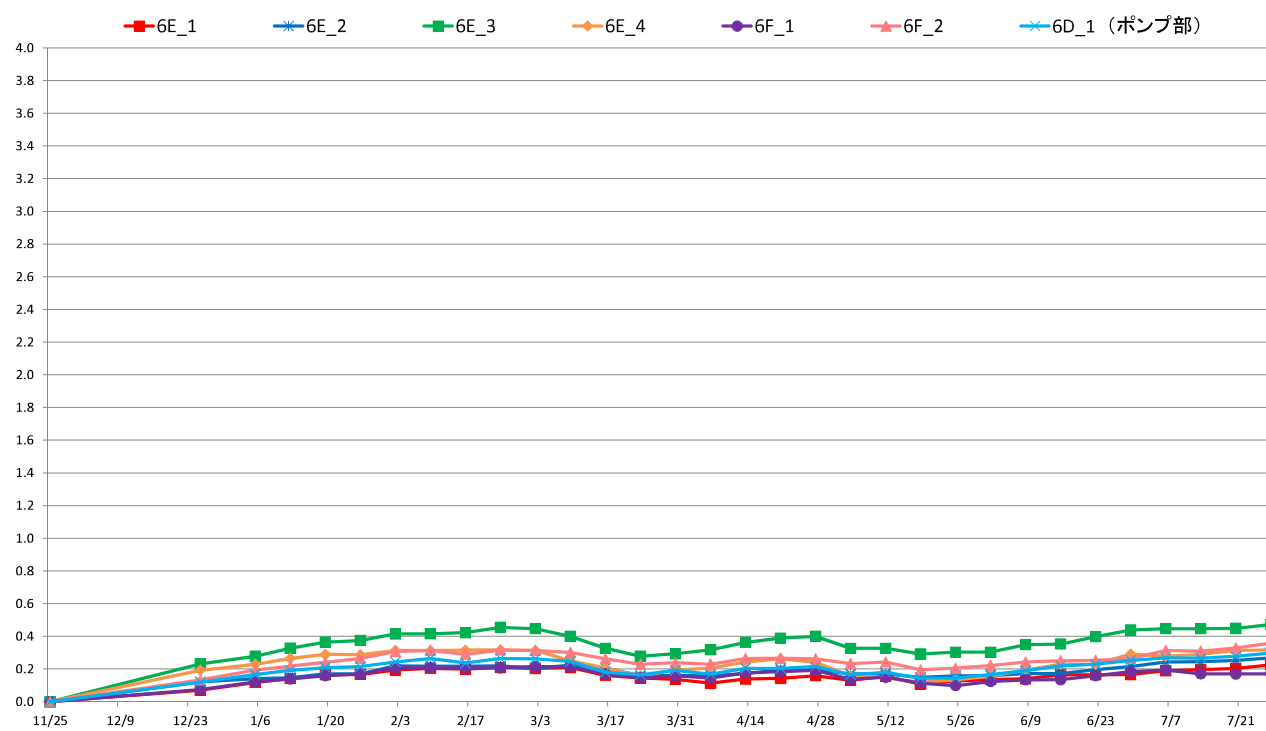
4丁目沈下 (G.L-cm)



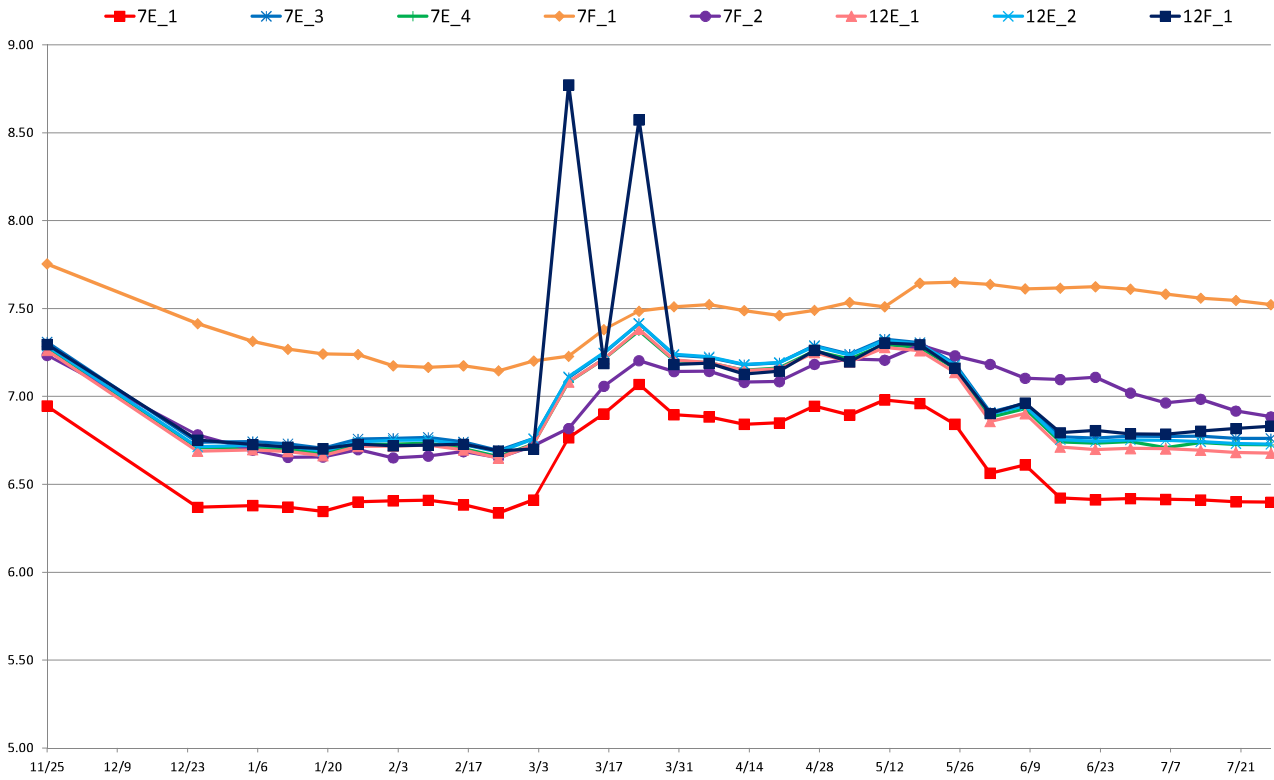
6丁目水位 (T.P+m)



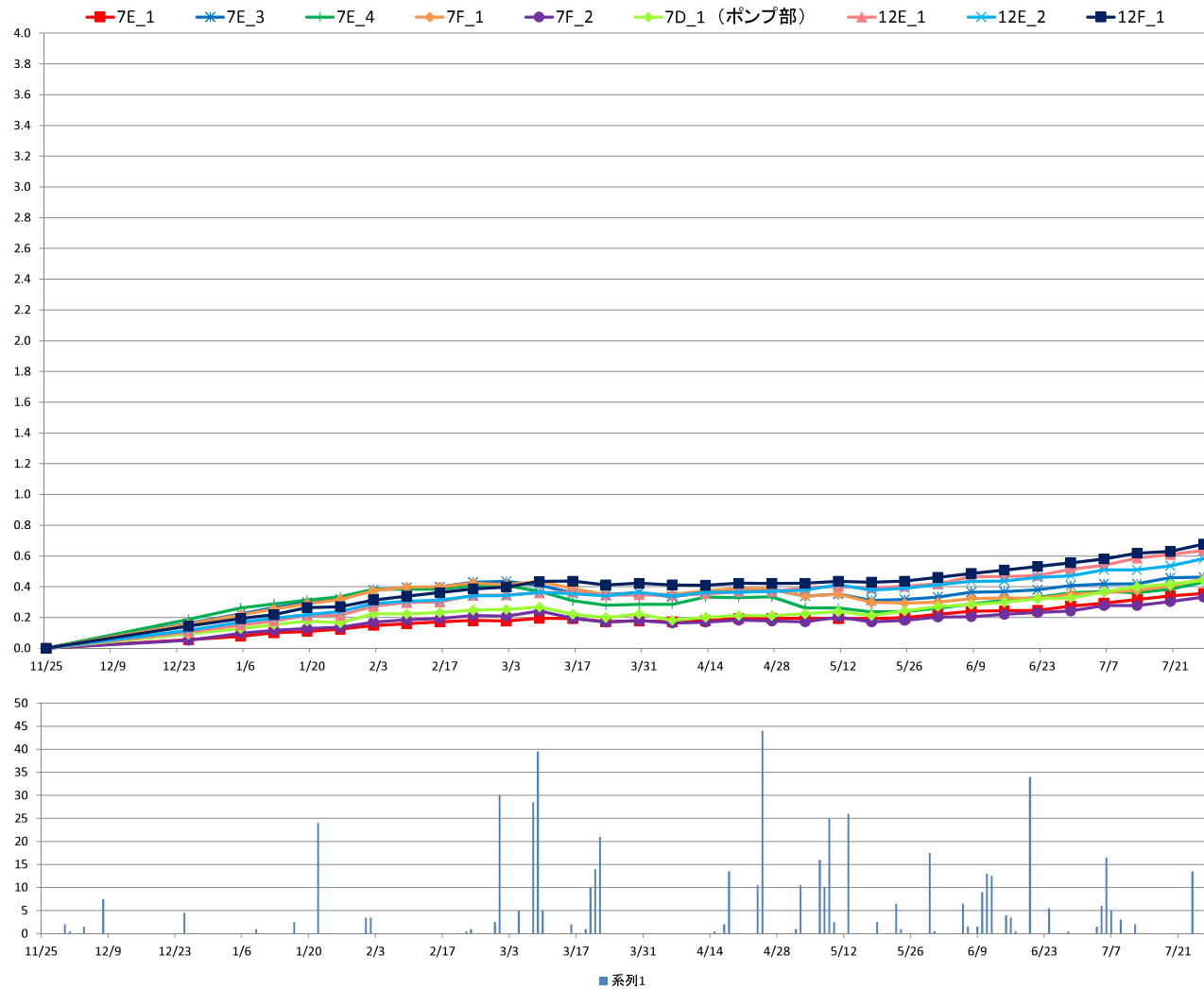
6丁目沈下 (G.L-cm)



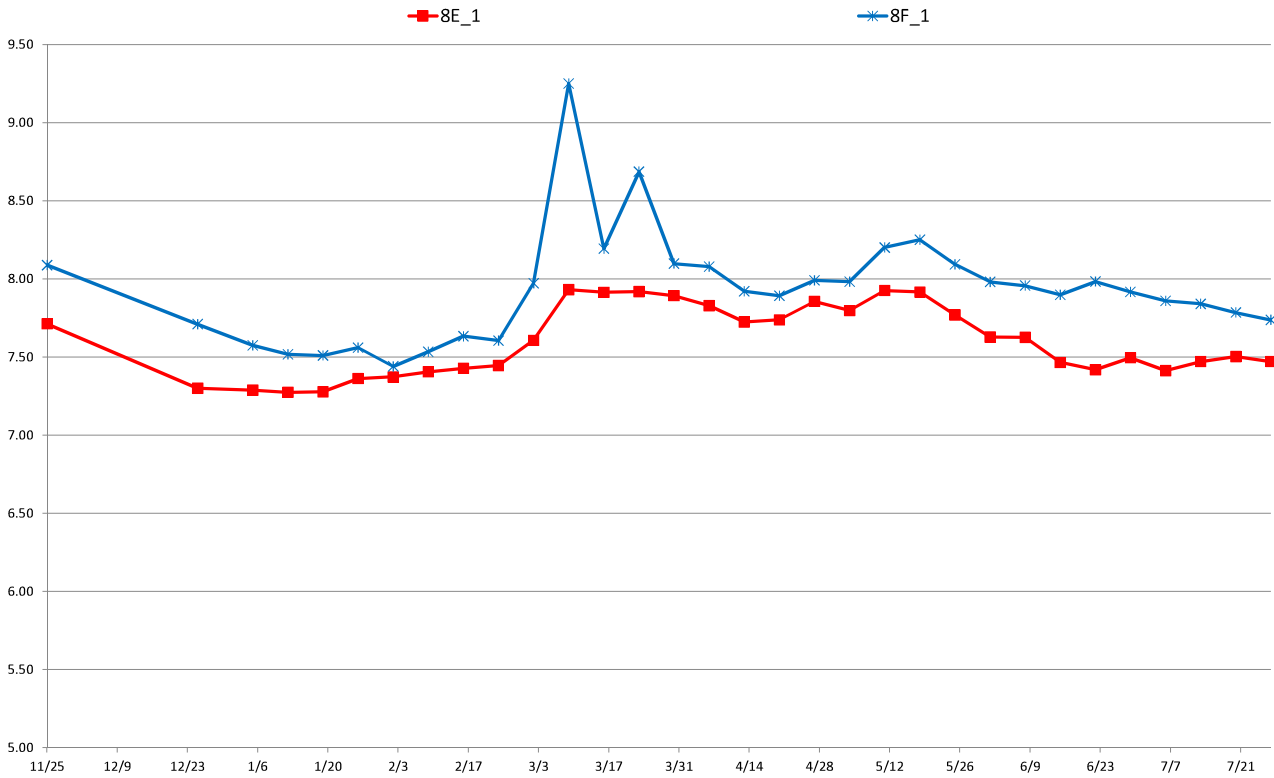
7・12丁目水位 (T.P+m)



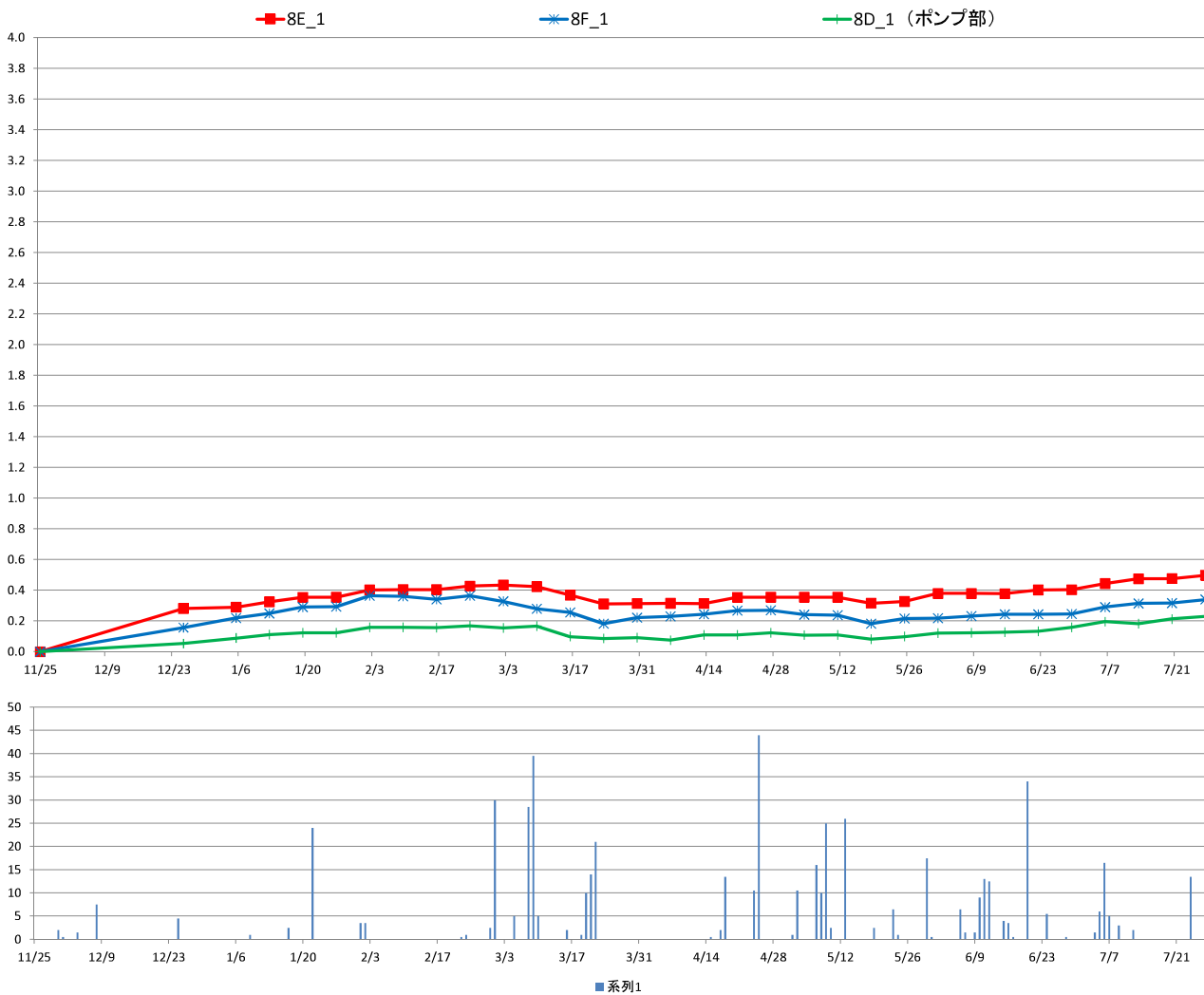
7・12丁目沈下 (G.L-cm)



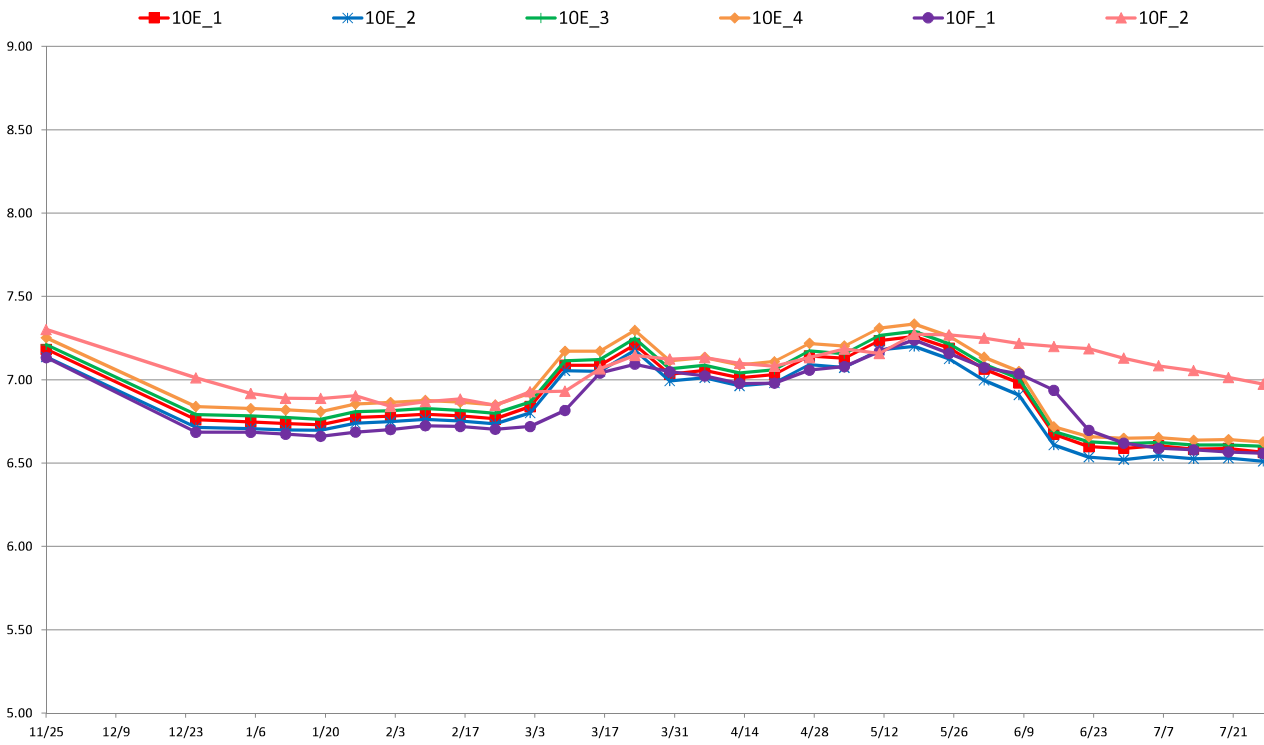
8丁目水位 (T.P.+m)



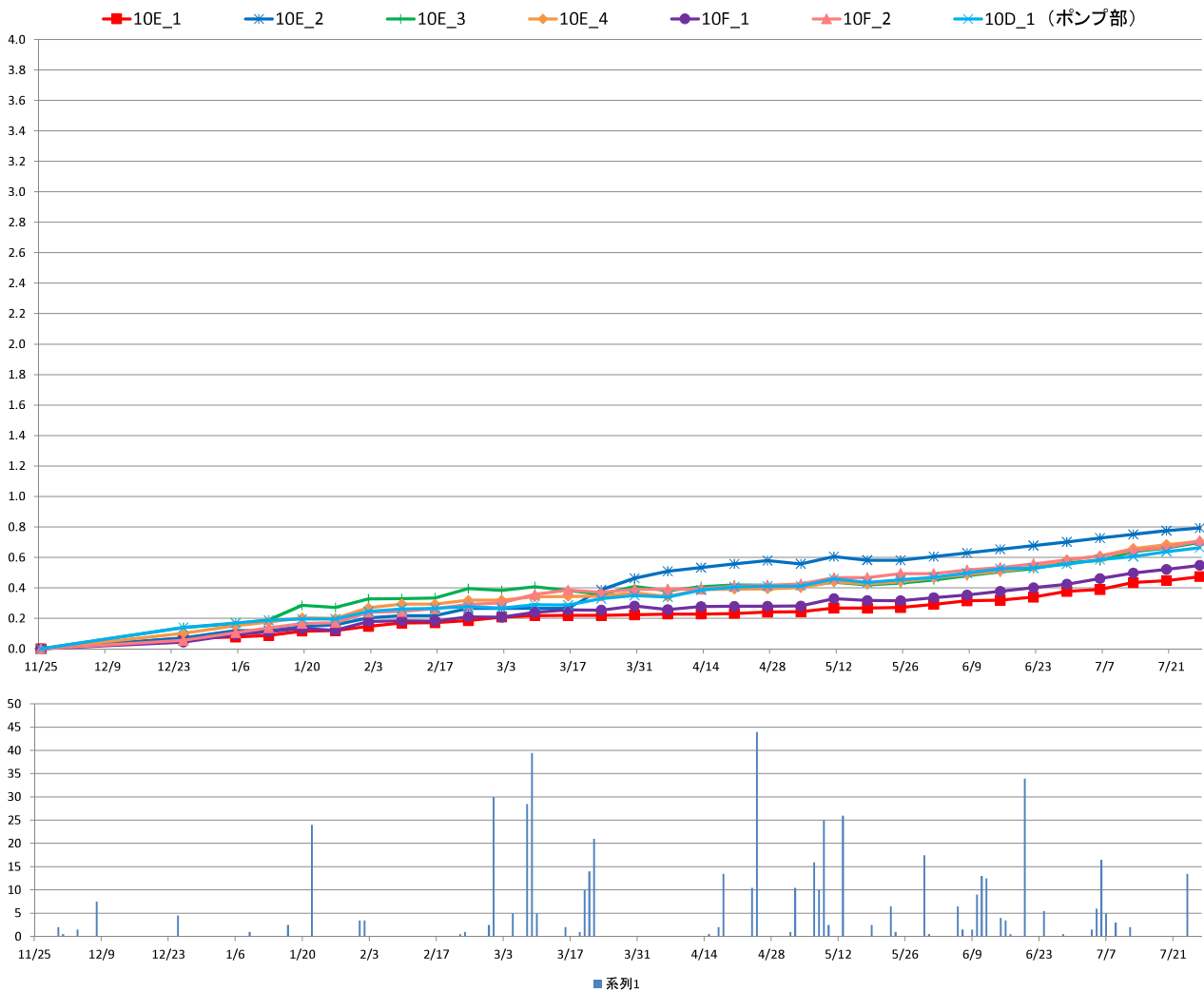
8丁目沈下 (G.L.-cm)



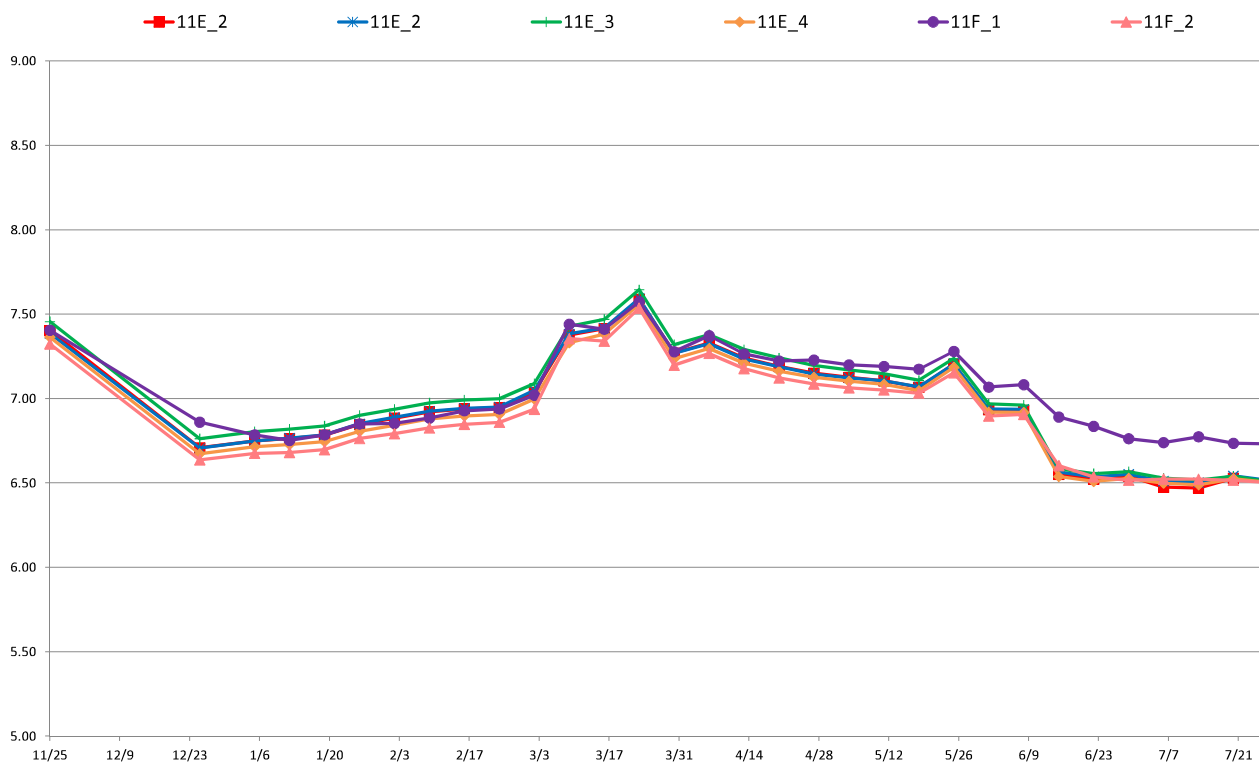
10丁目水位 (T.P+m)



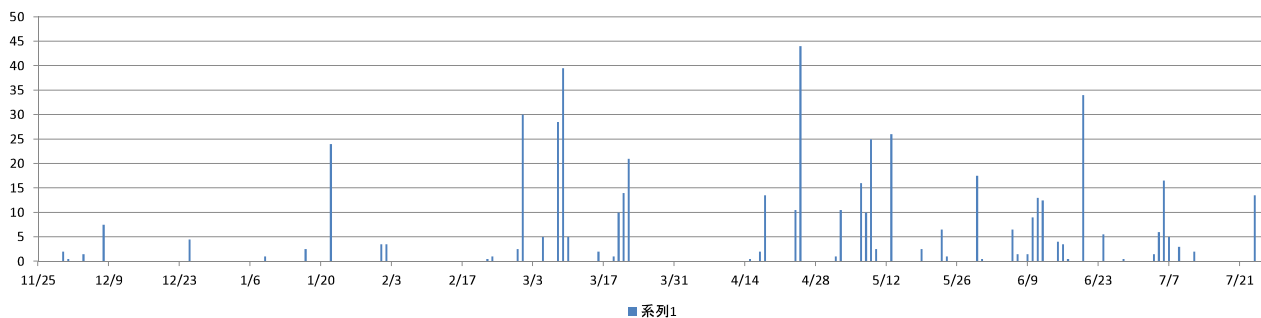
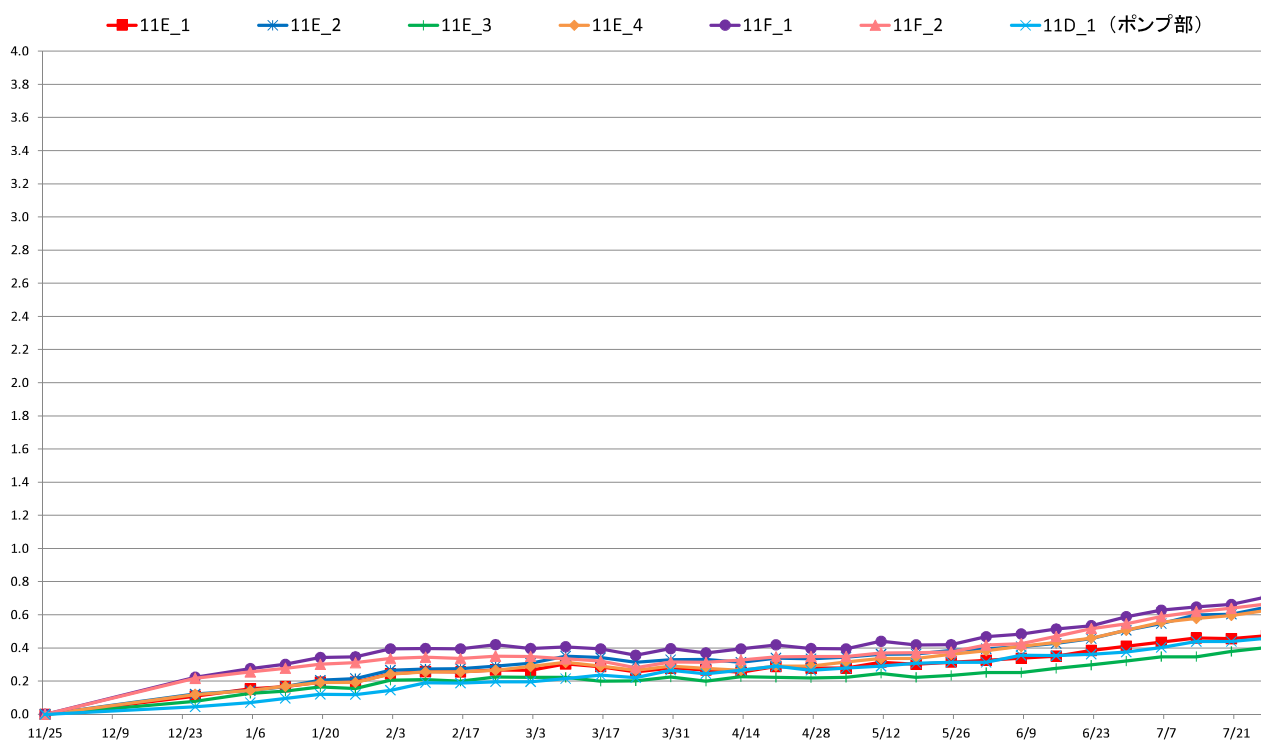
10丁目沈下 (G.L-cm)



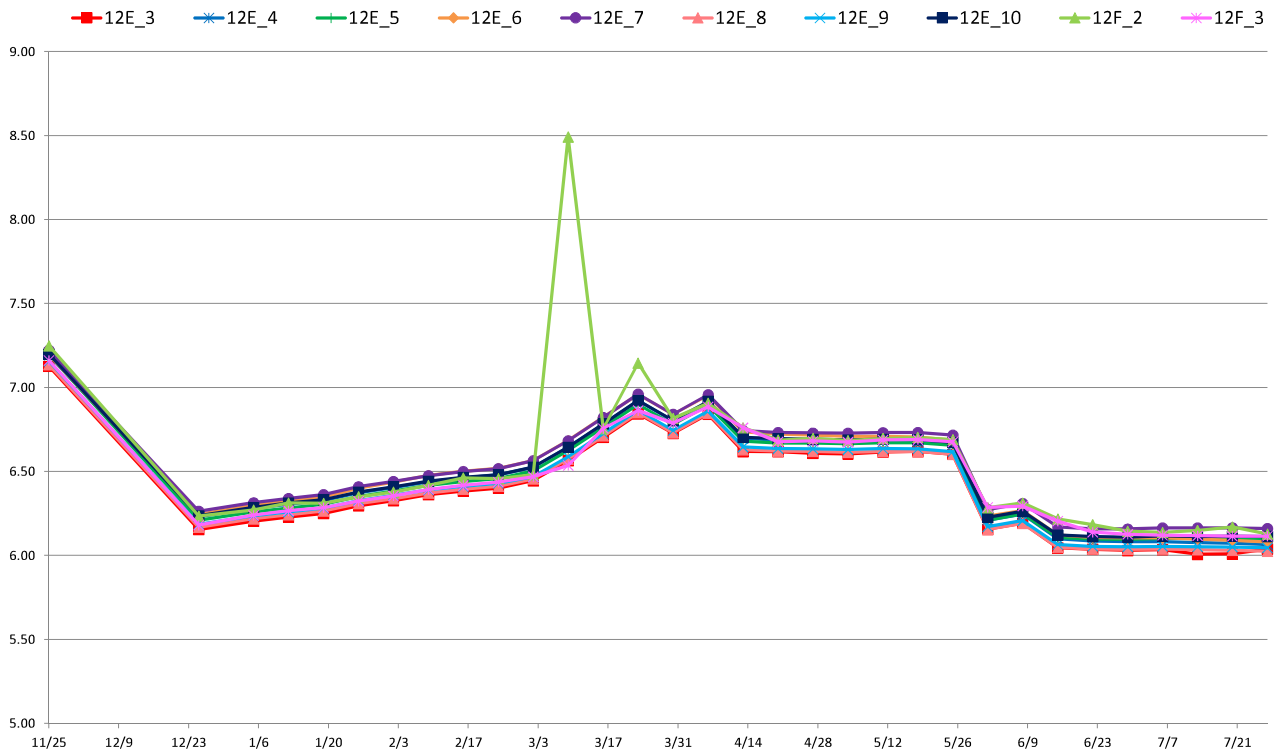
1 1 丁目水位 (T.P+m)



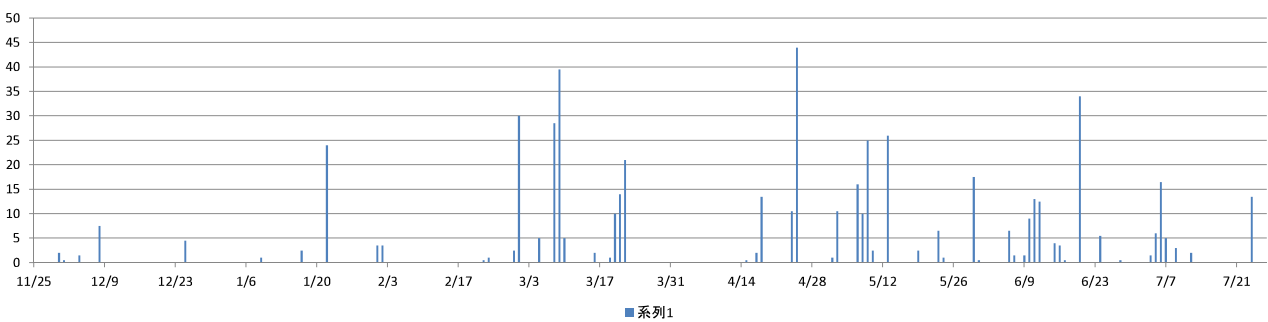
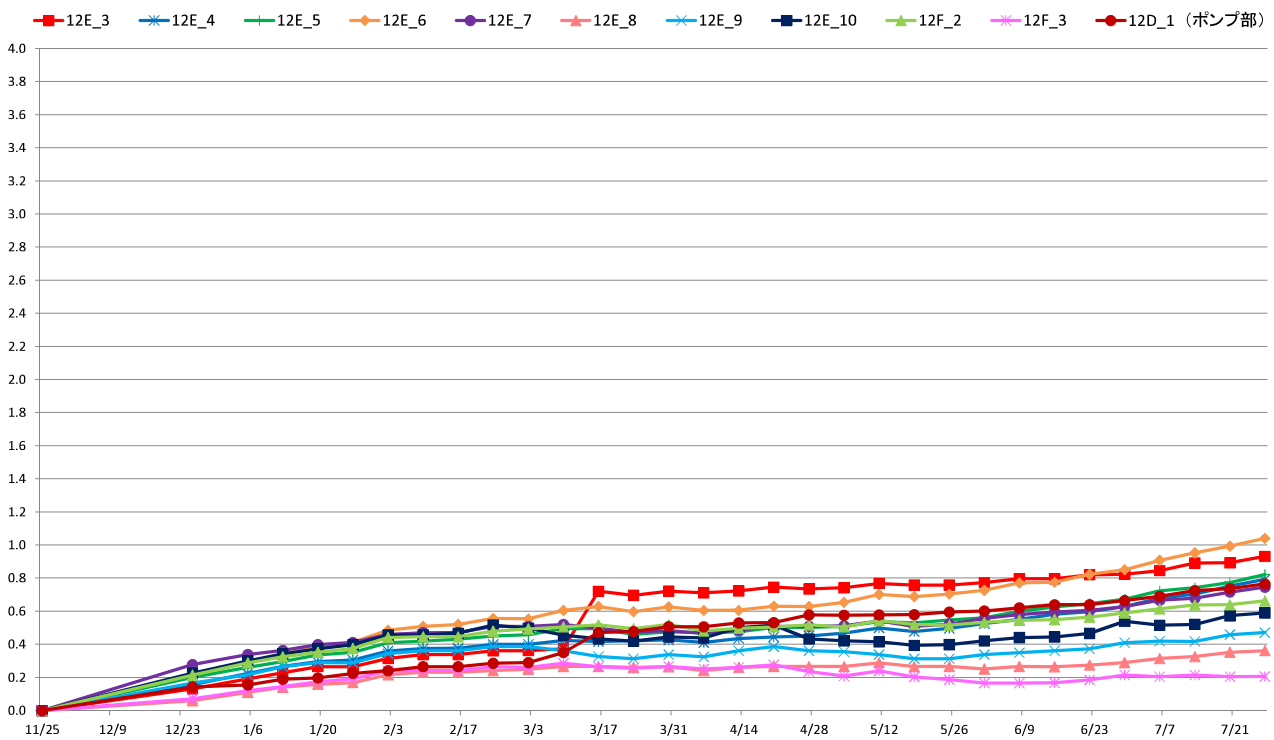
1 1 丁目沈下 (G.L-cm)



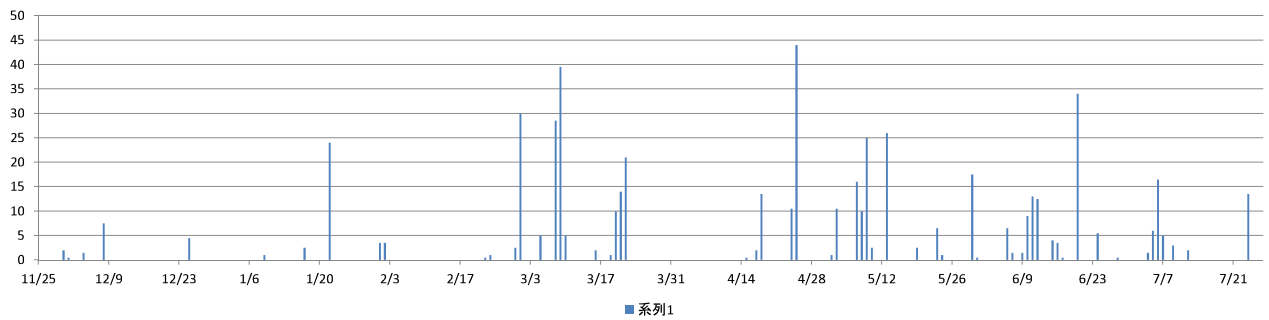
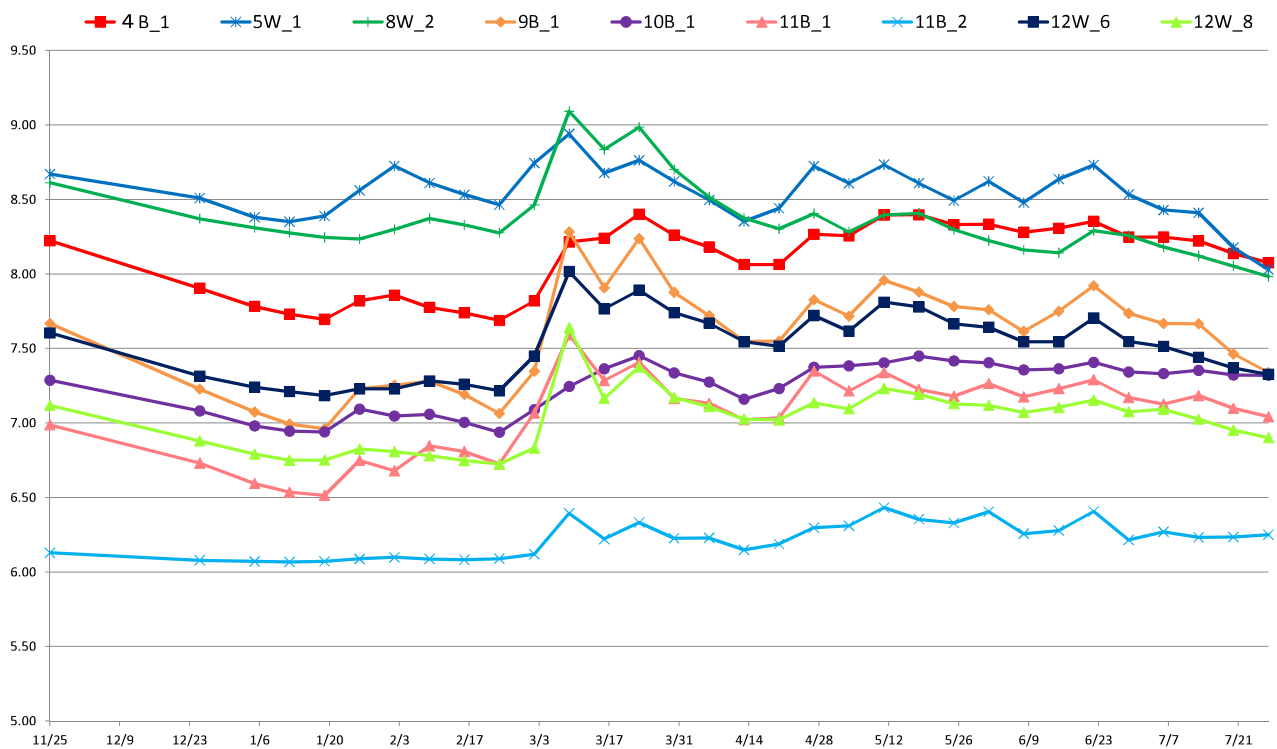
1 2丁目水位 (T.P+m)



1 2丁目沈下 (G.L-cm)



对策範囲外水位 (T.P+m)



[地下水位]

| 事業区域名 | 4丁目(民地部) | | | |
|-----------------------|-----------------|---------------|-----------------|---------------|
| 計測地点名 | 4F_1 | | 4F_2 | |
| 計測地点地盤高 (T.P.m) | 9.14 | | 9.26 | |
| 計測日 | 地下水位 (T.P.m) | 地下水位 (GLm) | 地下水位 (T.P.m) | 地下水位 (GLm) |
| 2017/11/25 12:00 | 8.40 | -0.736 | 8.13 | -1.127 |
| 2017/12/25 12:00 | 7.91 | -1.231 | 7.90 | -1.356 |
| 2018/1/5 12:00 | 7.78 | -1.363 | 7.80 | -1.457 |
| 2018/1/12 12:00 | 7.75 | -1.391 | 7.76 | -1.495 |
| 2018/1/19 12:00 | 7.76 | -1.376 | 7.78 | -1.484 |
| 2018/1/26 12:00 | 8.34 | -0.797 | 7.84 | -1.425 |
| 2018/2/2 12:00 | 8.45 | -0.687 | 7.78 | -1.480 |
| 2018/2/9 12:00 | 8.34 | -0.803 | 7.81 | -1.449 |
| 2018/2/16 12:00 | 8.34 | -0.801 | 7.85 | -1.407 |
| 2018/2/23 12:00 | 7.81 | -1.329 | 7.83 | -1.433 |
| 2018/3/2 12:00 | 8.42 | -0.723 | 7.92 | -1.339 |
| 2018/3/9 12:00 | 8.65 | -0.495 | 8.05 | -1.208 |
| 2018/3/16 12:00 | 8.50 | -0.642 | 8.24 | -1.016 |
| 2018/3/23 12:00 | 8.58 | -0.562 | 8.30 | -0.960 |
| 2018/3/30 12:00 | 8.48 | -0.657 | 8.23 | -1.034 |
| 2018/4/6 12:00 | 8.42 | -0.716 | 8.22 | -1.042 |
| 2018/4/13 12:00 | 8.40 | -0.737 | 8.10 | -1.158 |
| 2018/4/20 12:00 | 8.42 | -0.723 | 8.09 | -1.166 |
| 2018/4/27 12:00 | 8.47 | -0.671 | 8.16 | -1.100 |
| 2018/5/4 12:00 | 8.47 | -0.673 | 8.20 | -1.058 |
| 2018/5/11 12:00 | 8.52 | -0.624 | 8.23 | -1.029 |
| 2018/5/18 12:00 | 8.51 | -0.627 | 8.33 | -0.932 |
| 2018/5/25 12:00 | 8.49 | -0.647 | 8.27 | -0.993 |
| 2018/6/1 12:00 | 8.49 | -0.654 | 8.22 | -1.038 |
| 2018/6/8 12:00 | 8.45 | -0.686 | 8.19 | -1.073 |
| 2018/6/15 12:00 | 8.45 | -0.689 | 8.12 | -1.138 |
| 2018/6/22 12:00 | 8.45 | -0.691 | 8.11 | -1.155 |
| 2018/6/29 12:00 | 8.40 | -0.744 | 8.05 | -1.205 |
| 2018/7/6 12:00 | 8.53 | -0.605 | 8.00 | -1.263 |
| 2018/7/13 12:00 | 8.39 | -0.752 | 8.00 | -1.262 |
| 2018/7/20 12:00 | 8.03 | -1.105 | 7.94 | -1.318 |
| 2018/7/27 12:00 | 7.97 | -1.174 | 7.91 | -1.354 |
| 1段階目水位 2018/2/24まで | 7.84 | -1.30 | 7.84 | -1.42 |
| 2段階目水位 2018/5/24まで | 7.75 | -1.39 | 7.75 | -1.51 |
| 最終水位 2018/8/24まで | 7.66 | -1.48 | 7.66 | -1.60 |

[地下水位]

| 事業区域名 計測地点名 | 4丁目(道路部) | | | | | | | | | |
|--------------------|-----------------|---------------|-----------------|---------------|-----------------|---------------|-----------------|---------------|-----------------|---------------|
| | 4E_1 | | 4E_2 | | 4E_3 | | 4E_4 | | 4E_5 | |
| 計測地点地盤高 (T.P.m) | 9.18 | | 9.30 | | 9.08 | | 8.85 | | 9.23 | |
| 計測日 | 地下水位 (T.P.m) | 地下水位 (GLm) | 地下水位 (T.P.m) | 地下水位 (GLm) | 地下水位 (T.P.m) | 地下水位 (GLm) | 地下水位 (T.P.m) | 地下水位 (GLm) | 地下水位 (T.P.m) | 地下水位 (GLm) |
| 2017/11/25 12:00 | 7.92 | -1.257 | 7.98 | -1.316 | 7.98 | -1.104 | 7.28 | -1.571 | 8.00 | -1.232 |
| 2017/12/25 12:00 | 7.58 | -1.604 | 7.64 | -1.660 | 7.63 | -1.455 | 6.94 | -1.909 | 7.65 | -1.582 |
| 2018/1/5 12:00 | 7.64 | -1.535 | 7.71 | -1.591 | 7.69 | -1.386 | 7.01 | -1.839 | 7.72 | -1.515 |
| 2018/1/12 12:00 | 7.67 | -1.511 | 7.73 | -1.571 | 7.71 | -1.366 | 7.03 | -1.816 | 7.74 | -1.493 |
| 2018/1/19 12:00 | 7.71 | -1.474 | 7.77 | -1.532 | 7.75 | -1.329 | 7.07 | -1.779 | 7.77 | -1.457 |
| 2018/1/26 12:00 | 7.79 | -1.388 | 7.85 | -1.449 | 7.83 | -1.247 | 7.15 | -1.695 | 7.86 | -1.371 |
| 2018/2/2 12:00 | 7.82 | -1.364 | 7.88 | -1.424 | 7.86 | -1.221 | 7.18 | -1.670 | 7.88 | -1.348 |
| 2018/2/9 12:00 | 7.82 | -1.360 | 7.88 | -1.421 | 7.86 | -1.220 | 7.18 | -1.667 | 7.88 | -1.346 |
| 2018/2/16 12:00 | 7.82 | -1.356 | 7.88 | -1.417 | 7.86 | -1.215 | 7.19 | -1.664 | 7.89 | -1.341 |
| 2018/2/23 12:00 | 7.81 | -1.367 | 7.87 | -1.428 | 7.85 | -1.225 | 7.18 | -1.674 | 7.88 | -1.352 |
| 2018/3/2 12:00 | 7.88 | -1.301 | 7.94 | -1.359 | 7.92 | -1.158 | 7.24 | -1.606 | 7.95 | -1.283 |
| 2018/3/9 12:00 | 8.11 | -1.070 | 8.17 | -1.125 | 8.15 | -0.928 | 7.47 | -1.378 | 8.18 | -1.049 |
| 2018/4/20 12:00 | 7.98 | -1.199 | 8.04 | -1.258 | 8.03 | -1.050 | 7.36 | -1.489 | 8.06 | -1.169 |
| 2018/4/27 12:00 | 8.08 | -1.099 | 8.14 | -1.158 | 8.13 | -0.949 | 7.46 | -1.387 | 8.16 | -1.066 |
| 2018/5/4 12:00 | 8.06 | -1.118 | 8.12 | -1.179 | 8.11 | -0.969 | 7.44 | -1.406 | 8.14 | -1.087 |
| 2018/5/11 12:00 | 8.16 | -1.022 | 8.21 | -1.085 | 8.21 | -0.870 | 7.54 | -1.305 | 8.24 | -0.987 |
| 2018/5/18 12:00 | 8.16 | -1.021 | 8.21 | -1.085 | 8.21 | -0.875 | 7.54 | -1.306 | 8.24 | -0.989 |
| 2018/5/25 12:00 | 8.09 | -1.087 | 8.15 | -1.152 | 8.14 | -0.941 | 7.48 | -1.372 | 8.18 | -1.055 |
| 2018/6/1 12:00 | 7.96 | -1.223 | 8.01 | -1.290 | 8.00 | -1.077 | 7.35 | -1.504 | 8.04 | -1.186 |
| 2018/6/8 12:00 | 7.88 | -1.295 | 7.93 | -1.366 | 7.93 | -1.154 | 7.27 | -1.576 | 7.97 | -1.259 |
| 2018/6/15 12:00 | 7.59 | -1.591 | 7.64 | -1.657 | 7.63 | -1.454 | 6.97 | -1.880 | 7.67 | -1.559 |
| 2018/6/22 12:00 | 7.60 | -1.581 | 7.65 | -1.654 | 7.64 | -1.440 | 6.98 | -1.868 | 7.69 | -1.544 |
| 2018/6/29 12:00 | 7.59 | -1.588 | 7.64 | -1.657 | 7.62 | -1.463 | 6.96 | -1.887 | 7.67 | -1.562 |
| 2018/7/6 12:00 | 7.60 | -1.583 | 7.64 | -1.656 | 7.63 | -1.455 | 6.97 | -1.880 | 7.67 | -1.561 |
| 2018/7/13 12:00 | 7.60 | -1.580 | 7.64 | -1.657 | 7.63 | -1.451 | 6.98 | -1.869 | 7.69 | -1.540 |
| 2018/7/20 12:00 | 7.59 | -1.586 | 7.63 | -1.665 | 7.62 | -1.460 | 6.97 | -1.877 | 7.69 | -1.542 |
| 2018/7/27 12:00 | 7.59 | -1.587 | 7.63 | -1.667 | 7.62 | -1.458 | 6.97 | -1.877 | 7.69 | -1.541 |

[沈下量]

| 事業区域名 計測地点名 | 4丁目(民地部) | |
|------------------|-------------|-------------|
| | 4F_1 | 4F_2 |
| 計測日 | 沈下量 (cm) | 沈下量 (cm) |
| 2017/11/25 12:00 | 0.0 | 0.0 |
| 2017/12/25 12:00 | 0.2 | 0.1 |
| 2018/1/5 12:00 | 0.2 | 0.2 |
| 2018/1/12 12:00 | 0.3 | 0.2 |
| 2018/1/19 12:00 | 0.3 | 0.2 |
| 2018/1/26 12:00 | 0.3 | 0.3 |
| 2018/2/2 12:00 | 0.3 | 0.3 |
| 2018/2/9 12:00 | 0.3 | 0.3 |
| 2018/2/16 12:00 | 0.3 | 0.3 |
| 2018/2/23 12:00 | 0.3 | 0.3 |
| 2018/3/2 12:00 | 0.3 | 0.3 |
| 2018/3/9 12:00 | 0.3 | 0.3 |
| 2018/3/16 12:00 | 0.3 | 0.2 |
| 2018/3/23 12:00 | 0.2 | 0.2 |
| 2018/3/30 12:00 | 0.2 | 0.2 |
| 2018/4/6 12:00 | 0.2 | 0.2 |
| 2018/4/13 12:00 | 0.2 | 0.2 |
| 2018/4/20 12:00 | 0.3 | 0.3 |
| 2018/4/27 12:00 | 0.3 | 0.3 |
| 2018/5/4 12:00 | 0.2 | 0.2 |
| 2018/5/11 12:00 | 0.2 | 0.3 |
| 2018/5/18 12:00 | 0.2 | 0.2 |
| 2018/5/25 12:00 | 0.2 | 0.2 |
| 2018/6/1 12:00 | 0.2 | 0.2 |
| 2018/6/8 12:00 | 0.2 | 0.3 |
| 2018/6/15 12:00 | 0.3 | 0.3 |
| 2018/6/22 12:00 | 0.3 | 0.3 |
| 2018/6/29 12:00 | 0.3 | 0.3 |
| 2018/7/6 12:00 | 0.3 | 0.3 |
| 2018/7/13 12:00 | 0.3 | 0.4 |
| 2018/7/20 12:00 | 0.4 | 0.4 |
| 2018/7/27 12:00 | 0.4 | 0.4 |

[沈下量]

| 事業区域名 計測地点名 | 4丁目(道路部) | | | | | |
|------------------|-------------|-------------|-------------|-------------|-------------|-------------|
| | 4E_1 | 4E_2 | 4E_3 | 4E_4 | 4E_5 | 4D_1(ポンプ部) |
| 計測日 | 沈下量 (cm) | 沈下量 (cm) | 沈下量 (cm) | 沈下量 (cm) | 沈下量 (cm) | 沈下量 (cm) |
| 2017/11/25 12:00 | 0.0 | 0.0 | 0.0 | 0.0 | 0.0 | 0.0 |
| 2017/12/25 12:00 | 0.1 | 0.2 | 0.2 | 0.1 | 0.2 | 0.1 |
| 2018/1/5 12:00 | 0.2 | 0.3 | 0.2 | 0.2 | 0.2 | 0.2 |
| 2018/1/12 12:00 | 0.2 | 0.3 | 0.3 | 0.2 | 0.2 | 0.2 |
| 2018/1/19 12:00 | 0.2 | 0.3 | 0.3 | 0.2 | 0.3 | 0.2 |
| 2018/1/26 12:00 | 0.3 | 0.3 | 0.3 | 0.2 | 0.3 | 0.2 |
| 2018/2/2 12:00 | 0.3 | 0.4 | 0.3 | 0.3 | 0.3 | 0.2 |
| 2018/2/9 12:00 | 0.3 | 0.4 | 0.3 | 0.3 | 0.3 | 0.2 |
| 2018/2/16 12:00 | 0.3 | 0.4 | 0.3 | 0.3 | 0.3 | 0.2 |
| 2018/2/23 12:00 | 0.3 | 0.4 | 0.3 | 0.3 | 0.3 | 0.3 |
| 2018/3/2 12:00 | 0.3 | 0.4 | 0.3 | 0.3 | 0.3 | 0.2 |
| 2018/3/9 12:00 | 0.3 | 0.4 | 0.3 | 0.3 | 0.3 | 0.2 |
| 2018/3/16 12:00 | 0.2 | 0.4 | 0.3 | 0.2 | 0.2 | 0.2 |
| 2018/3/23 12:00 | 0.2 | 0.4 | 0.2 | 0.2 | 0.2 | 0.1 |
| 2018/3/30 12:00 | 0.2 | 0.4 | 0.2 | 0.2 | 0.2 | 0.2 |
| 2018/4/6 12:00 | 0.2 | 0.4 | 0.2 | 0.2 | 0.2 | 0.1 |
| 2018/4/13 12:00 | 0.2 | 0.4 | 0.2 | 0.2 | 0.2 | 0.2 |
| 2018/4/20 12:00 | 0.3 | 0.5 | 0.3 | 0.2 | 0.2 | 0.2 |
| 2018/4/27 12:00 | 0.3 | 0.5 | 0.2 | 0.2 | 0.2 | 0.2 |
| 2018/5/4 12:00 | 0.3 | 0.5 | 0.2 | 0.2 | 0.2 | 0.2 |
| 2018/5/11 12:00 | 0.3 | 0.5 | 0.2 | 0.2 | 0.2 | 0.2 |
| 2018/5/18 12:00 | 0.2 | 0.5 | 0.2 | 0.2 | 0.2 | 0.1 |
| 2018/5/25 12:00 | 0.3 | 0.5 | 0.2 | 0.2 | 0.2 | 0.1 |
| 2018/6/1 12:00 | 0.3 | 0.6 | 0.2 | 0.2 | 0.2 | 0.2 |
| 2018/6/8 12:00 | 0.3 | 0.6 | 0.2 | 0.2 | 0.2 | 0.2 |
| 2018/6/15 12:00 | 0.3 | 0.7 | 0.3 | 0.2 | 0.2 | 0.2 |
| 2018/6/22 12:00 | 0.3 | 0.7 | 0.3 | 0.2 | 0.2 | 0.2 |
| 2018/6/29 12:00 | 0.3 | 0.8 | 0.3 | 0.3 | 0.3 | 0.2 |
| 2018/7/6 12:00 | 0.4 | 0.8 | 0.3 | 0.3 | 0.3 | 0.3 |
| 2018/7/13 12:00 | 0.4 | 0.9 | 0.3 | 0.3 | 0.3 | 0.2 |
| 2018/7/20 12:00 | 0.5 | 0.9 | 0.4 | 0.3 | 0.3 | 0.3 |
| 2018/7/27 12:00 | 0.5 | 0.9 | 0.4 | 0.4 | 0.3 | 0.3 |

[地下水位]

| 事業区域名 | 6丁目(民地部) | | | |
|-----------------------|-----------------|---------------|-----------------|---------------|
| 計測地点名 | 6F_1 | | 6F_2 | |
| 計測地点地盤高 (T.P.m) | 9.36 | | 9.37 | |
| 計測日 | 地下水位 (T.P.m) | 地下水位 (GLm) | 地下水位 (T.P.m) | 地下水位 (GLm) |
| 2017/11/25 12:00 | 7.53 | -1.832 | 7.55 | -1.818 |
| 2017/12/25 12:00 | 7.14 | -2.221 | 7.29 | -2.083 |
| 2018/1/5 12:00 | 7.04 | -2.322 | 7.20 | -2.170 |
| 2018/1/12 12:00 | 6.99 | -2.368 | 7.17 | -2.201 |
| 2018/1/19 12:00 | 7.01 | -2.347 | 7.15 | -2.220 |
| 2018/1/26 12:00 | 7.08 | -2.283 | 7.19 | -2.182 |
| 2018/2/2 12:00 | 7.03 | -2.332 | 7.17 | -2.201 |
| 2018/2/9 12:00 | 7.05 | -2.308 | 7.22 | -2.151 |
| 2018/2/16 12:00 | 7.12 | -2.240 | 7.24 | -2.133 |
| 2018/2/23 12:00 | 7.12 | -2.239 | 7.20 | -2.165 |
| 2018/3/2 12:00 | 7.18 | -2.183 | 7.27 | -2.101 |
| 2018/3/9 12:00 | 7.32 | -2.038 | 7.76 | -1.612 |
| 2018/3/16 12:00 | 7.56 | -1.804 | 7.73 | -1.640 |
| 2018/3/23 12:00 | 7.59 | -1.771 | 7.80 | -1.568 |
| 2018/3/30 12:00 | 7.54 | -1.824 | 7.69 | -1.682 |
| 2018/4/6 12:00 | 7.53 | -1.832 | 7.60 | -1.775 |
| 2018/4/13 12:00 | 7.40 | -1.963 | 7.51 | -1.862 |
| 2018/4/20 12:00 | 7.40 | -1.964 | 7.49 | -1.885 |
| 2018/4/27 12:00 | 7.43 | -1.926 | 7.61 | -1.758 |
| 2018/5/4 12:00 | 7.48 | -1.877 | 7.66 | -1.710 |
| 2018/5/11 12:00 | 7.48 | -1.875 | 7.76 | -1.608 |
| 2018/5/18 12:00 | 7.58 | -1.778 | 7.83 | -1.537 |
| 2018/5/25 12:00 | 7.54 | -1.819 | 7.69 | -1.678 |
| 2018/6/1 12:00 | 7.47 | -1.894 | 7.65 | -1.723 |
| 2018/6/8 12:00 | 7.43 | -1.934 | 7.60 | -1.772 |
| 2018/6/15 12:00 | 7.34 | -2.022 | 7.63 | -1.744 |
| 2018/6/22 12:00 | 7.29 | -2.072 | 7.67 | -1.700 |
| 2018/6/29 12:00 | 7.23 | -2.133 | 7.62 | -1.749 |
| 2018/7/6 12:00 | 7.19 | -2.168 | 7.53 | -1.840 |
| 2018/7/13 12:00 | 7.23 | -2.129 | 7.54 | -1.833 |
| 2018/7/20 12:00 | 7.19 | -2.168 | 7.47 | -1.898 |
| 2018/7/27 12:00 | 7.17 | -2.188 | 7.42 | -1.951 |
| 1段階目水位 2018/2/24まで | 7.10 | -2.26 | 7.10 | -2.27 |
| 2段階目水位 2018/5/24まで | 6.90 | -2.46 | 6.90 | -2.47 |
| 最終水位 2018/8/24まで | 6.70 | -2.66 | 6.70 | -2.67 |

[地下水位]

| 事業区域名 計測地点名 | 6丁目(道路部) | | | | | | | |
|--------------------|-----------------|---------------|-----------------|---------------|-----------------|---------------|-----------------|---------------|
| | 6E_1 | | 6E_2 | | 6E_3 | | 6E_4 | |
| 計測地点地盤高 (T.P.m) | 8.82 | | 8.84 | | 8.79 | | 8.66 | |
| 計測日 | 地下水位 (T.P.m) | 地下水位 (GLm) | 地下水位 (T.P.m) | 地下水位 (GLm) | 地下水位 (T.P.m) | 地下水位 (GLm) | 地下水位 (T.P.m) | 地下水位 (GLm) |
| 2017/11/25 12:00 | 7.31 | -1.514 | 7.32 | -1.518 | 7.43 | -1.358 | 7.39 | -1.266 |
| 2017/12/25 12:00 | 6.74 | -2.078 | 6.75 | -2.094 | 6.86 | -1.926 | 6.83 | -1.833 |
| 2018/1/5 12:00 | 6.82 | -2.005 | 6.82 | -2.020 | 6.93 | -1.857 | 6.90 | -1.760 |
| 2018/1/12 12:00 | 6.84 | -1.980 | 6.84 | -1.995 | 6.96 | -1.832 | 6.93 | -1.732 |
| 2018/1/19 12:00 | 6.86 | -1.959 | 6.87 | -1.973 | 6.98 | -1.810 | 6.95 | -1.710 |
| 2018/1/26 12:00 | 6.94 | -1.885 | 6.94 | -1.899 | 7.05 | -1.736 | 7.02 | -1.637 |
| 2018/2/2 12:00 | 6.99 | -1.833 | 6.99 | -1.852 | 7.10 | -1.685 | 7.07 | -1.587 |
| 2018/2/9 12:00 | 7.04 | -1.784 | 7.04 | -1.798 | 7.16 | -1.635 | 7.13 | -1.534 |
| 2018/2/16 12:00 | 7.04 | -1.776 | 7.05 | -1.788 | 7.17 | -1.624 | 7.14 | -1.524 |
| 2018/2/23 12:00 | 7.04 | -1.777 | 7.05 | -1.789 | 7.17 | -1.625 | 7.13 | -1.525 |
| 2018/3/2 12:00 | 7.12 | -1.705 | 7.12 | -1.720 | 7.23 | -1.557 | 7.20 | -1.457 |
| 2018/3/9 12:00 | 7.36 | -1.465 | 7.37 | -1.475 | 7.47 | -1.318 | 7.44 | -1.225 |
| 2018/3/16 12:00 | 7.32 | -1.496 | 7.33 | -1.510 | 7.45 | -1.341 | 7.41 | -1.248 |
| 2018/3/23 12:00 | 7.47 | -1.346 | 7.49 | -1.354 | 7.60 | -1.185 | 7.56 | -1.095 |
| 2018/3/30 12:00 | 7.14 | -1.680 | 7.15 | -1.694 | 7.26 | -1.526 | 7.22 | -1.438 |
| 2018/4/6 12:00 | 7.23 | -1.588 | 7.24 | -1.599 | 7.36 | -1.431 | 7.31 | -1.346 |
| 2018/4/13 12:00 | 7.19 | -1.628 | 7.20 | -1.638 | 7.32 | -1.469 | 7.28 | -1.385 |
| 2018/4/20 12:00 | 7.21 | -1.609 | 7.22 | -1.618 | 7.34 | -1.449 | 7.29 | -1.369 |
| 2018/4/27 12:00 | 7.31 | -1.511 | 7.32 | -1.516 | 7.44 | -1.347 | 7.39 | -1.270 |
| 2018/5/4 12:00 | 7.29 | -1.533 | 7.30 | -1.537 | 7.42 | -1.367 | 7.36 | -1.299 |
| 2018/5/11 12:00 | 7.29 | -1.527 | 7.31 | -1.534 | 7.43 | -1.364 | 7.36 | -1.297 |
| 2018/5/18 12:00 | 7.30 | -1.516 | 7.33 | -1.514 | 7.45 | -1.340 | 7.38 | -1.275 |
| 2018/5/25 12:00 | 7.23 | -1.595 | 7.24 | -1.599 | 7.37 | -1.422 | 7.29 | -1.365 |
| 2018/6/1 12:00 | 6.96 | -1.864 | 6.96 | -1.877 | 7.09 | -1.700 | 7.02 | -1.644 |
| 2018/6/8 12:00 | 6.89 | -1.926 | 6.90 | -1.939 | 7.03 | -1.761 | 6.95 | -1.708 |
| 2018/6/15 12:00 | 6.69 | -2.128 | 6.70 | -2.145 | 6.82 | -1.974 | 6.74 | -1.921 |
| 2018/6/22 12:00 | 6.69 | -2.126 | 6.70 | -2.142 | 6.82 | -1.969 | 6.74 | -1.916 |
| 2018/6/29 12:00 | 6.69 | -2.125 | 6.70 | -2.141 | 6.83 | -1.960 | 6.76 | -1.903 |
| 2018/7/6 12:00 | 6.69 | -2.125 | 6.69 | -2.150 | 6.82 | -1.967 | 6.73 | -1.927 |
| 2018/7/13 12:00 | 6.70 | -2.122 | 6.70 | -2.140 | 6.84 | -1.953 | 6.75 | -1.912 |
| 2018/7/20 12:00 | 6.70 | -2.122 | 6.70 | -2.144 | 6.84 | -1.953 | 6.74 | -1.922 |
| 2018/7/27 12:00 | 6.69 | -2.135 | 6.68 | -2.156 | 6.83 | -1.963 | 6.72 | -1.937 |

[沈下量]

| 事業区域名 計測地点名 | 6丁目(民地部) | |
|------------------|-------------|-------------|
| | 6F_1 | 6F_2 |
| 計測日 | 沈下量 (cm) | 沈下量 (cm) |
| 2017/11/25 12:00 | 0.0 | 0.0 |
| 2017/12/25 12:00 | 0.1 | 0.1 |
| 2018/1/5 12:00 | 0.1 | 0.2 |
| 2018/1/12 12:00 | 0.1 | 0.2 |
| 2018/1/19 12:00 | 0.2 | 0.2 |
| 2018/1/26 12:00 | 0.2 | 0.3 |
| 2018/2/2 12:00 | 0.2 | 0.3 |
| 2018/2/9 12:00 | 0.2 | 0.3 |
| 2018/2/16 12:00 | 0.2 | 0.3 |
| 2018/2/23 12:00 | 0.2 | 0.3 |
| 2018/3/2 12:00 | 0.2 | 0.3 |
| 2018/3/9 12:00 | 0.2 | 0.3 |
| 2018/3/16 12:00 | 0.2 | 0.3 |
| 2018/3/23 12:00 | 0.1 | 0.2 |
| 2018/3/30 12:00 | 0.2 | 0.2 |
| 2018/4/6 12:00 | 0.1 | 0.2 |
| 2018/4/13 12:00 | 0.2 | 0.3 |
| 2018/4/20 12:00 | 0.2 | 0.3 |
| 2018/4/27 12:00 | 0.2 | 0.3 |
| 2018/5/4 12:00 | 0.1 | 0.2 |
| 2018/5/11 12:00 | 0.2 | 0.2 |
| 2018/5/18 12:00 | 0.1 | 0.2 |
| 2018/5/25 12:00 | 0.1 | 0.2 |
| 2018/6/1 12:00 | 0.1 | 0.2 |
| 2018/6/8 12:00 | 0.1 | 0.2 |
| 2018/6/15 12:00 | 0.1 | 0.3 |
| 2018/6/22 12:00 | 0.2 | 0.3 |
| 2018/6/29 12:00 | 0.2 | 0.3 |
| 2018/7/6 12:00 | 0.2 | 0.3 |
| 2018/7/13 12:00 | 0.2 | 0.3 |
| 2018/7/20 12:00 | 0.2 | 0.3 |
| 2018/7/27 12:00 | 0.2 | 0.4 |

[沈下量]

| 事業区域名 計測地点名 | 6丁目(道路部) | | | | |
|------------------|-------------|-------------|-------------|-------------|-------------|
| | 6E_1 | 6E_2 | 6E_3 | 6E_4 | 6D_1(ポンプ部) |
| 計測日 | 沈下量 (cm) | 沈下量 (cm) | 沈下量 (cm) | 沈下量 (cm) | 沈下量 (cm) |
| 2017/11/25 12:00 | 0.0 | 0.0 | 0.0 | 0.0 | 0.0 |
| 2017/12/25 12:00 | 0.1 | 0.1 | 0.2 | 0.2 | 0.1 |
| 2018/1/5 12:00 | 0.1 | 0.1 | 0.3 | 0.2 | 0.2 |
| 2018/1/12 12:00 | 0.1 | 0.1 | 0.3 | 0.3 | 0.2 |
| 2018/1/19 12:00 | 0.2 | 0.2 | 0.4 | 0.3 | 0.2 |
| 2018/1/26 12:00 | 0.2 | 0.2 | 0.4 | 0.3 | 0.2 |
| 2018/2/2 12:00 | 0.2 | 0.2 | 0.4 | 0.3 | 0.2 |
| 2018/2/9 12:00 | 0.2 | 0.2 | 0.4 | 0.3 | 0.3 |
| 2018/2/16 12:00 | 0.2 | 0.2 | 0.4 | 0.3 | 0.2 |
| 2018/2/23 12:00 | 0.2 | 0.2 | 0.5 | 0.3 | 0.3 |
| 2018/3/2 12:00 | 0.2 | 0.2 | 0.4 | 0.3 | 0.3 |
| 2018/3/9 12:00 | 0.2 | 0.2 | 0.4 | 0.3 | 0.2 |
| 2018/3/16 12:00 | 0.2 | 0.2 | 0.3 | 0.2 | 0.2 |
| 2018/3/23 12:00 | 0.1 | 0.2 | 0.3 | 0.2 | 0.2 |
| 2018/3/30 12:00 | 0.1 | 0.2 | 0.3 | 0.2 | 0.2 |
| 2018/4/6 12:00 | 0.1 | 0.2 | 0.3 | 0.2 | 0.2 |
| 2018/4/13 12:00 | 0.1 | 0.2 | 0.4 | 0.2 | 0.2 |
| 2018/4/20 12:00 | 0.1 | 0.2 | 0.4 | 0.3 | 0.2 |
| 2018/4/27 12:00 | 0.2 | 0.2 | 0.4 | 0.2 | 0.2 |
| 2018/5/4 12:00 | 0.1 | 0.2 | 0.3 | 0.2 | 0.2 |
| 2018/5/11 12:00 | 0.2 | 0.2 | 0.3 | 0.1 | 0.2 |
| 2018/5/18 12:00 | 0.1 | 0.1 | 0.3 | 0.1 | 0.1 |
| 2018/5/25 12:00 | 0.1 | 0.2 | 0.3 | 0.1 | 0.1 |
| 2018/6/1 12:00 | 0.1 | 0.2 | 0.3 | 0.2 | 0.2 |
| 2018/6/8 12:00 | 0.1 | 0.2 | 0.3 | 0.2 | 0.2 |
| 2018/6/15 12:00 | 0.2 | 0.2 | 0.4 | 0.2 | 0.2 |
| 2018/6/22 12:00 | 0.2 | 0.2 | 0.4 | 0.2 | 0.2 |
| 2018/6/29 12:00 | 0.2 | 0.2 | 0.4 | 0.3 | 0.3 |
| 2018/7/6 12:00 | 0.2 | 0.2 | 0.4 | 0.3 | 0.3 |
| 2018/7/13 12:00 | 0.2 | 0.2 | 0.4 | 0.3 | 0.3 |
| 2018/7/20 12:00 | 0.2 | 0.3 | 0.4 | 0.3 | 0.3 |
| 2018/7/27 12:00 | 0.2 | 0.3 | 0.5 | 0.3 | 0.3 |

[地下水位]

| 事業区域名 | 7・12丁目(民地部) | | | |
|-----------------------|-----------------|---------------|-----------------|---------------|
| 計測地点名 | 7F_1 | | 7F_2 | |
| 計測地点地盤高 (T.P.m) | 9.31 | | 8.50 | |
| 計測日 | 地下水位 (T.P.m) | 地下水位 (GLm) | 地下水位 (T.P.m) | 地下水位 (GLm) |
| 2017/11/25 12:00 | 7.75 | -1.556 | 7.23 | -1.266 |
| 2017/12/25 12:00 | 7.41 | -1.896 | 6.78 | -1.718 |
| 2018/1/5 12:00 | 7.31 | -1.996 | 6.69 | -1.806 |
| 2018/1/12 12:00 | 7.27 | -2.042 | 6.65 | -1.846 |
| 2018/1/19 12:00 | 7.24 | -2.068 | 6.66 | -1.844 |
| 2018/1/26 12:00 | 7.24 | -2.071 | 6.70 | -1.802 |
| 2018/2/2 12:00 | 7.17 | -2.135 | 6.65 | -1.850 |
| 2018/2/9 12:00 | 7.17 | -2.145 | 6.66 | -1.839 |
| 2018/2/16 12:00 | 7.17 | -2.135 | 6.69 | -1.814 |
| 2018/2/23 12:00 | 7.15 | -2.164 | 6.65 | -1.849 |
| 2018/3/2 12:00 | 7.20 | -2.109 | 6.72 | -1.781 |
| 2018/3/9 12:00 | 7.23 | -2.081 | 6.82 | -1.682 |
| 2018/3/16 12:00 | 7.38 | -1.930 | 7.06 | -1.442 |
| 2018/3/23 12:00 | 7.49 | -1.825 | 7.20 | -1.296 |
| 2018/3/30 12:00 | 7.51 | -1.800 | 7.14 | -1.358 |
| 2018/4/6 12:00 | 7.52 | -1.787 | 7.14 | -1.357 |
| 2018/4/13 12:00 | 7.49 | -1.822 | 7.08 | -1.419 |
| 2018/4/20 12:00 | 7.46 | -1.850 | 7.08 | -1.415 |
| 2018/4/27 12:00 | 7.49 | -1.820 | 7.18 | -1.318 |
| 2018/5/4 12:00 | 7.54 | -1.775 | 7.21 | -1.288 |
| 2018/5/11 12:00 | 7.51 | -1.800 | 7.21 | -1.293 |
| 2018/5/18 12:00 | 7.64 | -1.666 | 7.29 | -1.207 |
| 2018/5/25 12:00 | 7.65 | -1.660 | 7.23 | -1.269 |
| 2018/6/1 12:00 | 7.64 | -1.672 | 7.18 | -1.318 |
| 2018/6/8 12:00 | 7.61 | -1.698 | 7.10 | -1.397 |
| 2018/6/15 12:00 | 7.62 | -1.694 | 7.10 | -1.403 |
| 2018/6/22 12:00 | 7.62 | -1.686 | 7.11 | -1.391 |
| 2018/6/29 12:00 | 7.61 | -1.700 | 7.02 | -1.480 |
| 2018/7/6 12:00 | 7.58 | -1.728 | 6.96 | -1.537 |
| 2018/7/13 12:00 | 7.56 | -1.751 | 6.98 | -1.516 |
| 2018/7/20 12:00 | 7.55 | -1.764 | 6.92 | -1.583 |
| 2018/7/27 12:00 | 7.52 | -1.788 | 6.88 | -1.616 |
| 1段階目水位 2018/2/24まで | 7.19 | -2.12 | 7.19 | -1.31 |
| 2段階目水位 2018/5/24まで | 7.15 | -2.17 | 7.15 | -1.36 |
| 最終水位 2018/8/24まで | 7.10 | -2.21 | 7.10 | -1.40 |

[地下水位]

| 事業区域名 | 7・12丁目(道路部) | | | | | |
|--------------------|-----------------|---------------|-----------------|---------------|-----------------|---------------|
| 計測地点名 | 7E_1 | | 7E_3 | | 7E_4 | |
| 計測地点地盤高 (T.P.m) | 8.88 | | 9.11 | | 8.92 | |
| 計測日 | 地下水位 (T.P.m) | 地下水位 (GLm) | 地下水位 (T.P.m) | 地下水位 (GLm) | 地下水位 (T.P.m) | 地下水位 (GLm) |
| 2017/11/25 12:00 | 6.95 | -1.934 | 7.31 | -1.801 | 7.28 | -1.640 |
| 2017/12/25 12:00 | 6.37 | -2.511 | 6.74 | -2.370 | 6.71 | -2.212 |
| 2018/1/5 12:00 | 6.38 | -2.501 | 6.74 | -2.367 | 6.71 | -2.211 |
| 2018/1/12 12:00 | 6.37 | -2.510 | 6.73 | -2.380 | 6.70 | -2.221 |
| 2018/1/19 12:00 | 6.35 | -2.534 | 6.70 | -2.405 | 6.67 | -2.246 |
| 2018/1/26 12:00 | 6.40 | -2.480 | 6.76 | -2.352 | 6.73 | -2.194 |
| 2018/2/2 12:00 | 6.41 | -2.474 | 6.76 | -2.348 | 6.73 | -2.191 |
| 2018/2/9 12:00 | 6.41 | -2.471 | 6.77 | -2.343 | 6.73 | -2.187 |
| 2018/2/16 12:00 | 6.38 | -2.496 | 6.74 | -2.369 | 6.70 | -2.217 |
| 2018/2/23 12:00 | 6.34 | -2.542 | 6.69 | -2.418 | 6.66 | -2.263 |
| 2018/3/2 12:00 | 6.41 | -2.469 | 6.76 | -2.351 | 6.73 | -2.191 |
| 2018/3/9 12:00 | 6.77 | -2.114 | 7.11 | -2.003 | 7.08 | -1.838 |
| 2018/3/16 12:00 | 6.90 | -1.979 | 7.25 | -1.864 | 7.21 | -1.708 |
| 2018/3/23 12:00 | 7.07 | -1.812 | 7.41 | -1.695 | 7.37 | -1.546 |
| 2018/3/30 12:00 | 6.90 | -1.984 | 7.24 | -1.875 | 7.20 | -1.717 |
| 2018/4/6 12:00 | 6.88 | -1.996 | 7.22 | -1.889 | 7.19 | -1.728 |
| 2018/4/13 12:00 | 6.84 | -2.038 | 7.18 | -1.930 | 7.15 | -1.770 |
| 2018/4/20 12:00 | 6.85 | -2.030 | 7.19 | -1.918 | 7.16 | -1.757 |
| 2018/4/27 12:00 | 6.94 | -1.935 | 7.29 | -1.821 | 7.26 | -1.661 |
| 2018/5/4 12:00 | 6.89 | -1.985 | 7.24 | -1.869 | 7.21 | -1.708 |
| 2018/5/11 12:00 | 6.98 | -1.900 | 7.33 | -1.785 | 7.29 | -1.626 |
| 2018/5/18 12:00 | 6.96 | -1.921 | 7.31 | -1.804 | 7.28 | -1.643 |
| 2018/5/25 12:00 | 6.84 | -2.038 | 7.19 | -1.925 | 7.16 | -1.761 |
| 2018/6/1 12:00 | 6.56 | -2.317 | 6.91 | -2.200 | 6.88 | -2.038 |
| 2018/6/8 12:00 | 6.61 | -2.270 | 6.96 | -2.151 | 6.93 | -1.989 |
| 2018/6/15 12:00 | 6.42 | -2.458 | 6.77 | -2.339 | 6.74 | -2.178 |
| 2018/6/22 12:00 | 6.41 | -2.467 | 6.76 | -2.346 | 6.73 | -2.187 |
| 2018/6/29 12:00 | 6.42 | -2.462 | 6.77 | -2.336 | 6.74 | -2.177 |
| 2018/7/6 12:00 | 6.41 | -2.465 | 6.77 | -2.338 | 6.71 | -2.211 |
| 2018/7/13 12:00 | 6.41 | -2.468 | 6.77 | -2.337 | 6.74 | -2.182 |
| 2018/7/20 12:00 | 6.40 | -2.479 | 6.76 | -2.349 | 6.73 | -2.194 |
| 2018/7/27 12:00 | 6.40 | -2.482 | 6.76 | -2.349 | 6.72 | -2.196 |

※7E_2は欠番

[沈下量]

| 事業区域名 計測地点名 | 7・12丁目(民地部) | |
|------------------|-------------|-------------|
| | 7F_1 | 7F_2 |
| 計測日 | 沈下量 (cm) | 沈下量 (cm) |
| 2017/11/25 12:00 | 0.0 | 0.0 |
| 2017/12/25 12:00 | 0.2 | 0.1 |
| 2018/1/5 12:00 | 0.2 | 0.1 |
| 2018/1/12 12:00 | 0.3 | 0.1 |
| 2018/1/19 12:00 | 0.3 | 0.1 |
| 2018/1/26 12:00 | 0.3 | 0.1 |
| 2018/2/2 12:00 | 0.4 | 0.2 |
| 2018/2/9 12:00 | 0.4 | 0.2 |
| 2018/2/16 12:00 | 0.4 | 0.2 |
| 2018/2/23 12:00 | 0.4 | 0.2 |
| 2018/3/2 12:00 | 0.4 | 0.2 |
| 2018/3/9 12:00 | 0.4 | 0.2 |
| 2018/3/16 12:00 | 0.4 | 0.2 |
| 2018/3/23 12:00 | 0.3 | 0.2 |
| 2018/3/30 12:00 | 0.4 | 0.2 |
| 2018/4/6 12:00 | 0.3 | 0.2 |
| 2018/4/13 12:00 | 0.4 | 0.2 |
| 2018/4/20 12:00 | 0.4 | 0.2 |
| 2018/4/27 12:00 | 0.4 | 0.2 |
| 2018/5/4 12:00 | 0.3 | 0.2 |
| 2018/5/11 12:00 | 0.3 | 0.2 |
| 2018/5/18 12:00 | 0.3 | 0.2 |
| 2018/5/25 12:00 | 0.3 | 0.2 |
| 2018/6/1 12:00 | 0.3 | 0.2 |
| 2018/6/8 12:00 | 0.3 | 0.2 |
| 2018/6/15 12:00 | 0.3 | 0.2 |
| 2018/6/22 12:00 | 0.3 | 0.2 |
| 2018/6/29 12:00 | 0.4 | 0.2 |
| 2018/7/6 12:00 | 0.4 | 0.3 |
| 2018/7/13 12:00 | 0.4 | 0.3 |
| 2018/7/20 12:00 | 0.4 | 0.3 |
| 2018/7/27 12:00 | 0.4 | 0.3 |

[沈下量]

| 事業区域名 計測地点名 | 7・12丁目(道路部) | | | |
|------------------|-------------|-------------|-------------|-------------|
| | 7E_1 | 7E_3 | 7E_4 | 7D_1(ポンプ部) |
| 計測日 | 沈下量 (cm) | 沈下量 (cm) | 沈下量 (cm) | 沈下量 (cm) |
| 2017/11/25 12:00 | 0.0 | 0.0 | 0.0 | 0.0 |
| 2017/12/25 12:00 | 0.1 | 0.2 | 0.2 | 0.1 |
| 2018/1/5 12:00 | 0.1 | 0.2 | 0.3 | 0.1 |
| 2018/1/12 12:00 | 0.1 | 0.3 | 0.3 | 0.2 |
| 2018/1/19 12:00 | 0.1 | 0.3 | 0.3 | 0.2 |
| 2018/1/26 12:00 | 0.1 | 0.3 | 0.3 | 0.2 |
| 2018/2/2 12:00 | 0.1 | 0.4 | 0.4 | 0.2 |
| 2018/2/9 12:00 | 0.2 | 0.4 | 0.4 | 0.2 |
| 2018/2/16 12:00 | 0.2 | 0.4 | 0.4 | 0.2 |
| 2018/2/23 12:00 | 0.2 | 0.4 | 0.4 | 0.2 |
| 2018/3/2 12:00 | 0.2 | 0.4 | 0.4 | 0.3 |
| 2018/3/9 12:00 | 0.2 | 0.4 | 0.4 | 0.3 |
| 2018/3/16 12:00 | 0.2 | 0.4 | 0.3 | 0.2 |
| 2018/3/23 12:00 | 0.2 | 0.4 | 0.3 | 0.2 |
| 2018/3/30 12:00 | 0.2 | 0.4 | 0.3 | 0.2 |
| 2018/4/6 12:00 | 0.2 | 0.3 | 0.3 | 0.2 |
| 2018/4/13 12:00 | 0.2 | 0.4 | 0.3 | 0.2 |
| 2018/4/20 12:00 | 0.2 | 0.4 | 0.3 | 0.2 |
| 2018/4/27 12:00 | 0.2 | 0.4 | 0.3 | 0.2 |
| 2018/5/4 12:00 | 0.2 | 0.3 | 0.3 | 0.2 |
| 2018/5/11 12:00 | 0.2 | 0.4 | 0.3 | 0.2 |
| 2018/5/18 12:00 | 0.2 | 0.3 | 0.2 | 0.2 |
| 2018/5/25 12:00 | 0.2 | 0.3 | 0.2 | 0.2 |
| 2018/6/1 12:00 | 0.2 | 0.3 | 0.3 | 0.3 |
| 2018/6/8 12:00 | 0.2 | 0.4 | 0.3 | 0.3 |
| 2018/6/15 12:00 | 0.2 | 0.4 | 0.3 | 0.3 |
| 2018/6/22 12:00 | 0.2 | 0.4 | 0.3 | 0.3 |
| 2018/6/29 12:00 | 0.3 | 0.4 | 0.4 | 0.3 |
| 2018/7/6 12:00 | 0.3 | 0.4 | 0.4 | 0.4 |
| 2018/7/13 12:00 | 0.3 | 0.4 | 0.4 | 0.4 |
| 2018/7/20 12:00 | 0.3 | 0.5 | 0.4 | 0.4 |
| 2018/7/27 12:00 | 0.4 | 0.5 | 0.4 | 0.4 |

※7E_2は欠番

[地下水位]

| | | |
|-----------------------|-----------------|---------------|
| 事業区域名 | 8丁目(民地部) | |
| 計測地点名 | 8F_1 | |
| 計測地点地盤高 (T.P.m) | 9.30 | |
| 計測日 | 地下水位 (T.P.m) | 地下水位 (GLm) |
| 2017/11/25 12:00 | 8.09 | -1.211 |
| 2017/12/25 12:00 | 7.71 | -1.589 |
| 2018/1/5 12:00 | 7.57 | -1.726 |
| 2018/1/12 12:00 | 7.52 | -1.782 |
| 2018/1/19 12:00 | 7.51 | -1.790 |
| 2018/1/26 12:00 | 7.56 | -1.740 |
| 2018/2/2 12:00 | 7.44 | -1.859 |
| 2018/2/9 12:00 | 7.53 | -1.765 |
| 2018/2/16 12:00 | 7.63 | -1.666 |
| 2018/2/23 12:00 | 7.61 | -1.694 |
| 2018/3/2 12:00 | 7.97 | -1.327 |
| 2018/3/9 12:00 | 9.25 | -0.049 |
| 2018/3/16 12:00 | 8.19 | -1.105 |
| 2018/3/23 12:00 | 8.69 | -0.613 |
| 2018/3/30 12:00 | 8.10 | -1.202 |
| 2018/4/6 12:00 | 8.08 | -1.221 |
| 2018/4/13 12:00 | 7.92 | -1.379 |
| 2018/4/20 12:00 | 7.89 | -1.408 |
| 2018/4/27 12:00 | 7.99 | -1.309 |
| 2018/5/4 12:00 | 7.98 | -1.317 |
| 2018/5/11 12:00 | 8.20 | -1.099 |
| 2018/5/18 12:00 | 8.25 | -1.049 |
| 2018/5/25 12:00 | 8.09 | -1.206 |
| 2018/6/1 12:00 | 7.98 | -1.319 |
| 2018/6/8 12:00 | 7.96 | -1.343 |
| 2018/6/15 12:00 | 7.90 | -1.400 |
| 2018/6/22 12:00 | 7.98 | -1.316 |
| 2018/6/29 12:00 | 7.92 | -1.382 |
| 2018/7/6 12:00 | 7.86 | -1.440 |
| 2018/7/13 12:00 | 7.84 | -1.459 |
| 2018/7/20 12:00 | 7.79 | -1.515 |
| 2018/7/27 12:00 | 7.74 | -1.562 |
| 1段階目水位 2018/2/24まで | 7.71 | -1.59 |
| 2段階目水位 2018/5/24まで | 7.70 | -1.60 |
| 最終水位 2018/8/24まで | 7.69 | -1.61 |

[地下水位]

| | | |
|--------------------|-----------------|---------------|
| 事業区域名 | 8丁目(道路部) | |
| 計測地点名 | 8E_1 | |
| 計測地点地盤高 (T.P.m) | 8.94 | |
| 計測日 | 地下水位 (T.P.m) | 地下水位 (GLm) |
| 2017/11/25 12:00 | 7.71 | -1.227 |
| 2017/12/25 12:00 | 7.30 | -1.640 |
| 2018/1/5 12:00 | 7.29 | -1.651 |
| 2018/1/12 12:00 | 7.27 | -1.666 |
| 2018/1/19 12:00 | 7.28 | -1.662 |
| 2018/1/26 12:00 | 7.36 | -1.577 |
| 2018/2/2 12:00 | 7.37 | -1.566 |
| 2018/2/9 12:00 | 7.41 | -1.535 |
| 2018/2/16 12:00 | 7.43 | -1.512 |
| 2018/2/23 12:00 | 7.45 | -1.493 |
| 2018/3/2 12:00 | 7.61 | -1.332 |
| 2018/3/9 12:00 | 7.93 | -1.008 |
| 2018/3/16 12:00 | 7.92 | -1.024 |
| 2018/3/23 12:00 | 7.92 | -1.021 |
| 2018/3/30 12:00 | 7.89 | -1.047 |
| 2018/4/6 12:00 | 7.83 | -1.110 |
| 2018/4/13 12:00 | 7.72 | -1.215 |
| 2018/4/20 12:00 | 7.74 | -1.202 |
| 2018/4/27 12:00 | 7.86 | -1.083 |
| 2018/5/4 12:00 | 7.80 | -1.142 |
| 2018/5/11 12:00 | 7.93 | -1.014 |
| 2018/5/18 12:00 | 7.92 | -1.024 |
| 2018/5/25 12:00 | 7.77 | -1.171 |
| 2018/6/1 12:00 | 7.63 | -1.311 |
| 2018/6/8 12:00 | 7.63 | -1.313 |
| 2018/6/15 12:00 | 7.47 | -1.474 |
| 2018/6/22 12:00 | 7.42 | -1.521 |
| 2018/6/29 12:00 | 7.50 | -1.444 |
| 2018/7/6 12:00 | 7.41 | -1.526 |
| 2018/7/13 12:00 | 7.47 | -1.468 |
| 2018/7/20 12:00 | 7.50 | -1.436 |
| 2018/7/27 12:00 | 7.47 | -1.468 |

[沈下量]

| 事業区域名 | 8丁目(民地部) |
|------------------|-------------|
| 計測地点名 | 8F_1 |
| 計測日 | 沈下量 (cm) |
| 2017/11/25 12:00 | 0.0 |
| 2017/12/25 12:00 | 0.2 |
| 2018/1/5 12:00 | 0.2 |
| 2018/1/12 12:00 | 0.2 |
| 2018/1/19 12:00 | 0.3 |
| 2018/1/26 12:00 | 0.3 |
| 2018/2/2 12:00 | 0.4 |
| 2018/2/9 12:00 | 0.4 |
| 2018/2/16 12:00 | 0.3 |
| 2018/2/23 12:00 | 0.4 |
| 2018/3/2 12:00 | 0.3 |
| 2018/3/9 12:00 | 0.3 |
| 2018/3/16 12:00 | 0.3 |
| 2018/3/23 12:00 | 0.2 |
| 2018/3/30 12:00 | 0.2 |
| 2018/4/6 12:00 | 0.2 |
| 2018/4/13 12:00 | 0.2 |
| 2018/4/20 12:00 | 0.3 |
| 2018/4/27 12:00 | 0.3 |
| 2018/5/4 12:00 | 0.2 |
| 2018/5/11 12:00 | 0.2 |
| 2018/5/18 12:00 | 0.2 |
| 2018/5/25 12:00 | 0.2 |
| 2018/6/1 12:00 | 0.2 |
| 2018/6/8 12:00 | 0.2 |
| 2018/6/15 12:00 | 0.2 |
| 2018/6/22 12:00 | 0.2 |
| 2018/6/29 12:00 | 0.2 |
| 2018/7/6 12:00 | 0.3 |
| 2018/7/13 12:00 | 0.3 |
| 2018/7/20 12:00 | 0.3 |
| 2018/7/27 12:00 | 0.3 |

[沈下量]

| 事業区域名 計測地点名 | 8丁目(道路部) | |
|------------------|-------------|-------------|
| | 8E_1 | 8D_1(ポンプ部) |
| 計測日 | 沈下量 (cm) | 沈下量 (cm) |
| 2017/11/25 12:00 | 0.0 | 0.0 |
| 2017/12/25 12:00 | 0.3 | 0.1 |
| 2018/1/5 12:00 | 0.3 | 0.1 |
| 2018/1/12 12:00 | 0.3 | 0.1 |
| 2018/1/19 12:00 | 0.4 | 0.1 |
| 2018/1/26 12:00 | 0.4 | 0.1 |
| 2018/2/2 12:00 | 0.4 | 0.2 |
| 2018/2/9 12:00 | 0.4 | 0.2 |
| 2018/2/16 12:00 | 0.4 | 0.2 |
| 2018/2/23 12:00 | 0.4 | 0.2 |
| 2018/3/2 12:00 | 0.4 | 0.2 |
| 2018/3/9 12:00 | 0.4 | 0.2 |
| 2018/3/16 12:00 | 0.4 | 0.1 |
| 2018/3/23 12:00 | 0.3 | 0.1 |
| 2018/3/30 12:00 | 0.3 | 0.1 |
| 2018/4/6 12:00 | 0.3 | 0.1 |
| 2018/4/13 12:00 | 0.3 | 0.1 |
| 2018/4/20 12:00 | 0.4 | 0.1 |
| 2018/4/27 12:00 | 0.4 | 0.1 |
| 2018/5/4 12:00 | 0.4 | 0.1 |
| 2018/5/11 12:00 | 0.4 | 0.1 |
| 2018/5/18 12:00 | 0.3 | 0.1 |
| 2018/5/25 12:00 | 0.3 | 0.1 |
| 2018/6/1 12:00 | 0.4 | 0.1 |
| 2018/6/8 12:00 | 0.4 | 0.1 |
| 2018/6/15 12:00 | 0.4 | 0.1 |
| 2018/6/22 12:00 | 0.4 | 0.1 |
| 2018/6/29 12:00 | 0.4 | 0.2 |
| 2018/7/6 12:00 | 0.4 | 0.2 |
| 2018/7/13 12:00 | 0.5 | 0.2 |
| 2018/7/20 12:00 | 0.5 | 0.2 |
| 2018/7/27 12:00 | 0.5 | 0.2 |

[地下水位]

| 事業区域名 計測地点名 | 10丁目(民地部) | | | |
|-----------------------|-----------------|---------------|-----------------|---------------|
| | 10F_1 | | 10F_2 | |
| 計測地点地盤高 (T.P.m) | 8.96 | | 9.15 | |
| 計測日 | 地下水位 (T.P.m) | 地下水位 (GLm) | 地下水位 (T.P.m) | 地下水位 (GLm) |
| 2017/11/25 12:00 | 7.13 | -1.827 | 7.30 | -1.848 |
| 2017/12/25 12:00 | 6.69 | -2.274 | 7.01 | -2.138 |
| 2018/1/5 12:00 | 6.69 | -2.274 | 6.92 | -2.232 |
| 2018/1/12 12:00 | 6.67 | -2.286 | 6.89 | -2.261 |
| 2018/1/19 12:00 | 6.66 | -2.298 | 6.89 | -2.262 |
| 2018/1/26 12:00 | 6.69 | -2.274 | 6.90 | -2.245 |
| 2018/2/2 12:00 | 6.70 | -2.258 | 6.84 | -2.308 |
| 2018/2/9 12:00 | 6.72 | -2.235 | 6.87 | -2.281 |
| 2018/2/16 12:00 | 6.72 | -2.239 | 6.89 | -2.264 |
| 2018/2/23 12:00 | 6.70 | -2.256 | 6.85 | -2.303 |
| 2018/3/2 12:00 | 6.72 | -2.240 | 6.93 | -2.222 |
| 2018/3/9 12:00 | 6.82 | -2.143 | 6.93 | -2.218 |
| 2018/3/16 12:00 | 7.04 | -1.919 | 7.07 | -2.083 |
| 2018/3/23 12:00 | 7.09 | -1.866 | 7.15 | -2.002 |
| 2018/3/30 12:00 | 7.05 | -1.910 | 7.12 | -2.025 |
| 2018/4/6 12:00 | 7.02 | -1.936 | 7.13 | -2.017 |
| 2018/4/13 12:00 | 6.98 | -1.981 | 7.10 | -2.050 |
| 2018/4/20 12:00 | 6.98 | -1.979 | 7.08 | -2.068 |
| 2018/4/27 12:00 | 7.06 | -1.901 | 7.13 | -2.017 |
| 2018/5/4 12:00 | 7.08 | -1.880 | 7.18 | -1.965 |
| 2018/5/11 12:00 | 7.17 | -1.789 | 7.16 | -1.991 |
| 2018/5/18 12:00 | 7.24 | -1.721 | 7.27 | -1.876 |
| 2018/5/25 12:00 | 7.16 | -1.801 | 7.27 | -1.880 |
| 2018/6/1 12:00 | 7.07 | -1.887 | 7.25 | -1.899 |
| 2018/6/8 12:00 | 7.04 | -1.924 | 7.22 | -1.931 |
| 2018/6/15 12:00 | 6.94 | -2.023 | 7.20 | -1.950 |
| 2018/6/22 12:00 | 6.70 | -2.263 | 7.19 | -1.963 |
| 2018/6/29 12:00 | 6.62 | -2.339 | 7.13 | -2.020 |
| 2018/7/6 12:00 | 6.59 | -2.371 | 7.08 | -2.065 |
| 2018/7/13 12:00 | 6.58 | -2.380 | 7.06 | -2.095 |
| 2018/7/20 12:00 | 6.57 | -2.393 | 7.01 | -2.136 |
| 2018/7/27 12:00 | 6.56 | -2.401 | 6.97 | -2.176 |
| 1段階目水位 2018/2/24まで | 6.94 | -2.02 | 6.94 | -2.21 |
| 2段階目水位 2018/5/24まで | 6.75 | -2.21 | 6.75 | -2.40 |
| 最終水位 2018/8/24まで | 6.56 | -2.40 | 6.56 | -2.59 |

[地下水位]

| 事業区域名 計測地点名 | 10丁目(道路部) | | | | | | | |
|--------------------|-----------------|---------------|-----------------|---------------|-----------------|---------------|-----------------|---------------|
| | 10E_1 | | 10E_2 | | 10E_3 | | 10E_4 | |
| 計測地点地盤高 (T.P.m) | 8.67 | | 8.96 | | 8.49 | | 8.58 | |
| 計測日 | 地下水位 (T.P.m) | 地下水位 (GLm) | 地下水位 (T.P.m) | 地下水位 (GLm) | 地下水位 (T.P.m) | 地下水位 (GLm) | 地下水位 (T.P.m) | 地下水位 (GLm) |
| 2017/11/25 12:00 | 7.18 | -1.487 | 7.14 | -1.822 | 7.21 | -1.280 | 7.25 | -1.327 |
| 2017/12/25 12:00 | 6.76 | -1.909 | 6.72 | -2.245 | 6.79 | -1.698 | 6.84 | -1.740 |
| 2018/1/5 12:00 | 6.75 | -1.922 | 6.71 | -2.253 | 6.78 | -1.706 | 6.83 | -1.752 |
| 2018/1/12 12:00 | 6.74 | -1.932 | 6.70 | -2.261 | 6.77 | -1.716 | 6.82 | -1.760 |
| 2018/1/19 12:00 | 6.73 | -1.939 | 6.70 | -2.263 | 6.76 | -1.726 | 6.81 | -1.771 |
| 2018/1/26 12:00 | 6.78 | -1.895 | 6.74 | -2.221 | 6.81 | -1.680 | 6.86 | -1.724 |
| 2018/2/2 12:00 | 6.78 | -1.888 | 6.75 | -2.210 | 6.82 | -1.674 | 6.86 | -1.715 |
| 2018/2/9 12:00 | 6.79 | -1.877 | 6.76 | -2.197 | 6.83 | -1.662 | 6.88 | -1.703 |
| 2018/2/16 12:00 | 6.78 | -1.886 | 6.75 | -2.207 | 6.82 | -1.673 | 6.87 | -1.713 |
| 2018/2/23 12:00 | 6.77 | -1.904 | 6.74 | -2.224 | 6.80 | -1.690 | 6.85 | -1.731 |
| 2018/3/2 12:00 | 6.84 | -1.830 | 6.80 | -2.159 | 6.87 | -1.624 | 6.92 | -1.660 |
| 2018/3/9 12:00 | 7.09 | -1.582 | 7.06 | -1.905 | 7.11 | -1.375 | 7.17 | -1.409 |
| 2018/3/16 12:00 | 7.09 | -1.583 | 7.05 | -1.909 | 7.12 | -1.368 | 7.17 | -1.408 |
| 2018/3/23 12:00 | 7.21 | -1.459 | 7.18 | -1.782 | 7.25 | -1.241 | 7.30 | -1.283 |
| 2018/3/30 12:00 | 7.03 | -1.637 | 6.99 | -1.966 | 7.07 | -1.424 | 7.11 | -1.465 |
| 2018/4/6 12:00 | 7.06 | -1.614 | 7.01 | -1.947 | 7.09 | -1.403 | 7.13 | -1.446 |
| 2018/4/13 12:00 | 7.01 | -1.656 | 6.96 | -1.996 | 7.04 | -1.448 | 7.09 | -1.491 |
| 2018/4/20 12:00 | 7.03 | -1.638 | 6.98 | -1.979 | 7.06 | -1.429 | 7.11 | -1.470 |
| 2018/4/27 12:00 | 7.14 | -1.526 | 7.09 | -1.869 | 7.17 | -1.317 | 7.22 | -1.361 |
| 2018/5/4 12:00 | 7.13 | -1.541 | 7.07 | -1.886 | 7.16 | -1.334 | 7.20 | -1.376 |
| 2018/5/11 12:00 | 7.23 | -1.435 | 7.18 | -1.781 | 7.27 | -1.224 | 7.31 | -1.269 |
| 2018/5/18 12:00 | 7.26 | -1.409 | 7.20 | -1.758 | 7.29 | -1.199 | 7.34 | -1.245 |
| 2018/5/25 12:00 | 7.19 | -1.479 | 7.13 | -1.833 | 7.22 | -1.273 | 7.26 | -1.318 |
| 2018/6/1 12:00 | 7.06 | -1.606 | 7.00 | -1.963 | 7.09 | -1.397 | 7.14 | -1.444 |
| 2018/6/8 12:00 | 6.98 | -1.688 | 6.91 | -2.050 | 7.01 | -1.481 | 7.05 | -1.530 |
| 2018/6/15 12:00 | 6.67 | -1.995 | 6.61 | -2.351 | 6.69 | -1.799 | 6.72 | -1.862 |
| 2018/6/22 12:00 | 6.60 | -2.070 | 6.54 | -2.423 | 6.63 | -1.862 | 6.66 | -1.921 |
| 2018/6/29 12:00 | 6.59 | -2.081 | 6.52 | -2.438 | 6.62 | -1.873 | 6.65 | -1.931 |
| 2018/7/6 12:00 | 6.61 | -2.065 | 6.54 | -2.416 | 6.63 | -1.865 | 6.65 | -1.926 |
| 2018/7/13 12:00 | 6.59 | -2.085 | 6.53 | -2.432 | 6.61 | -1.880 | 6.64 | -1.943 |
| 2018/7/20 12:00 | 6.59 | -2.082 | 6.53 | -2.430 | 6.61 | -1.880 | 6.64 | -1.939 |
| 2018/7/27 12:00 | 6.57 | -2.105 | 6.51 | -2.449 | 6.60 | -1.888 | 6.63 | -1.952 |

[沈下量]

| 事業区域名 計測地点名 | 10丁目(民地部) | |
|------------------|-------------|-------------|
| | 10F_1 | 10F_2 |
| 計測日 | 沈下量 (cm) | 沈下量 (cm) |
| 2017/11/25 12:00 | 0.0 | 0.0 |
| 2017/12/25 12:00 | 0.0 | 0.1 |
| 2018/1/5 12:00 | 0.1 | 0.1 |
| 2018/1/12 12:00 | 0.1 | 0.1 |
| 2018/1/19 12:00 | 0.1 | 0.2 |
| 2018/1/26 12:00 | 0.1 | 0.2 |
| 2018/2/2 12:00 | 0.2 | 0.2 |
| 2018/2/9 12:00 | 0.2 | 0.2 |
| 2018/2/16 12:00 | 0.2 | 0.3 |
| 2018/2/23 12:00 | 0.2 | 0.3 |
| 2018/3/2 12:00 | 0.2 | 0.3 |
| 2018/3/9 12:00 | 0.2 | 0.4 |
| 2018/3/16 12:00 | 0.3 | 0.4 |
| 2018/3/23 12:00 | 0.3 | 0.4 |
| 2018/3/30 12:00 | 0.3 | 0.4 |
| 2018/4/6 12:00 | 0.3 | 0.4 |
| 2018/4/13 12:00 | 0.3 | 0.4 |
| 2018/4/20 12:00 | 0.3 | 0.4 |
| 2018/4/27 12:00 | 0.3 | 0.4 |
| 2018/5/4 12:00 | 0.3 | 0.4 |
| 2018/5/11 12:00 | 0.3 | 0.5 |
| 2018/5/18 12:00 | 0.3 | 0.5 |
| 2018/5/25 12:00 | 0.3 | 0.5 |
| 2018/6/1 12:00 | 0.3 | 0.5 |
| 2018/6/8 12:00 | 0.4 | 0.5 |
| 2018/6/15 12:00 | 0.4 | 0.5 |
| 2018/6/22 12:00 | 0.4 | 0.6 |
| 2018/6/29 12:00 | 0.4 | 0.6 |
| 2018/7/6 12:00 | 0.5 | 0.6 |
| 2018/7/13 12:00 | 0.5 | 0.6 |
| 2018/7/20 12:00 | 0.5 | 0.7 |
| 2018/7/27 12:00 | 0.5 | 0.7 |

[沈下量]

| 事業区域名 計測地点名 | 10丁目(道路部) | | | | |
|------------------|-------------|-------------|-------------|-------------|-------------|
| | 10E_1 | 10E_2 | 10E_3 | 10E_4 | 10D_1(ポンプ部) |
| 計測日 | 沈下量 (cm) | 沈下量 (cm) | 沈下量 (cm) | 沈下量 (cm) | 沈下量 (cm) |
| 2017/11/25 12:00 | 0.0 | 0.0 | 0.0 | 0.0 | 0.0 |
| 2017/12/25 12:00 | 0.1 | 0.1 | 0.1 | 0.1 | 0.1 |
| 2018/1/5 12:00 | 0.1 | 0.1 | 0.2 | 0.2 | 0.2 |
| 2018/1/12 12:00 | 0.1 | 0.1 | 0.2 | 0.2 | 0.2 |
| 2018/1/19 12:00 | 0.1 | 0.1 | 0.3 | 0.2 | 0.2 |
| 2018/1/26 12:00 | 0.1 | 0.2 | 0.3 | 0.2 | 0.2 |
| 2018/2/2 12:00 | 0.1 | 0.2 | 0.3 | 0.3 | 0.2 |
| 2018/2/9 12:00 | 0.2 | 0.2 | 0.3 | 0.3 | 0.3 |
| 2018/2/16 12:00 | 0.2 | 0.2 | 0.3 | 0.3 | 0.3 |
| 2018/2/23 12:00 | 0.2 | 0.3 | 0.4 | 0.3 | 0.3 |
| 2018/3/2 12:00 | 0.2 | 0.3 | 0.4 | 0.3 | 0.3 |
| 2018/3/9 12:00 | 0.2 | 0.3 | 0.4 | 0.3 | 0.3 |
| 2018/3/16 12:00 | 0.2 | 0.3 | 0.4 | 0.3 | 0.3 |
| 2018/3/23 12:00 | 0.2 | 0.4 | 0.4 | 0.3 | 0.3 |
| 2018/3/30 12:00 | 0.2 | 0.5 | 0.4 | 0.4 | 0.3 |
| 2018/4/6 12:00 | 0.2 | 0.5 | 0.4 | 0.3 | 0.3 |
| 2018/4/13 12:00 | 0.2 | 0.5 | 0.4 | 0.4 | 0.4 |
| 2018/4/20 12:00 | 0.2 | 0.6 | 0.4 | 0.4 | 0.4 |
| 2018/4/27 12:00 | 0.2 | 0.6 | 0.4 | 0.4 | 0.4 |
| 2018/5/4 12:00 | 0.2 | 0.6 | 0.4 | 0.4 | 0.4 |
| 2018/5/11 12:00 | 0.3 | 0.6 | 0.4 | 0.4 | 0.5 |
| 2018/5/18 12:00 | 0.3 | 0.6 | 0.4 | 0.4 | 0.4 |
| 2018/5/25 12:00 | 0.3 | 0.6 | 0.4 | 0.4 | 0.5 |
| 2018/6/1 12:00 | 0.3 | 0.6 | 0.5 | 0.5 | 0.5 |
| 2018/6/8 12:00 | 0.3 | 0.6 | 0.5 | 0.5 | 0.5 |
| 2018/6/15 12:00 | 0.3 | 0.7 | 0.5 | 0.5 | 0.5 |
| 2018/6/22 12:00 | 0.3 | 0.7 | 0.5 | 0.5 | 0.5 |
| 2018/6/29 12:00 | 0.4 | 0.7 | 0.6 | 0.6 | 0.6 |
| 2018/7/6 12:00 | 0.4 | 0.7 | 0.6 | 0.6 | 0.6 |
| 2018/7/13 12:00 | 0.4 | 0.8 | 0.6 | 0.7 | 0.6 |
| 2018/7/20 12:00 | 0.4 | 0.8 | 0.7 | 0.7 | 0.6 |
| 2018/7/27 12:00 | 0.5 | 0.8 | 0.7 | 0.7 | 0.7 |

[地下水位]

| 事業区域名 | 11丁目(民地部) | | | |
|-----------------------|-----------------|---------------|-----------------|---------------|
| 計測地点名 | 11F_1 | | 11F_2 | |
| 計測地点地盤高 (T.P.m) | 8.36 | | 9.22 | |
| 計測日 | 地下水位 (T.P.m) | 地下水位 (GLm) | 地下水位 (T.P.m) | 地下水位 (GLm) |
| 2017/11/25 12:00 | 7.41 | -0.955 | 7.32 | -1.896 |
| 2017/12/25 12:00 | 6.86 | -1.499 | 6.64 | -2.582 |
| 2018/1/5 12:00 | 6.79 | -1.574 | 6.68 | -2.544 |
| 2018/1/12 12:00 | 6.75 | -1.607 | 6.68 | -2.538 |
| 2018/1/19 12:00 | 6.79 | -1.574 | 6.70 | -2.522 |
| 2018/1/26 12:00 | 6.85 | -1.510 | 6.76 | -2.456 |
| 2018/2/2 12:00 | 6.85 | -1.507 | 6.79 | -2.428 |
| 2018/2/9 12:00 | 6.89 | -1.475 | 6.83 | -2.393 |
| 2018/2/16 12:00 | 6.93 | -1.432 | 6.85 | -2.371 |
| 2018/2/23 12:00 | 6.94 | -1.421 | 6.86 | -2.360 |
| 2018/3/2 12:00 | 7.02 | -1.339 | 6.94 | -2.283 |
| 2018/3/9 12:00 | 7.44 | -0.919 | 7.36 | -1.864 |
| 2018/3/16 12:00 | 7.41 | -0.948 | 7.34 | -1.879 |
| 2018/3/23 12:00 | 7.57 | -0.786 | 7.54 | -1.683 |
| 2018/3/30 12:00 | 7.28 | -1.082 | 7.20 | -2.022 |
| 2018/4/6 12:00 | 7.37 | -0.987 | 7.27 | -1.952 |
| 2018/4/13 12:00 | 7.26 | -1.096 | 7.18 | -2.042 |
| 2018/4/20 12:00 | 7.22 | -1.137 | 7.12 | -2.097 |
| 2018/4/27 12:00 | 7.23 | -1.131 | 7.09 | -2.132 |
| 2018/5/4 12:00 | 7.20 | -1.160 | 7.06 | -2.155 |
| 2018/5/11 12:00 | 7.19 | -1.170 | 7.05 | -2.168 |
| 2018/5/18 12:00 | 7.17 | -1.185 | 7.03 | -2.187 |
| 2018/5/25 12:00 | 7.28 | -1.080 | 7.15 | -2.066 |
| 2018/6/1 12:00 | 7.07 | -1.291 | 6.90 | -2.322 |
| 2018/6/8 12:00 | 7.08 | -1.277 | 6.91 | -2.313 |
| 2018/6/15 12:00 | 6.89 | -1.469 | 6.60 | -2.617 |
| 2018/6/22 12:00 | 6.84 | -1.524 | 6.54 | -2.684 |
| 2018/6/29 12:00 | 6.76 | -1.597 | 6.52 | -2.703 |
| 2018/7/6 12:00 | 6.74 | -1.620 | 6.52 | -2.696 |
| 2018/7/13 12:00 | 6.77 | -1.586 | 6.52 | -2.697 |
| 2018/7/20 12:00 | 6.74 | -1.624 | 6.52 | -2.703 |
| 2018/7/27 12:00 | 6.73 | -1.628 | 6.50 | -2.717 |
| 1段階目水位 2018/2/24まで | 6.96 | -1.40 | 6.96 | -2.26 |
| 2段階目水位 2018/5/24まで | 6.80 | -1.57 | 6.80 | -2.43 |
| 最終水位 2018/8/24まで | 6.63 | -1.73 | 6.63 | -2.59 |

[地下水位]

| 事業区域名 計測地点名 | 11丁目(道路部) | | | | | | | |
|--------------------|-----------------|---------------|-----------------|---------------|-----------------|---------------|-----------------|---------------|
| | 11E_1 | | 11E_2 | | 11E_3 | | 11E_4 | |
| 計測地点地盤高 (T.P.m) | 8.42 | | 8.44 | | 8.73 | | 8.71 | |
| 計測日 | 地下水位 (T.P.m) | 地下水位 (GLm) | 地下水位 (T.P.m) | 地下水位 (GLm) | 地下水位 (T.P.m) | 地下水位 (GLm) | 地下水位 (T.P.m) | 地下水位 (GLm) |
| 2017/11/25 12:00 | 7.40 | -1.017 | 7.39 | -1.054 | 7.46 | -1.273 | 7.36 | -1.346 |
| 2017/12/25 12:00 | 6.71 | -1.711 | 6.71 | -1.733 | 6.76 | -1.967 | 6.67 | -2.036 |
| 2018/1/5 12:00 | 6.75 | -1.670 | 6.75 | -1.691 | 6.80 | -1.925 | 6.71 | -1.995 |
| 2018/1/12 12:00 | 6.76 | -1.656 | 6.77 | -1.674 | 6.82 | -1.911 | 6.73 | -1.981 |
| 2018/1/19 12:00 | 6.78 | -1.636 | 6.79 | -1.655 | 6.84 | -1.892 | 6.75 | -1.964 |
| 2018/1/26 12:00 | 6.85 | -1.573 | 6.85 | -1.589 | 6.90 | -1.830 | 6.81 | -1.903 |
| 2018/2/2 12:00 | 6.88 | -1.535 | 6.89 | -1.551 | 6.94 | -1.793 | 6.84 | -1.868 |
| 2018/2/9 12:00 | 6.92 | -1.499 | 6.93 | -1.514 | 6.98 | -1.754 | 6.88 | -1.830 |
| 2018/2/16 12:00 | 6.94 | -1.480 | 6.94 | -1.498 | 6.99 | -1.738 | 6.90 | -1.812 |
| 2018/2/23 12:00 | 6.95 | -1.474 | 6.95 | -1.490 | 7.00 | -1.730 | 6.91 | -1.803 |
| 2018/3/2 12:00 | 7.04 | -1.383 | 7.05 | -1.392 | 7.09 | -1.641 | 7.00 | -1.712 |
| 2018/3/9 12:00 | 7.38 | -1.042 | 7.38 | -1.056 | 7.43 | -1.301 | 7.33 | -1.378 |
| 2018/3/16 12:00 | 7.42 | -1.005 | 7.42 | -1.022 | 7.47 | -1.260 | 7.38 | -1.327 |
| 2018/3/23 12:00 | 7.59 | -0.831 | 7.59 | -0.846 | 7.65 | -1.084 | 7.56 | -1.151 |
| 2018/3/30 12:00 | 7.27 | -1.150 | 7.27 | -1.171 | 7.32 | -1.409 | 7.24 | -1.473 |
| 2018/4/6 12:00 | 7.33 | -1.090 | 7.32 | -1.115 | 7.38 | -1.350 | 7.30 | -1.412 |
| 2018/4/13 12:00 | 7.24 | -1.179 | 7.23 | -1.206 | 7.29 | -1.439 | 7.21 | -1.500 |
| 2018/4/20 12:00 | 7.19 | -1.229 | 7.19 | -1.251 | 7.24 | -1.488 | 7.16 | -1.547 |
| 2018/4/27 12:00 | 7.15 | -1.268 | 7.15 | -1.293 | 7.20 | -1.534 | 7.13 | -1.584 |
| 2018/5/4 12:00 | 7.13 | -1.293 | 7.12 | -1.317 | 7.17 | -1.561 | 7.10 | -1.607 |
| 2018/5/11 12:00 | 7.11 | -1.314 | 7.11 | -1.333 | 7.15 | -1.583 | 7.09 | -1.624 |
| 2018/5/18 12:00 | 7.07 | -1.352 | 7.07 | -1.370 | 7.11 | -1.621 | 7.05 | -1.662 |
| 2018/5/25 12:00 | 7.20 | -1.216 | 7.20 | -1.235 | 7.24 | -1.491 | 7.19 | -1.525 |
| 2018/6/1 12:00 | 6.93 | -1.485 | 6.94 | -1.500 | 6.97 | -1.761 | 6.92 | -1.791 |
| 2018/6/8 12:00 | 6.93 | -1.490 | 6.94 | -1.503 | 6.96 | -1.768 | 6.92 | -1.792 |
| 2018/6/15 12:00 | 6.55 | -1.867 | 6.56 | -1.875 | 6.59 | -2.145 | 6.54 | -2.171 |
| 2018/6/22 12:00 | 6.52 | -1.896 | 6.54 | -1.903 | 6.56 | -2.175 | 6.51 | -2.200 |
| 2018/6/29 12:00 | 6.54 | -1.878 | 6.55 | -1.888 | 6.57 | -2.162 | 6.53 | -2.182 |
| 2018/7/6 12:00 | 6.48 | -1.944 | 6.51 | -1.929 | 6.53 | -2.201 | 6.50 | -2.210 |
| 2018/7/13 12:00 | 6.47 | -1.949 | 6.50 | -1.936 | 6.52 | -2.212 | 6.49 | -2.221 |
| 2018/7/20 12:00 | 6.53 | -1.891 | 6.54 | -1.898 | 6.54 | -2.189 | 6.53 | -2.184 |
| 2018/7/27 12:00 | 6.51 | -1.915 | 6.52 | -1.923 | 6.51 | -2.221 | 6.50 | -2.206 |

[沈下量]

| 事業区域名 計測地点名 | 11丁目(民地部) | |
|------------------|-------------|-------------|
| | 11F_1 | 11F_2 |
| 計測日 | 沈下量 (cm) | 沈下量 (cm) |
| 2017/11/25 12:00 | 0.0 | 0.0 |
| 2017/12/25 12:00 | 0.2 | 0.2 |
| 2018/1/5 12:00 | 0.3 | 0.3 |
| 2018/1/12 12:00 | 0.3 | 0.3 |
| 2018/1/19 12:00 | 0.3 | 0.3 |
| 2018/1/26 12:00 | 0.3 | 0.3 |
| 2018/2/2 12:00 | 0.4 | 0.3 |
| 2018/2/9 12:00 | 0.4 | 0.3 |
| 2018/2/16 12:00 | 0.4 | 0.3 |
| 2018/2/23 12:00 | 0.4 | 0.4 |
| 2018/3/2 12:00 | 0.4 | 0.3 |
| 2018/3/9 12:00 | 0.4 | 0.3 |
| 2018/3/16 12:00 | 0.4 | 0.3 |
| 2018/3/23 12:00 | 0.4 | 0.3 |
| 2018/3/30 12:00 | 0.4 | 0.3 |
| 2018/4/6 12:00 | 0.4 | 0.3 |
| 2018/4/13 12:00 | 0.4 | 0.3 |
| 2018/4/20 12:00 | 0.4 | 0.3 |
| 2018/4/27 12:00 | 0.4 | 0.3 |
| 2018/5/4 12:00 | 0.4 | 0.3 |
| 2018/5/11 12:00 | 0.4 | 0.4 |
| 2018/5/18 12:00 | 0.4 | 0.4 |
| 2018/5/25 12:00 | 0.4 | 0.4 |
| 2018/6/1 12:00 | 0.5 | 0.4 |
| 2018/6/8 12:00 | 0.5 | 0.4 |
| 2018/6/15 12:00 | 0.5 | 0.5 |
| 2018/6/22 12:00 | 0.5 | 0.5 |
| 2018/6/29 12:00 | 0.6 | 0.5 |
| 2018/7/6 12:00 | 0.6 | 0.6 |
| 2018/7/13 12:00 | 0.6 | 0.6 |
| 2018/7/20 12:00 | 0.7 | 0.6 |
| 2018/7/27 12:00 | 0.7 | 0.7 |

[沈下量]

| 事業区域名 計測地点名 | 11丁目(道路部) | | | | |
|------------------|-------------|-------------|-------------|-------------|-------------|
| | 11E_1 | 11E_2 | 11E_3 | 11E_4 | 11D_1(ポンプ部) |
| 計測日 | 沈下量 (cm) | 沈下量 (cm) | 沈下量 (cm) | 沈下量 (cm) | 沈下量 (cm) |
| 2017/11/25 12:00 | 0.0 | 0.0 | 0.0 | 0.0 | 0.0 |
| 2017/12/25 12:00 | 0.1 | 0.1 | 0.1 | 0.1 | 0.0 |
| 2018/1/5 12:00 | 0.2 | 0.1 | 0.1 | 0.1 | 0.1 |
| 2018/1/12 12:00 | 0.2 | 0.2 | 0.1 | 0.2 | 0.1 |
| 2018/1/19 12:00 | 0.2 | 0.2 | 0.2 | 0.2 | 0.1 |
| 2018/1/26 12:00 | 0.2 | 0.2 | 0.2 | 0.2 | 0.1 |
| 2018/2/2 12:00 | 0.2 | 0.3 | 0.2 | 0.2 | 0.1 |
| 2018/2/9 12:00 | 0.3 | 0.3 | 0.2 | 0.3 | 0.2 |
| 2018/2/16 12:00 | 0.3 | 0.3 | 0.2 | 0.3 | 0.2 |
| 2018/2/23 12:00 | 0.3 | 0.3 | 0.2 | 0.3 | 0.2 |
| 2018/3/2 12:00 | 0.3 | 0.3 | 0.2 | 0.3 | 0.2 |
| 2018/3/9 12:00 | 0.3 | 0.4 | 0.2 | 0.3 | 0.2 |
| 2018/3/16 12:00 | 0.3 | 0.3 | 0.2 | 0.3 | 0.2 |
| 2018/3/23 12:00 | 0.3 | 0.3 | 0.2 | 0.3 | 0.2 |
| 2018/3/30 12:00 | 0.3 | 0.3 | 0.2 | 0.3 | 0.3 |
| 2018/4/6 12:00 | 0.3 | 0.3 | 0.2 | 0.3 | 0.2 |
| 2018/4/13 12:00 | 0.3 | 0.3 | 0.2 | 0.3 | 0.3 |
| 2018/4/20 12:00 | 0.3 | 0.3 | 0.2 | 0.3 | 0.3 |
| 2018/4/27 12:00 | 0.3 | 0.3 | 0.2 | 0.3 | 0.3 |
| 2018/5/4 12:00 | 0.3 | 0.3 | 0.2 | 0.3 | 0.3 |
| 2018/5/11 12:00 | 0.3 | 0.4 | 0.2 | 0.3 | 0.3 |
| 2018/5/18 12:00 | 0.3 | 0.4 | 0.2 | 0.3 | 0.3 |
| 2018/5/25 12:00 | 0.3 | 0.4 | 0.2 | 0.4 | 0.3 |
| 2018/6/1 12:00 | 0.3 | 0.4 | 0.3 | 0.4 | 0.3 |
| 2018/6/8 12:00 | 0.3 | 0.4 | 0.3 | 0.4 | 0.4 |
| 2018/6/15 12:00 | 0.4 | 0.4 | 0.3 | 0.4 | 0.4 |
| 2018/6/22 12:00 | 0.4 | 0.5 | 0.3 | 0.5 | 0.4 |
| 2018/6/29 12:00 | 0.4 | 0.5 | 0.3 | 0.5 | 0.4 |
| 2018/7/6 12:00 | 0.4 | 0.5 | 0.3 | 0.6 | 0.4 |
| 2018/7/13 12:00 | 0.5 | 0.6 | 0.3 | 0.6 | 0.4 |
| 2018/7/20 12:00 | 0.5 | 0.6 | 0.4 | 0.6 | 0.4 |
| 2018/7/27 12:00 | 0.5 | 0.6 | 0.4 | 0.6 | 0.5 |

[地下水位]

| 事業区域名 計測地点名 | 7・12丁目(民地部) | | 12丁目(民地部) | | | |
|-----------------------|-----------------|---------------|-----------------|---------------|-----------------|---------------|
| | 12F_1 | | 12F_2 | | 12F_3 | |
| 計測地点地盤高 (T.P.m) | 8.96 | | 8.78 | | 9.04 | |
| 計測日 | 地下水位 (T.P.m) | 地下水位 (GLm) | 地下水位 (T.P.m) | 地下水位 (GLm) | 地下水位 (T.P.m) | 地下水位 (GLm) |
| 2017/11/25 12:00 | 7.30 | -1.664 | 7.25 | -1.531 | 7.16 | -1.878 |
| 2017/12/25 12:00 | 6.75 | -2.208 | 6.23 | -2.546 | 6.18 | -2.858 |
| 2018/1/5 12:00 | 6.73 | -2.233 | 6.27 | -2.508 | 6.24 | -2.800 |
| 2018/1/12 12:00 | 6.71 | -2.248 | 6.31 | -2.467 | 6.27 | -2.773 |
| 2018/1/19 12:00 | 6.70 | -2.258 | 6.31 | -2.469 | 6.29 | -2.754 |
| 2018/1/26 12:00 | 6.73 | -2.231 | 6.35 | -2.430 | 6.32 | -2.716 |
| 2018/2/2 12:00 | 6.72 | -2.240 | 6.38 | -2.402 | 6.35 | -2.685 |
| 2018/2/9 12:00 | 6.72 | -2.236 | 6.42 | -2.362 | 6.39 | -2.646 |
| 2018/2/16 12:00 | 6.73 | -2.232 | 6.46 | -2.318 | 6.42 | -2.621 |
| 2018/2/23 12:00 | 6.69 | -2.270 | 6.46 | -2.322 | 6.44 | -2.603 |
| 2018/3/2 12:00 | 6.70 | -2.259 | 6.48 | -2.299 | 6.47 | -2.570 |
| 2018/3/9 12:00 | 8.77 | -0.187 | 8.49 | -0.288 | 6.54 | -2.503 |
| 2018/3/16 12:00 | 7.19 | -1.772 | 6.76 | -2.024 | 6.76 | -2.283 |
| 2018/3/23 12:00 | 8.57 | -0.386 | 7.15 | -1.634 | 6.86 | -2.176 |
| 2018/3/30 12:00 | 7.18 | -1.779 | 6.82 | -1.964 | 6.79 | -2.251 |
| 2018/4/6 12:00 | 7.19 | -1.770 | 6.91 | -1.874 | 6.89 | -2.154 |
| 2018/4/13 12:00 | 7.13 | -1.834 | 6.76 | -2.019 | 6.76 | -2.279 |
| 2018/4/20 12:00 | 7.14 | -1.817 | 6.69 | -2.093 | 6.68 | -2.363 |
| 2018/4/27 12:00 | 7.26 | -1.697 | 6.70 | -2.082 | 6.68 | -2.357 |
| 2018/5/4 12:00 | 7.20 | -1.763 | 6.68 | -2.096 | 6.67 | -2.365 |
| 2018/5/11 12:00 | 7.30 | -1.655 | 6.70 | -2.083 | 6.69 | -2.352 |
| 2018/5/18 12:00 | 7.30 | -1.665 | 6.70 | -2.077 | 6.69 | -2.349 |
| 2018/5/25 12:00 | 7.16 | -1.799 | 6.69 | -2.089 | 6.68 | -2.363 |
| 2018/6/1 12:00 | 6.90 | -2.057 | 6.29 | -2.495 | 6.29 | -2.752 |
| 2018/6/8 12:00 | 6.96 | -1.997 | 6.31 | -2.467 | 6.30 | -2.745 |
| 2018/6/15 12:00 | 6.79 | -2.166 | 6.22 | -2.562 | 6.21 | -2.834 |
| 2018/6/22 12:00 | 6.81 | -2.154 | 6.18 | -2.596 | 6.14 | -2.901 |
| 2018/6/29 12:00 | 6.79 | -2.173 | 6.15 | -2.635 | 6.13 | -2.913 |
| 2018/7/6 12:00 | 6.79 | -2.175 | 6.14 | -2.642 | 6.12 | -2.918 |
| 2018/7/13 12:00 | 6.80 | -2.157 | 6.15 | -2.630 | 6.12 | -2.921 |
| 2018/7/20 12:00 | 6.82 | -2.142 | 6.17 | -2.610 | 6.12 | -2.925 |
| 2018/7/27 12:00 | 6.83 | -2.129 | 6.13 | -2.652 | 6.12 | -2.924 |
| 1段階目水位 2018/2/24まで | 7.07 | -1.890 | 6.20 | -2.580 | 6.20 | -2.840 |
| 2段階目水位 2018/5/24まで | 6.86 | -2.100 | 6.12 | -2.660 | 6.12 | -2.920 |
| 最終水位 2018/8/24まで | 6.65 | -2.320 | 6.04 | -2.740 | 6.04 | -3.000 |

[地下水位]

| 事業区域名 計測地点名 計測地点地盤高 (T.P.m) | 7・12丁目(道路部) | | | | | | | | 12丁目(| | | |
|--------------------------------------|-----------------|---------------|-----------------|---------------|-----------------|---------------|-----------------|---------------|-----------------|---------------|-----------------|---------------|
| | 12E_1 | | 12E_2 | | 12E_3 | | 12E_4 | | 12E_5 | | 12E_6 | |
| 計測日 | 8.66 | | 8.55 | | 8.50 | | 8.35 | | 8.41 | | 8.50 | |
| | 地下水位 (T.P.m) | 地下水位 (GLm) | 地下水位 (T.P.m) | 地下水位 (GLm) | 地下水位 (T.P.m) | 地下水位 (GLm) | 地下水位 (T.P.m) | 地下水位 (GLm) | 地下水位 (T.P.m) | 地下水位 (GLm) | 地下水位 (T.P.m) | 地下水位 (GLm) |
| 2017/11/25 12:00 | 7.26 | -1.399 | 7.29 | -1.263 | 7.13 | -1.373 | 7.19 | -1.156 | 7.20 | -1.212 | 7.20 | -1.303 |
| 2017/12/25 12:00 | 6.69 | -1.971 | 6.71 | -1.836 | 6.16 | -2.345 | 6.23 | -2.118 | 6.21 | -2.198 | 6.25 | -2.255 |
| 2018/1/5 12:00 | 6.70 | -1.964 | 6.72 | -1.828 | 6.21 | -2.295 | 6.28 | -2.069 | 6.26 | -2.149 | 6.30 | -2.200 |
| 2018/1/12 12:00 | 6.69 | -1.973 | 6.72 | -1.835 | 6.23 | -2.270 | 6.31 | -2.045 | 6.28 | -2.127 | 6.32 | -2.176 |
| 2018/1/19 12:00 | 6.66 | -1.998 | 6.69 | -1.861 | 6.25 | -2.250 | 6.33 | -2.023 | 6.31 | -2.104 | 6.35 | -2.152 |
| 2018/1/26 12:00 | 6.72 | -1.944 | 6.74 | -1.809 | 6.30 | -2.204 | 6.37 | -1.976 | 6.35 | -2.058 | 6.40 | -2.098 |
| 2018/2/2 12:00 | 6.72 | -1.942 | 6.75 | -1.800 | 6.33 | -2.173 | 6.41 | -1.944 | 6.38 | -2.026 | 6.44 | -2.063 |
| 2018/2/9 12:00 | 6.72 | -1.937 | 6.75 | -1.798 | 6.36 | -2.137 | 6.44 | -1.910 | 6.42 | -1.991 | 6.48 | -2.023 |
| 2018/2/16 12:00 | 6.70 | -1.965 | 6.73 | -1.823 | 6.38 | -2.115 | 6.46 | -1.887 | 6.44 | -1.968 | 6.50 | -1.999 |
| 2018/2/23 12:00 | 6.65 | -2.011 | 6.68 | -1.868 | 6.40 | -2.099 | 6.48 | -1.870 | 6.46 | -1.951 | 6.52 | -1.981 |
| 2018/3/2 12:00 | 6.73 | -1.934 | 6.76 | -1.791 | 6.45 | -2.054 | 6.52 | -1.825 | 6.50 | -1.906 | 6.57 | -1.935 |
| 2018/3/9 12:00 | 7.08 | -1.577 | 7.11 | -1.438 | 6.57 | -1.934 | 6.65 | -1.704 | 6.63 | -1.785 | 6.68 | -1.815 |
| 2018/3/16 12:00 | 7.21 | -1.447 | 7.25 | -1.302 | 6.70 | -1.795 | 6.78 | -1.568 | 6.76 | -1.647 | 6.82 | -1.677 |
| 2018/3/23 12:00 | 7.38 | -1.278 | 7.42 | -1.134 | 6.84 | -1.656 | 6.92 | -1.427 | 6.90 | -1.510 | 6.96 | -1.540 |
| 2018/3/30 12:00 | 7.21 | -1.453 | 7.24 | -1.309 | 6.73 | -1.773 | 6.80 | -1.549 | 6.78 | -1.629 | 6.84 | -1.659 |
| 2018/4/6 12:00 | 7.19 | -1.468 | 7.23 | -1.324 | 6.84 | -1.658 | 6.91 | -1.436 | 6.89 | -1.516 | 6.95 | -1.547 |
| 2018/4/13 12:00 | 7.15 | -1.513 | 7.18 | -1.368 | 6.62 | -1.880 | 6.70 | -1.652 | 6.68 | -1.730 | 6.74 | -1.764 |
| 2018/4/20 12:00 | 7.16 | -1.504 | 7.19 | -1.358 | 6.62 | -1.881 | 6.69 | -1.663 | 6.67 | -1.740 | 6.72 | -1.778 |
| 2018/4/27 12:00 | 7.25 | -1.410 | 7.29 | -1.264 | 6.61 | -1.891 | 6.68 | -1.667 | 6.67 | -1.741 | 6.72 | -1.783 |
| 2018/5/4 12:00 | 7.20 | -1.464 | 7.23 | -1.315 | 6.61 | -1.895 | 6.68 | -1.671 | 6.67 | -1.745 | 6.71 | -1.789 |
| 2018/5/11 12:00 | 7.28 | -1.382 | 7.32 | -1.231 | 6.62 | -1.883 | 6.68 | -1.669 | 6.67 | -1.739 | 6.71 | -1.790 |
| 2018/5/18 12:00 | 7.26 | -1.401 | 7.30 | -1.251 | 6.62 | -1.880 | 6.68 | -1.671 | 6.67 | -1.738 | 6.71 | -1.794 |
| 2018/5/25 12:00 | 7.14 | -1.524 | 7.18 | -1.372 | 6.60 | -1.898 | 6.66 | -1.689 | 6.66 | -1.754 | 6.69 | -1.813 |
| 2018/6/1 12:00 | 6.86 | -1.803 | 6.90 | -1.650 | 6.16 | -2.344 | 6.21 | -2.139 | 6.21 | -2.199 | 6.24 | -2.264 |
| 2018/6/8 12:00 | 6.90 | -1.758 | 6.95 | -1.603 | 6.19 | -2.307 | 6.25 | -2.104 | 6.25 | -2.162 | 6.27 | -2.232 |
| 2018/6/15 12:00 | 6.71 | -1.948 | 6.75 | -1.795 | 6.05 | -2.454 | 6.10 | -2.250 | 6.11 | -2.302 | 6.12 | -2.378 |
| 2018/6/22 12:00 | 6.70 | -1.962 | 6.74 | -1.806 | 6.04 | -2.462 | 6.09 | -2.263 | 6.10 | -2.312 | 6.11 | -2.392 |
| 2018/6/29 12:00 | 6.70 | -1.956 | 6.75 | -1.797 | 6.03 | -2.469 | 6.08 | -2.267 | 6.10 | -2.313 | 6.10 | -2.395 |
| 2018/7/6 12:00 | 6.70 | -1.958 | 6.75 | -1.799 | 6.04 | -2.464 | 6.08 | -2.266 | 6.10 | -2.308 | 6.10 | -2.395 |
| 2018/7/13 12:00 | 6.69 | -1.966 | 6.74 | -1.807 | 6.01 | -2.492 | 6.08 | -2.272 | 6.10 | -2.308 | 6.10 | -2.402 |
| 2018/7/20 12:00 | 6.68 | -1.979 | 6.73 | -1.818 | 6.01 | -2.490 | 6.07 | -2.277 | 6.10 | -2.308 | 6.09 | -2.409 |
| 2018/7/27 12:00 | 6.68 | -1.983 | 6.73 | -1.822 | 6.04 | -2.461 | 6.07 | -2.285 | 6.10 | -2.313 | 6.08 | -2.419 |

[地下水位]

| 事業区域名 | 道路部) | | | | | | | |
|--------------------|-----------------|---------------|-----------------|---------------|-----------------|---------------|-----------------|---------------|
| 計測地点名 | 12E_7 | | 12E_8 | | 12E_9 | | 12E_10 | |
| 計測地点地盤高 (T.P.m) | 8.58 | | 8.72 | | 8.65 | | 8.51 | |
| 計測日 | 地下水位 (T.P.m) | 地下水位 (GLm) | 地下水位 (T.P.m) | 地下水位 (GLm) | 地下水位 (T.P.m) | 地下水位 (GLm) | 地下水位 (T.P.m) | 地下水位 (GLm) |
| 2017/11/25 12:00 | 7.22 | -1.357 | 7.14 | -1.584 | 7.16 | -1.493 | 7.20 | -1.310 |
| 2017/12/25 12:00 | 6.26 | -2.315 | 6.17 | -2.551 | 6.19 | -2.464 | 6.24 | -2.273 |
| 2018/1/5 12:00 | 6.31 | -2.265 | 6.22 | -2.501 | 6.24 | -2.413 | 6.29 | -2.222 |
| 2018/1/12 12:00 | 6.34 | -2.240 | 6.24 | -2.477 | 6.26 | -2.390 | 6.31 | -2.197 |
| 2018/1/19 12:00 | 6.36 | -2.217 | 6.27 | -2.455 | 6.28 | -2.368 | 6.33 | -2.177 |
| 2018/1/26 12:00 | 6.41 | -2.170 | 6.31 | -2.411 | 6.33 | -2.322 | 6.38 | -2.132 |
| 2018/2/2 12:00 | 6.44 | -2.139 | 6.34 | -2.381 | 6.36 | -2.291 | 6.41 | -2.101 |
| 2018/2/9 12:00 | 6.48 | -2.104 | 6.37 | -2.347 | 6.39 | -2.259 | 6.44 | -2.067 |
| 2018/2/16 12:00 | 6.50 | -2.080 | 6.40 | -2.324 | 6.41 | -2.238 | 6.47 | -2.044 |
| 2018/2/23 12:00 | 6.52 | -2.063 | 6.41 | -2.308 | 6.43 | -2.220 | 6.48 | -2.028 |
| 2018/3/2 12:00 | 6.56 | -2.015 | 6.46 | -2.263 | 6.47 | -2.180 | 6.53 | -1.983 |
| 2018/3/9 12:00 | 6.68 | -1.896 | 6.57 | -2.146 | 6.59 | -2.062 | 6.64 | -1.865 |
| 2018/3/16 12:00 | 6.82 | -1.758 | 6.71 | -2.008 | 6.73 | -1.922 | 6.78 | -1.725 |
| 2018/3/23 12:00 | 6.96 | -1.618 | 6.85 | -1.869 | 6.87 | -1.784 | 6.92 | -1.587 |
| 2018/3/30 12:00 | 6.84 | -1.738 | 6.73 | -1.988 | 6.75 | -1.904 | 6.80 | -1.706 |
| 2018/4/6 12:00 | 6.96 | -1.622 | 6.85 | -1.873 | 6.86 | -1.789 | 6.92 | -1.592 |
| 2018/4/13 12:00 | 6.74 | -1.836 | 6.63 | -2.090 | 6.65 | -2.003 | 6.70 | -1.805 |
| 2018/4/20 12:00 | 6.73 | -1.847 | 6.62 | -2.097 | 6.64 | -2.012 | 6.70 | -1.814 |
| 2018/4/27 12:00 | 6.73 | -1.850 | 6.62 | -2.100 | 6.63 | -2.015 | 6.69 | -1.818 |
| 2018/5/4 12:00 | 6.73 | -1.852 | 6.61 | -2.105 | 6.63 | -2.019 | 6.69 | -1.822 |
| 2018/5/11 12:00 | 6.73 | -1.848 | 6.62 | -2.100 | 6.64 | -2.013 | 6.69 | -1.817 |
| 2018/5/18 12:00 | 6.73 | -1.847 | 6.62 | -2.100 | 6.64 | -2.014 | 6.69 | -1.820 |
| 2018/5/25 12:00 | 6.72 | -1.863 | 6.60 | -2.118 | 6.62 | -2.032 | 6.67 | -1.836 |
| 2018/6/1 12:00 | 6.27 | -2.307 | 6.16 | -2.564 | 6.17 | -2.478 | 6.23 | -2.282 |
| 2018/6/8 12:00 | 6.31 | -2.269 | 6.19 | -2.528 | 6.21 | -2.441 | 6.26 | -2.247 |
| 2018/6/15 12:00 | 6.17 | -2.410 | 6.05 | -2.672 | 6.07 | -2.584 | 6.12 | -2.387 |
| 2018/6/22 12:00 | 6.16 | -2.420 | 6.04 | -2.681 | 6.06 | -2.595 | 6.11 | -2.397 |
| 2018/6/29 12:00 | 6.16 | -2.421 | 6.04 | -2.683 | 6.05 | -2.598 | 6.11 | -2.401 |
| 2018/7/6 12:00 | 6.16 | -2.415 | 6.04 | -2.681 | 6.06 | -2.595 | 6.12 | -2.394 |
| 2018/7/13 12:00 | 6.16 | -2.415 | 6.03 | -2.685 | 6.05 | -2.597 | 6.11 | -2.397 |
| 2018/7/20 12:00 | 6.17 | -2.415 | 6.03 | -2.688 | 6.05 | -2.599 | 6.12 | -2.395 |
| 2018/7/27 12:00 | 6.16 | -2.418 | 6.03 | -2.695 | 6.05 | -2.604 | 6.11 | -2.396 |

[沈下量]

| 事業区域名 計測地点名 | 7・12丁目(民地部) | | 12丁目(民地部) | |
|------------------|-------------|-------------|-------------|-------------|
| | 12F_1 | 12F_2 | 12F_2 | 12F_3 |
| 計測日 | 沈下量 (cm) | 沈下量 (cm) | 沈下量 (cm) | 沈下量 (cm) |
| 2017/11/25 12:00 | 0.0 | 0.0 | 0.0 | 0.0 |
| 2017/12/25 12:00 | 0.1 | 0.2 | 0.2 | 0.1 |
| 2018/1/5 12:00 | 0.2 | 0.3 | 0.3 | 0.1 |
| 2018/1/12 12:00 | 0.2 | 0.3 | 0.3 | 0.1 |
| 2018/1/19 12:00 | 0.3 | 0.4 | 0.4 | 0.2 |
| 2018/1/26 12:00 | 0.3 | 0.4 | 0.4 | 0.2 |
| 2018/2/2 12:00 | 0.3 | 0.4 | 0.4 | 0.2 |
| 2018/2/9 12:00 | 0.3 | 0.4 | 0.4 | 0.2 |
| 2018/2/16 12:00 | 0.4 | 0.4 | 0.4 | 0.2 |
| 2018/2/23 12:00 | 0.4 | 0.5 | 0.5 | 0.3 |
| 2018/3/2 12:00 | 0.4 | 0.5 | 0.5 | 0.3 |
| 2018/3/9 12:00 | 0.4 | 0.5 | 0.5 | 0.3 |
| 2018/3/16 12:00 | 0.4 | 0.5 | 0.5 | 0.3 |
| 2018/3/23 12:00 | 0.4 | 0.5 | 0.5 | 0.3 |
| 2018/3/30 12:00 | 0.4 | 0.5 | 0.5 | 0.3 |
| 2018/4/6 12:00 | 0.4 | 0.5 | 0.5 | 0.3 |
| 2018/4/13 12:00 | 0.4 | 0.5 | 0.5 | 0.3 |
| 2018/4/20 12:00 | 0.4 | 0.5 | 0.5 | 0.3 |
| 2018/4/27 12:00 | 0.4 | 0.5 | 0.5 | 0.2 |
| 2018/5/4 12:00 | 0.4 | 0.5 | 0.5 | 0.2 |
| 2018/5/11 12:00 | 0.4 | 0.5 | 0.5 | 0.2 |
| 2018/5/18 12:00 | 0.4 | 0.5 | 0.5 | 0.2 |
| 2018/5/25 12:00 | 0.4 | 0.5 | 0.5 | 0.2 |
| 2018/6/1 12:00 | 0.5 | 0.5 | 0.5 | 0.2 |
| 2018/6/8 12:00 | 0.5 | 0.5 | 0.5 | 0.2 |
| 2018/6/15 12:00 | 0.5 | 0.6 | 0.6 | 0.2 |
| 2018/6/22 12:00 | 0.5 | 0.6 | 0.6 | 0.2 |
| 2018/6/29 12:00 | 0.6 | 0.6 | 0.6 | 0.2 |
| 2018/7/6 12:00 | 0.6 | 0.6 | 0.6 | 0.2 |
| 2018/7/13 12:00 | 0.6 | 0.6 | 0.6 | 0.2 |
| 2018/7/20 12:00 | 0.6 | 0.6 | 0.6 | 0.2 |
| 2018/7/27 12:00 | 0.7 | 0.7 | 0.7 | 0.2 |

[沈下量]

| 事業区域名 計測地点名 | 7・12丁目(道路部) | | | | | 12丁目(道路部) | | | | | |
|------------------|-------------|-------------|-------------|-------------|-------------|-------------|-------------|-------------|-------------|-------------|-------------|
| | 12E_1 | 12E_2 | 12E_3 | 12E_4 | 12E_5 | 12E_6 | 12E_7 | 12E_8 | 12E_9 | 12E_10 | 12D_1(ポンプ部) |
| 計測日 | 沈下量 (cm) | 沈下量 (cm) | 沈下量 (cm) | 沈下量 (cm) | 沈下量 (cm) | 沈下量 (cm) | 沈下量 (cm) | 沈下量 (cm) | 沈下量 (cm) | 沈下量 (cm) | 沈下量 (cm) |
| 2017/11/25 12:00 | 0.0 | 0.0 | 0.0 | 0.0 | 0.0 | 0.0 | 0.0 | 0.0 | 0.0 | 0.0 | 0.0 |
| 2017/12/25 12:00 | 0.1 | 0.1 | 0.1 | 0.2 | 0.2 | 0.2 | 0.3 | 0.1 | 0.2 | 0.2 | 0.1 |
| 2018/1/5 12:00 | 0.2 | 0.2 | 0.2 | 0.2 | 0.3 | 0.3 | 0.3 | 0.1 | 0.2 | 0.3 | 0.2 |
| 2018/1/12 12:00 | 0.2 | 0.2 | 0.2 | 0.3 | 0.3 | 0.3 | 0.4 | 0.1 | 0.3 | 0.3 | 0.2 |
| 2018/1/19 12:00 | 0.2 | 0.2 | 0.3 | 0.3 | 0.3 | 0.4 | 0.4 | 0.2 | 0.3 | 0.4 | 0.2 |
| 2018/1/26 12:00 | 0.2 | 0.2 | 0.3 | 0.3 | 0.4 | 0.4 | 0.4 | 0.2 | 0.3 | 0.4 | 0.2 |
| 2018/2/2 12:00 | 0.3 | 0.3 | 0.3 | 0.4 | 0.4 | 0.5 | 0.5 | 0.2 | 0.3 | 0.5 | 0.2 |
| 2018/2/9 12:00 | 0.3 | 0.3 | 0.3 | 0.4 | 0.4 | 0.5 | 0.5 | 0.2 | 0.4 | 0.5 | 0.3 |
| 2018/2/16 12:00 | 0.3 | 0.3 | 0.3 | 0.4 | 0.4 | 0.5 | 0.5 | 0.2 | 0.4 | 0.5 | 0.3 |
| 2018/2/23 12:00 | 0.3 | 0.3 | 0.4 | 0.4 | 0.4 | 0.6 | 0.5 | 0.2 | 0.4 | 0.5 | 0.3 |
| 2018/3/2 12:00 | 0.3 | 0.3 | 0.4 | 0.4 | 0.5 | 0.6 | 0.5 | 0.2 | 0.4 | 0.5 | 0.3 |
| 2018/3/9 12:00 | 0.4 | 0.4 | 0.4 | 0.4 | 0.5 | 0.6 | 0.5 | 0.3 | 0.4 | 0.5 | 0.4 |
| 2018/3/16 12:00 | 0.4 | 0.4 | 0.7 | 0.4 | 0.5 | 0.6 | 0.5 | 0.3 | 0.3 | 0.4 | 0.5 |
| 2018/3/23 12:00 | 0.3 | 0.3 | 0.7 | 0.4 | 0.5 | 0.6 | 0.5 | 0.3 | 0.3 | 0.4 | 0.5 |
| 2018/3/30 12:00 | 0.3 | 0.4 | 0.7 | 0.4 | 0.5 | 0.6 | 0.5 | 0.3 | 0.3 | 0.4 | 0.5 |
| 2018/4/6 12:00 | 0.3 | 0.3 | 0.7 | 0.4 | 0.5 | 0.6 | 0.5 | 0.2 | 0.3 | 0.4 | 0.5 |
| 2018/4/13 12:00 | 0.4 | 0.4 | 0.7 | 0.4 | 0.5 | 0.6 | 0.5 | 0.3 | 0.4 | 0.5 | 0.5 |
| 2018/4/20 12:00 | 0.4 | 0.4 | 0.7 | 0.4 | 0.5 | 0.6 | 0.5 | 0.3 | 0.4 | 0.5 | 0.5 |
| 2018/4/27 12:00 | 0.4 | 0.4 | 0.7 | 0.5 | 0.5 | 0.6 | 0.5 | 0.3 | 0.4 | 0.4 | 0.6 |
| 2018/5/4 12:00 | 0.4 | 0.4 | 0.7 | 0.5 | 0.5 | 0.7 | 0.5 | 0.3 | 0.4 | 0.4 | 0.6 |
| 2018/5/11 12:00 | 0.4 | 0.4 | 0.8 | 0.5 | 0.5 | 0.7 | 0.5 | 0.3 | 0.3 | 0.4 | 0.6 |
| 2018/5/18 12:00 | 0.4 | 0.4 | 0.8 | 0.5 | 0.5 | 0.7 | 0.5 | 0.3 | 0.3 | 0.4 | 0.6 |
| 2018/5/25 12:00 | 0.4 | 0.4 | 0.8 | 0.5 | 0.5 | 0.7 | 0.5 | 0.3 | 0.3 | 0.4 | 0.6 |
| 2018/6/1 12:00 | 0.4 | 0.4 | 0.8 | 0.5 | 0.6 | 0.7 | 0.6 | 0.3 | 0.3 | 0.4 | 0.6 |
| 2018/6/8 12:00 | 0.5 | 0.4 | 0.8 | 0.6 | 0.6 | 0.8 | 0.6 | 0.3 | 0.3 | 0.4 | 0.6 |
| 2018/6/15 12:00 | 0.5 | 0.4 | 0.8 | 0.6 | 0.6 | 0.8 | 0.6 | 0.3 | 0.4 | 0.4 | 0.6 |
| 2018/6/22 12:00 | 0.5 | 0.5 | 0.8 | 0.6 | 0.6 | 0.8 | 0.6 | 0.3 | 0.4 | 0.5 | 0.6 |
| 2018/6/29 12:00 | 0.5 | 0.5 | 0.8 | 0.6 | 0.7 | 0.9 | 0.6 | 0.3 | 0.4 | 0.5 | 0.7 |
| 2018/7/6 12:00 | 0.5 | 0.5 | 0.8 | 0.7 | 0.7 | 0.9 | 0.7 | 0.3 | 0.4 | 0.5 | 0.7 |
| 2018/7/13 12:00 | 0.6 | 0.5 | 0.9 | 0.7 | 0.7 | 1.0 | 0.7 | 0.3 | 0.4 | 0.5 | 0.7 |
| 2018/7/20 12:00 | 0.6 | 0.5 | 0.9 | 0.8 | 0.8 | 1.0 | 0.7 | 0.4 | 0.5 | 0.6 | 0.7 |
| 2018/7/27 12:00 | 0.6 | 0.6 | 0.9 | 0.8 | 0.8 | 1.0 | 0.7 | 0.4 | 0.5 | 0.6 | 0.8 |

[地下水位]

| 事業区域名 計測地点名 | 対策範囲外 | | | | | | | | | | | |
|--------------------|-----------------|---------------|-----------------|---------------|-----------------|---------------|-----------------|---------------|-----------------|---------------|-----------------|---------------|
| | 4B_1 | | 5W_1 | | 8W_2 | | 9B_1 | | 10B_1 | | 11B_1 | |
| 計測地点地盤高 (T.P.m) | 9.16 | | 9.26 | | 9.14 | | 8.73 | | 9.28 | | 8.65 | |
| 計測日 | 地下水位 (T.P.m) | 地下水位 (GLm) | 地下水位 (T.P.m) | 地下水位 (GLm) | 地下水位 (T.P.m) | 地下水位 (GLm) | 地下水位 (T.P.m) | 地下水位 (GLm) | 地下水位 (T.P.m) | 地下水位 (GLm) | 地下水位 (T.P.m) | 地下水位 (GLm) |
| 2017/11/25 12:00 | 8.22 | -0.936 | 8.67 | -0.589 | 8.61 | -0.527 | 7.67 | -1.061 | 7.29 | -1.992 | 6.99 | -1.662 |
| 2017/12/25 12:00 | 7.91 | -1.255 | 8.51 | -0.750 | 8.37 | -0.768 | 7.23 | -1.501 | 7.08 | -2.198 | 6.73 | -1.918 |
| 2018/1/5 12:00 | 7.78 | -1.377 | 8.38 | -0.878 | 8.31 | -0.828 | 7.08 | -1.655 | 6.98 | -2.299 | 6.60 | -2.055 |
| 2018/1/12 12:00 | 7.73 | -1.428 | 8.35 | -0.908 | 8.28 | -0.863 | 6.99 | -1.735 | 6.95 | -2.334 | 6.54 | -2.115 |
| 2018/1/19 12:00 | 7.70 | -1.464 | 8.39 | -0.870 | 8.25 | -0.893 | 6.96 | -1.767 | 6.94 | -2.339 | 6.52 | -2.134 |
| 2018/1/26 12:00 | 7.82 | -1.339 | 8.56 | -0.698 | 8.24 | -0.904 | 7.23 | -1.500 | 7.09 | -2.186 | 6.75 | -1.900 |
| 2018/2/2 12:00 | 7.86 | -1.300 | 8.73 | -0.535 | 8.30 | -0.840 | 7.25 | -1.476 | 7.05 | -2.232 | 6.68 | -1.970 |
| 2018/2/9 12:00 | 7.78 | -1.384 | 8.61 | -0.649 | 8.37 | -0.767 | 7.28 | -1.447 | 7.06 | -2.221 | 6.85 | -1.803 |
| 2018/2/16 12:00 | 7.74 | -1.420 | 8.53 | -0.727 | 8.33 | -0.810 | 7.19 | -1.538 | 7.00 | -2.276 | 6.81 | -1.841 |
| 2018/2/23 12:00 | 7.69 | -1.471 | 8.47 | -0.794 | 8.28 | -0.863 | 7.06 | -1.666 | 6.94 | -2.341 | 6.73 | -1.925 |
| 2018/3/2 12:00 | 7.82 | -1.340 | 8.75 | -0.515 | 8.46 | -0.676 | 7.35 | -1.383 | 7.09 | -2.190 | 7.07 | -1.582 |
| 2018/3/9 12:00 | 8.22 | -0.944 | 8.94 | -0.319 | 9.09 | -0.047 | 8.28 | -0.447 | 7.25 | -2.034 | 7.59 | -1.057 |
| 2018/3/16 12:00 | 8.24 | -0.919 | 8.68 | -0.581 | 8.84 | -0.302 | 7.91 | -0.822 | 7.36 | -1.916 | 7.29 | -1.365 |
| 2018/3/23 12:00 | 8.40 | -0.757 | 8.76 | -0.496 | 8.99 | -0.154 | 8.24 | -0.491 | 7.45 | -1.828 | 7.41 | -1.242 |
| 2018/3/30 12:00 | 8.26 | -0.898 | 8.62 | -0.637 | 8.70 | -0.437 | 7.88 | -0.852 | 7.34 | -1.943 | 7.17 | -1.485 |
| 2018/4/6 12:00 | 8.18 | -0.977 | 8.50 | -0.762 | 8.52 | -0.623 | 7.72 | -1.008 | 7.28 | -2.004 | 7.13 | -1.517 |
| 2018/4/13 12:00 | 8.06 | -1.095 | 8.35 | -0.906 | 8.38 | -0.764 | 7.55 | -1.181 | 7.16 | -2.120 | 7.02 | -1.628 |
| 2018/4/20 12:00 | 8.06 | -1.095 | 8.44 | -0.818 | 8.30 | -0.835 | 7.55 | -1.179 | 7.23 | -2.048 | 7.04 | -1.614 |
| 2018/4/27 12:00 | 8.27 | -0.893 | 8.72 | -0.536 | 8.41 | -0.734 | 7.83 | -0.903 | 7.38 | -1.905 | 7.35 | -1.300 |
| 2018/5/4 12:00 | 8.26 | -0.904 | 8.61 | -0.651 | 8.28 | -0.856 | 7.72 | -1.013 | 7.38 | -1.895 | 7.22 | -1.434 |
| 2018/5/11 12:00 | 8.40 | -0.763 | 8.73 | -0.525 | 8.40 | -0.744 | 7.96 | -0.772 | 7.40 | -1.876 | 7.34 | -1.311 |
| 2018/5/18 12:00 | 8.40 | -0.762 | 8.61 | -0.650 | 8.41 | -0.732 | 7.88 | -0.851 | 7.45 | -1.830 | 7.23 | -1.424 |
| 2018/5/25 12:00 | 8.33 | -0.828 | 8.49 | -0.766 | 8.30 | -0.843 | 7.78 | -0.948 | 7.42 | -1.862 | 7.18 | -1.469 |
| 2018/6/1 12:00 | 8.34 | -0.824 | 8.62 | -0.638 | 8.22 | -0.916 | 7.76 | -0.969 | 7.41 | -1.875 | 7.27 | -1.385 |
| 2018/6/8 12:00 | 8.28 | -0.879 | 8.48 | -0.780 | 8.16 | -0.977 | 7.62 | -1.114 | 7.36 | -1.923 | 7.18 | -1.473 |
| 2018/6/15 12:00 | 8.31 | -0.851 | 8.64 | -0.622 | 8.14 | -0.997 | 7.75 | -0.979 | 7.36 | -1.916 | 7.23 | -1.419 |
| 2018/6/22 12:00 | 8.35 | -0.806 | 8.73 | -0.528 | 8.29 | -0.848 | 7.92 | -0.808 | 7.41 | -1.872 | 7.29 | -1.359 |
| 2018/6/29 12:00 | 8.25 | -0.911 | 8.53 | -0.726 | 8.26 | -0.881 | 7.74 | -0.993 | 7.34 | -1.937 | 7.17 | -1.478 |
| 2018/7/6 12:00 | 8.25 | -0.911 | 8.43 | -0.830 | 8.18 | -0.959 | 7.67 | -1.062 | 7.33 | -1.948 | 7.13 | -1.522 |
| 2018/7/13 12:00 | 8.22 | -0.938 | 8.41 | -0.849 | 8.12 | -1.017 | 7.67 | -1.064 | 7.35 | -1.926 | 7.19 | -1.465 |
| 2018/7/20 12:00 | 8.14 | -1.021 | 8.18 | -1.081 | 8.05 | -1.086 | 7.46 | -1.266 | 7.32 | -1.957 | 7.10 | -1.550 |
| 2018/7/27 12:00 | 8.08 | -1.083 | 8.03 | -1.230 | 7.98 | -1.156 | 7.34 | -1.391 | 7.32 | -1.959 | 7.04 | -1.607 |

[地下水位]

| 事業区域名 | 11B_2 | | 12W_6 | | 12W_8 | |
|--------------------|-----------------|---------------|-----------------|---------------|-----------------|---------------|
| 計測地点名 | | | | | | |
| 計測地点地盤高 (T.P.m) | 8.38 | | 8.71 | | 8.43 | |
| 計測日 | 地下水位 (T.P.m) | 地下水位 (GLm) | 地下水位 (T.P.m) | 地下水位 (GLm) | 地下水位 (T.P.m) | 地下水位 (GLm) |
| 2017/11/25 12:00 | 6.13 | -2.250 | 7.61 | -1.105 | 7.12 | -1.310 |
| 2017/12/25 12:00 | 6.08 | -2.300 | 7.32 | -1.394 | 6.88 | -1.549 |
| 2018/1/5 12:00 | 6.07 | -2.308 | 7.24 | -1.468 | 6.79 | -1.638 |
| 2018/1/12 12:00 | 6.07 | -2.312 | 7.21 | -1.498 | 6.75 | -1.679 |
| 2018/1/19 12:00 | 6.07 | -2.308 | 7.18 | -1.526 | 6.75 | -1.678 |
| 2018/1/26 12:00 | 6.09 | -2.291 | 7.23 | -1.479 | 6.83 | -1.603 |
| 2018/2/2 12:00 | 6.10 | -2.281 | 7.23 | -1.479 | 6.81 | -1.621 |
| 2018/2/9 12:00 | 6.09 | -2.292 | 7.28 | -1.427 | 6.78 | -1.649 |
| 2018/2/16 12:00 | 6.08 | -2.296 | 7.26 | -1.449 | 6.75 | -1.681 |
| 2018/2/23 12:00 | 6.09 | -2.289 | 7.22 | -1.492 | 6.73 | -1.705 |
| 2018/3/2 12:00 | 6.12 | -2.260 | 7.45 | -1.259 | 6.83 | -1.598 |
| 2018/3/9 12:00 | 6.39 | -1.985 | 8.02 | -0.692 | 7.64 | -0.789 |
| 2018/3/16 12:00 | 6.22 | -2.158 | 7.77 | -0.943 | 7.17 | -1.264 |
| 2018/3/23 12:00 | 6.33 | -2.048 | 7.89 | -0.818 | 7.38 | -1.052 |
| 2018/3/30 12:00 | 6.23 | -2.152 | 7.74 | -0.969 | 7.17 | -1.259 |
| 2018/4/6 12:00 | 6.23 | -2.150 | 7.67 | -1.039 | 7.11 | -1.319 |
| 2018/4/13 12:00 | 6.15 | -2.230 | 7.55 | -1.164 | 7.03 | -1.403 |
| 2018/4/20 12:00 | 6.19 | -2.192 | 7.52 | -1.193 | 7.02 | -1.409 |
| 2018/4/27 12:00 | 6.30 | -2.083 | 7.72 | -0.988 | 7.14 | -1.293 |
| 2018/5/4 12:00 | 6.31 | -2.068 | 7.62 | -1.093 | 7.10 | -1.334 |
| 2018/5/11 12:00 | 6.43 | -1.946 | 7.81 | -0.898 | 7.23 | -1.198 |
| 2018/5/18 12:00 | 6.35 | -2.025 | 7.78 | -0.930 | 7.19 | -1.237 |
| 2018/5/25 12:00 | 6.33 | -2.050 | 7.67 | -1.044 | 7.13 | -1.300 |
| 2018/6/1 12:00 | 6.41 | -1.974 | 7.64 | -1.066 | 7.12 | -1.310 |
| 2018/6/8 12:00 | 6.26 | -2.122 | 7.55 | -1.164 | 7.07 | -1.358 |
| 2018/6/15 12:00 | 6.28 | -2.100 | 7.55 | -1.164 | 7.11 | -1.325 |
| 2018/6/22 12:00 | 6.41 | -1.973 | 7.71 | -1.004 | 7.15 | -1.276 |
| 2018/6/29 12:00 | 6.22 | -2.164 | 7.55 | -1.162 | 7.08 | -1.353 |
| 2018/7/6 12:00 | 6.27 | -2.109 | 7.51 | -1.195 | 7.09 | -1.338 |
| 2018/7/13 12:00 | 6.23 | -2.146 | 7.44 | -1.268 | 7.03 | -1.403 |
| 2018/7/20 12:00 | 6.24 | -2.144 | 7.37 | -1.339 | 6.95 | -1.477 |
| 2018/7/27 12:00 | 6.25 | -2.129 | 7.33 | -1.382 | 6.90 | -1.528 |